



# SZABO SCANDIC

Part of Europa Biosite

## Produktinformation



Forschungsprodukte & Biochemikalien



Zellkultur & Verbrauchsmaterial



Diagnostik & molekulare Diagnostik



Laborgeräte & Service

Weitere Information auf den folgenden Seiten!  
See the following pages for more information!



### Lieferung & Zahlungsart

siehe unsere [Liefer- und Versandbedingungen](#)

### Zuschläge

- Mindermengenzuschlag
- Trockeneiszuschlag
- Gefahrgutzuschlag
- Expressversand

### SZABO-SCANDIC HandelsgmbH

Quellenstraße 110, A-1100 Wien

T. +43(0)1 489 3961-0

F. +43(0)1 489 3961-7

[mail@szabo-scandic.com](mailto:mail@szabo-scandic.com)

[www.szabo-scandic.com](http://www.szabo-scandic.com)

[linkedin.com/company/szaboscandic](https://www.linkedin.com/company/szaboscandic) 



## Myogenin. Mouse Monoclonal Antibody

Myogenin, Myogenic factor 4, Myf-4

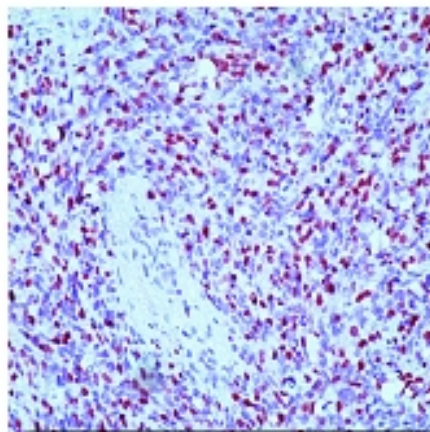
### BACKGROUND

Recognizes a protein of 34kDa, identified as myogenin. Its epitope localizes between aa 158-178 of myogenin. Myogenin is a member of a family of myogenic regulatory genes, which includes MyoD, myf5 and MRF4. These genes encode a set of transcription factors, which are essential for muscle development. Expression of myogenin is restricted to cells of skeletal muscle origin. It is therefore a useful marker for tumors of the muscle lineage, being strongly expressed in alveolar rhabdomyosarcomas. This antibody can immunoprecipitate protein-DNA complex and is the antibody of choice for staining of formalin-fixed, paraffin-embedded tissues.

### IMMUNOGEN

Hybridoma produced by the fusion of splenocytes from BALB/c mice immunized with recombinant protein containing rat myogenin amino acids 30-224 and mouse myeloma NS1 cells.

Immunohistochemical staining using myogenin antibody on formalin fixed, paraffin embedded human rhabdomyosarcoma.



### ORDERING INFORMATION

#### CATALOG NUMBER

X1415M

#### SIZE

100 µg

#### FORM

Unconjugated

#### HOST/CLONE

Mouse Clone F12B

#### FORMULATION

Provided as solution in phosphate buffered saline with 0.08% sodium azide

#### CONCENTRATION

See vial for concentration

#### ISOTYPE

IgG1

#### APPLICATIONS

ELISA, Gel Supershift, Immunohistochemistry (Paraffin Sections), Immunofluorescence, Immunoprecipitation, Western Blot

#### SPECIES REACTIVITY

Human, Mouse, Rat

#### ACCESSION NUMBER

Human	P15173
Mouse	P12979
Rat	P20428

**POSITIVE CONTROL/TISSUE EXPRESSION**

Rhabdomyosarcoma and Wlim's tumors

**COMMENTS**

This antibody can be used for ELISA, gel supershift assays, immunofluorescence, immunoprecipitation (2  $\mu$ g/mg), Western blotting (1  $\mu$ g/ml) and immunohistochemistry on formalin-fixed, paraffin-embedded tissue sections (1-2  $\mu$ g/ml). Optimal concentration should be evaluated by serial dilutions.

**PURIFICATION**

Protein A/G Chromatography

**SHIP CONDITIONS**

Ship at ambient temperature, freeze upon arrival

**STORAGE CUSTOMER**

Product should be stored at -20°C. Aliquot to avoid freeze/thaw cycles

**STABILITY**

Products are stable for one year from purchase when stored properly

**REFERENCES**

1. Wright WE, et al. Monoclonal antimyogenin antibodies define epitopes outside the bHLH domain where binding interferes with protein-protein and protein-DNA interaction. *Dev Genet* 19: 131-138 (1996).
2. Wright WE, et al. Myogenin, a factor regulating myogenesis, has a domain homologous to MyoD. *Cell* 1989; 56:607.
3. Aurade F, et al. Myf5, MyoD, myogenin and MRF4 myogenic derivatives of the embryonic mesenchymal cell line C3H10T1/2 exhibit the same adult muscle phenotype. *Differentiation* 1994; 55:185.

**PRODUCT SPECIFIC REFERENCES**