



# SZABO SCANDIC

Part of Europa Biosite

## Produktinformation



Forschungsprodukte & Biochemikalien



Zellkultur & Verbrauchsmaterial



Diagnostik & molekulare Diagnostik



Laborgeräte & Service

Weitere Information auf den folgenden Seiten!  
See the following pages for more information!



### Lieferung & Zahlungsart

siehe unsere [Liefer- und Versandbedingungen](#)

### Zuschläge

- Mindermengenzuschlag
- Trockeneiszuschlag
- Gefahrgutzuschlag
- Expressversand

### SZABO-SCANDIC HandelsgmbH

Quellenstraße 110, A-1100 Wien

T. +43(0)1 489 3961-0

F. +43(0)1 489 3961-7

[mail@szabo-scandic.com](mailto:mail@szabo-scandic.com)

[www.szabo-scandic.com](http://www.szabo-scandic.com)

[linkedin.com/company/szaboscandic](https://www.linkedin.com/company/szaboscandic) 



**TGFbeta receptor III. Sheep Polyclonal Antibody**  
Betaglycan

**BACKGROUND**

The type III transforming growth factor  $\beta$  receptor (also called betaglycan) is a cells surface heparan/chondroitin sulfate proteoglycan which binds TGF- $\beta$  via its core protein and is abundantly expressed in osteoblastic cells.

**ORDERING INFORMATION**

**CATALOG NUMBER**  
X1484P

**SIZE**  
250  $\mu$ g  
**FORM**  
Unconjugated

**HOST/CLONE**  
Sheep

**FORMULATION**  
Provided as solution in phosphate buffered saline with 0.08% sodium azide

**CONCENTRATION**  
See vial for concentration

**ISOTYPE**  
IgG

**APPLICATIONS**  
Western Blot, Immunohistochemistry

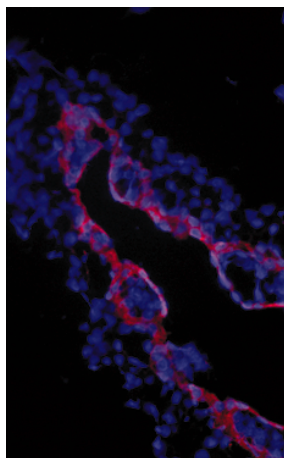
**SPECIES REACTIVITY**  
Chicken

**ACCESSION NUMBER**  
Chicken P16047

**IMMUNOGEN**

Recombinant protein derived from the extracellular domain of the chicken TGF $\beta$ III receptor protein. Protein shares significant homology with the mouse, rat and human sequences.

Immunohistochemical staining of extraembryonic membranes from stage 16 chick embryos using TGF $\beta$ III receptor antibody.



**POSITIVE CONTROL/TISSUE EXPRESSION**

Extraembryonic membranes from chick embryos

**COMMENTS**

Antibody can be used for Western blotting (5-10  $\mu\text{g/ml}$ ), immunoprecipitation (5  $\mu\text{g/mg}$  of protein lysate and immunohistochemistry on paraffin embedded tissue sections (5-10  $\mu\text{g/ml}$ ). Optimal concentration should be evaluated by serial dilutions.

**PURIFICATION**

Ammonium Sulfate Precipitation

**SHIP CONDITIONS**

Ship at ambient temperature, freeze upon arrival

**STORAGE CUSTOMER**

Product should be stored at  $-20^{\circ}\text{C}$ . Aliquot to avoid freeze/thaw cycles

**STABILITY**

Products are stable for one year from purchase when stored properly

**REFERENCES**

1. Brown, C.B., et al. 'Requirement of type III TGF- $\beta$  receptor for endocardial cell transformation in the heart.' Science 1999, 283, 2080-2082

**PRODUCT SPECIFIC REFERENCES**