



# SZABO SCANDIC

Part of Europa Biosite

## Produktinformation



Forschungsprodukte & Biochemikalien



Zellkultur & Verbrauchsmaterial



Diagnostik & molekulare Diagnostik



Laborgeräte & Service

Weitere Information auf den folgenden Seiten!  
See the following pages for more information!



### Lieferung & Zahlungsart

siehe unsere [Liefer- und Versandbedingungen](#)

### Zuschläge

- Mindermengenzuschlag
- Trockeneiszuschlag
- Gefahrgutzuschlag
- Expressversand

### SZABO-SCANDIC HandelsgmbH

Quellenstraße 110, A-1100 Wien

T. +43(0)1 489 3961-0

F. +43(0)1 489 3961-7

[mail@szabo-scandic.com](mailto:mail@szabo-scandic.com)

[www.szabo-scandic.com](http://www.szabo-scandic.com)

[linkedin.com/company/szaboscandic](https://www.linkedin.com/company/szaboscandic) 

**SH21A (SH2 DOMAIN-CONTAINING PROTEIN 1A) / (SAP). Rabbit Polyclonal Antibody**  
SAP, DSHP, SLAM ASSOCIATED PROTEIN

**BACKGROUND**

SLAM (Signaling Lymphocyte-Activation Molecule) is a glycosylated type-I transmembrane protein which is present on the surface of B and T cells. SLAM is a high-affinity self-ligand which, when triggered, co-activated B or T lymphocyte responses and is considered to be important in bi-directional T - B cell stimulation. SAP (SLAM-Associated Protein) has been determined to be a 15 kDa protein. SAP is believed to be the genetic defect which causes X-linked Lymphoproliferative Syndrome (XLP). SAP is thought to bind to SLAM by the SH2 domain of the SAP protein. Binding of SAP to the SLAM protein blocks the binding of SHP-2 to the phosphorylated SLAM protein which causes XLP.

**ORDERING INFORMATION**

**CATALOG NUMBER**

X1490P

**SIZE**

100 µg

**FORM**

Unconjugated

**HOST/CLONE**

Rabbit

**FORMULATION**

Provided as solution in phosphate buffered saline with 0.08% sodium azide

**CONCENTRATION**

See vial for concentration

**ISOTYPE**

IgG

**APPLICATIONS**

Western Blot, Immunoprecipitation

**SPECIES REACTIVITY**

Human

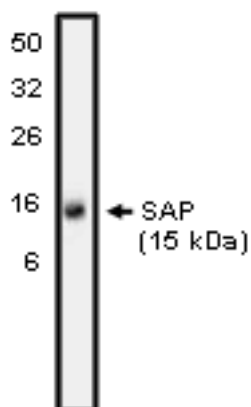
**ACCESSION NUMBER**

Human O60880

**IMMUNOGEN**

Full-length recombinant SAP protein

Western blot analysis using SAP antibody on NK-92 cell lysate at 10 µg/ml).



**POSITIVE CONTROL/TISSUE EXPRESSION**

NK-92 cell lysate

**COMMENTS**

This antibody can be used for Western blotting (5-10  $\mu$ g/ml) and immunoprecipitation. Optimal concentration should be evaluated by serial dilutions.

**PURIFICATION**

Ammonium Sulfate Precipitation

**SHIP CONDITIONS**

Ship at ambient temperature, freeze upon arrival

**STORAGE CUSTOMER**

Product should be stored at -20°C. Aliquot to avoid freeze/thaw cycles

**STABILITY**

Products are stable for one year from purchase when stored properly

**REFERENCES**

1. Sayos, J., et al. The X-linked lymphoproliferative-disease gene product SAP regulated signals induced through the co-receptor SLAM. *Nature* 1998, 395, 462-469
2. Latour, S., et al. Regulation of SLAM-mediated signal transduction by SAP, the X-linked lymphoproliferative gene product. *Nat. Immunol.* 2001, 8, 681-690.
3. Czar, M.J., et al. Altered lymphocyte responses and cytokine production in mice deficient in the X-linked lymphoproliferative disease gene SH2D1A/DSHP/SAP. *Proc. Natl. Acad. Sci USA.* 2001, 13, 7449-7454.
4. Tangye, S.G., et al. Cutting edge: human 2B4, an activating NK cell receptor, recruits the protein tyrosine phosphatase SHP-2 and the adaptor signaling protein SAP. *J. Immunol.* 1999, 162, 6981-6985.

**PRODUCT SPECIFIC REFERENCES**