



SZABO SCANDIC

Part of Europa Biosite

Produktinformation



Forschungsprodukte & Biochemikalien



Zellkultur & Verbrauchsmaterial



Diagnostik & molekulare Diagnostik



Laborgeräte & Service

Weitere Information auf den folgenden Seiten!
See the following pages for more information!



Lieferung & Zahlungsart

siehe unsere [Liefer- und Versandbedingungen](#)

Zuschläge

- Mindermengenzuschlag
- Trockeneiszuschlag
- Gefahrgutzuschlag
- Expressversand

SZABO-SCANDIC HandelsgmbH

Quellenstraße 110, A-1100 Wien

T. +43(0)1 489 3961-0

F. +43(0)1 489 3961-7

mail@szabo-scandic.com

www.szabo-scandic.com

[linkedin.com/company/szaboscandic](https://www.linkedin.com/company/szaboscandic) 

CD15-NA FITC. Mouse Single-Color Reagent

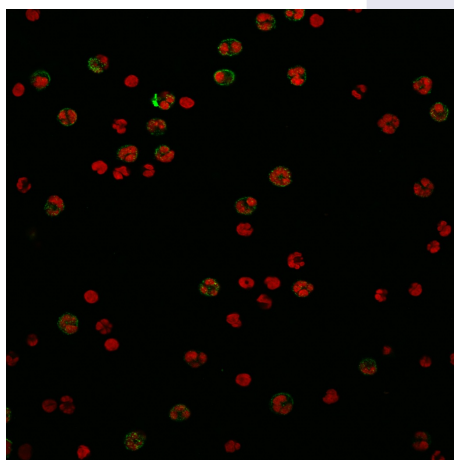
Non-Agglutinating CD15, FITC Labeled

BACKGROUND

CD15-FITC is a monoclonal antibody (MAb) labelled with fluorescein isothiocyanate (FITC) designed for use as a direct immunofluorescence reagent in the identification and enumeration of cells which express the CD15 antigen by flow cytometry. The CD15 MAb is applied for the initial evaluation of acute myeloid leukemia (AML) and myelodysplastic syndromes (MDS) together with a panel of other antibodies. Interpretation of results must be made within the context of the patient's clinical history and other diagnostic tests by a certified professional.

IMMUNOGEN

Immunofluorescence staining using CD15-FITC IgG3 antibody (Cat. No. X1496M) on human neutrophils.



ORDERING INFORMATION

CATALOG NUMBER

X1496M

SIZE

50 Tests

FORM

FITC

HOST/CLONE

Mouse Clone MCS-1

FORMULATION

Provided as 0.2 μ m sterile filtered solution in phosphate buffered saline with 0.08% sodium azide.

CONCENTRATION

Product provided titered for use in flow

ISOTYPE

IgG3

APPLICATIONS

Flow Cytometry

SPECIES REACTIVITY

Human

ACCESSION NUMBER

POSITIVE CONTROL/TISSUE EXPRESSION

COMMENTS

This CD15 antibody is an IgG3 antibody as compared to other CD15 antibodies available which are IgM's. These IgM's cause the cells labeled with them to aggregate in the cytometer and read as one cell, producing lower numbers of cells to be reported. Our CD15 antibody does not cause the cells to aggregate, yielding much more accurate results.

PURIFICATION

Affinity Chromatography

SHIP CONDITIONS

Ship at ambient temperature, do not freeze, refrigerate upon arrival

STORAGE CUSTOMER

Product should be stored at 4-8°C. DO NOT FREEZE

STABILITY

Reagents are stable for the period shown on the vial label when stored properly

REFERENCES

1. Ball ED, M5. CD15 cluster workshop report. In: Schlossman SF, Boumsell L, Gilks W, Harlan JM, Kishimoto T, Morimoto C, Ritz J, et al. editors. Leucocyte typing V. White cell differentiation antigens. Proceedings of Fifth International Workshop and conference held in Boston, USA 3-7 november, 1993. Volume One. Oxford University Press (1995).
2. Bahia DMM, Yamamoto M, Chauffaille MLF, Kimura EYS, Bordin JO, et al. Aberrant phenotypes in acute myeloid leukemia: a high frequency and clinical significance. *Haematologica*.86: 801-806 (2001)
3. van Gongen JJM, Adriaansen HJ. Immunobiology of leukemia. In Henderson ES, Lister TA, Greaves MF editors. *Leukemia*. WB Saunders Company (1996)
4. Menéndez P, et al. Comparison between a lyse-and-then-wash method and a lyse-non-wash technique for the enumeration of CD34+ hematopoietic progenitor cells. *Cytometry (Comm. Clin. Cytometry)* 34: 264-271 (1998)
5. Gratama JW, Menéndez P, Kraan J, Orfao A. Loss of CD34+ hematopoietic progenitor cells due to washing can be reduced by the use of fixative-free erythrocyte lysing reagents. *J Immunol. Methods* 239: 13-23 (2000)
6. Protection of Laboratory Workers from occupationally acquired infections. Second edition; approved guideline (2001). Villanova PA: National Committee for Clinical Laboratory Standards; Document M29-A2.
7. Procedures for the collection of diagnostic blood specimens by venipuncture- approved standard; Fifth edition (2003). Wayne PA: National Committee for Clinical Laboratory Standards; Document H3-A5.
8. Clinical applications of flow cytometry: Quality assurance and immunophenotyping of lymphocytes; approved guideline (1998). Wayne PA: National Committee for Clinical Laboratory Standards; Document H42-A.
9. Braylan RC, Orfao A, Borowitz MJ, Davis BH. Optimal number of reagents required to evaluate hematolymphoid neoplasias: results of an international consensus meeting. *Cytometry* 46: 23-7 (2001)
10. Jennings CD, Foon KA. Recent advances in flow cytometry: application to the diagnosis of hematologic malignancy. *Blood* 90(8): 2863-2892 (1997)
11. Orfao A, Ortuño F, de Santiago M, López A, San Miguel J. Immunophenotyping of acute leucemias and myelodysplastic syndromes. *Cytometry Part A* 58A: 62-71 (2004)
12. Reichert et al. Lymphocyte subset reference ranges in adult Caucasians. *Clin Immunol Immunopathol* 60:190-208 (1991)

PRODUCT SPECIFIC REFERENCES