



# SZABO SCANDIC

Part of Europa Biosite

## Produktinformation



Forschungsprodukte & Biochemikalien



Zellkultur & Verbrauchsmaterial



Diagnostik & molekulare Diagnostik



Laborgeräte & Service

Weitere Information auf den folgenden Seiten!  
See the following pages for more information!



### Lieferung & Zahlungsart

siehe unsere [Liefer- und Versandbedingungen](#)

### Zuschläge

- Mindermengenzuschlag
- Trockeneiszuschlag
- Gefahrgutzuschlag
- Expressversand

### SZABO-SCANDIC HandelsgmbH

Quellenstraße 110, A-1100 Wien

T. +43(0)1 489 3961-0

F. +43(0)1 489 3961-7

[mail@szabo-scandic.com](mailto:mail@szabo-scandic.com)

[www.szabo-scandic.com](http://www.szabo-scandic.com)

[linkedin.com/company/szaboscandic](https://www.linkedin.com/company/szaboscandic) 

## β2 Calcium Channel. Rabbit Polyclonal Antibody

### BACKGROUND

Heterologous expression studies have shown that the activity of voltage-gated Ca<sup>2+</sup> channels is regulated by their beta subunits in a beta subunit isoform-specific manner. Our data show that all four beta subunit isoforms associate with L-type Ca<sup>2+</sup> channels in mammalian brain. This beta subunit heterogeneity may play an important role for the fine tuning of L-type channel function and modulation in neurons.

### ORDERING INFORMATION

**CATALOG NUMBER**  
X1514P

**SIZE**  
100 μg  
**FORM**  
Unconjugated

**HOST/CLONE**  
Rabbit

**FORMULATION**  
Provided as solution in phosphate buffered saline with 0.08% sodium azide

**CONCENTRATION**  
See vial for concentration

**ISOTYPE**  
IgG

**APPLICATIONS**  
Western Blot

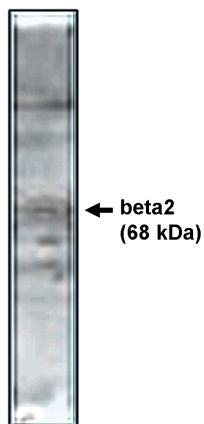
**SPECIES REACTIVITY**  
Human

**ACCESSION NUMBER**  
Human Q5VVH1

### IMMUNOGEN

Synthetic peptide derived from the rat beta2 calcium channel conjugated to KLH

Western blot analysis using beta2 antibody on rat brain lysate.



**POSITIVE CONTROL/TISSUE EXPRESSION**

Rat brain lysate

**COMMENTS**

This antibody can be used for Western blotting (5-10  $\mu\text{g/ml}$ ). Optimal concentration should be evaluated by serial dilutions.

**PURIFICATION**

Ammonium Sulfate Precipitation

**SHIP CONDITIONS**

Ship at ambient temperature, freeze upon arrival

**STORAGE CUSTOMER**

Product should be stored at  $-20^{\circ}\text{C}$ . Aliquot to avoid freeze/thaw cycles

**STABILITY**

Products are stable for one year from purchase when stored properly

**REFERENCES**

1. Perez-Reyes, E. et al 'Cloning and expression of a cardiac/brain beta subunit of the L-type calcium channel.' J. Biol. Chem. 1992, 267, 1792-1797

**PRODUCT SPECIFIC REFERENCES**