



SZABO SCANDIC

Part of Europa Biosite

Produktinformation



Forschungsprodukte & Biochemikalien



Zellkultur & Verbrauchsmaterial



Diagnostik & molekulare Diagnostik



Laborgeräte & Service

Weitere Information auf den folgenden Seiten!
See the following pages for more information!



Lieferung & Zahlungsart

siehe unsere [Liefer- und Versandbedingungen](#)

Zuschläge

- Mindermengenzuschlag
- Trockeneiszuschlag
- Gefahrgutzuschlag
- Expressversand

SZABO-SCANDIC HandelsgmbH

Quellenstraße 110, A-1100 Wien

T. +43(0)1 489 3961-0

F. +43(0)1 489 3961-7

mail@szabo-scandic.com

www.szabo-scandic.com

[linkedin.com/company/szaboscandic](https://www.linkedin.com/company/szaboscandic) 

b4 Calcium Channel. Rabbit Polyclonal Antibody
Voltage-dependent L-type calcium channel subunit beta-4

BACKGROUND

Heterologous expression studies have shown that the activity of voltage-gated Ca²⁺ channels is regulated by their beta subunits in a beta subunit isoform-specific manner. Our data show that all four beta subunit isoforms associate with L-type Ca²⁺ channels in mammalian brain. This beta subunit heterogeneity may play an important role for the fine tuning of L-type channel function and modulation in neurons.

ORDERING INFORMATION

CATALOG NUMBER
X1516P

SIZE
100 µg
FORM
Unconjugated

HOST/CLONE
Rabbit

FORMULATION
Provided as solution in phosphate buffered saline with 0.08% sodium azide

CONCENTRATION
See vial for concentration

ISOTYPE
IgG

APPLICATIONS
Western Blot

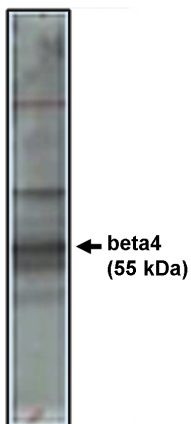
SPECIES REACTIVITY
Human

ACCESSION NUMBER
Human O00305

IMMUNOGEN

Synthetic peptide derived from the rat calcium channel beta4 subunit conjugated to KLH

Western blot analysis using beta4 antibody on rat brain lysate



POSITIVE CONTROL/TISSUE EXPRESSION

Rat brain lysate

COMMENTS

This antibody can be used for Western blotting (5-10 $\mu\text{g/ml}$). Optimal concentration should be evaluated by serial dilutions.

PURIFICATION

Ammonium Sulfate Precipitation

SHIP CONDITIONS

Ship at ambient temperature, freeze upon arrival

STORAGE CUSTOMER

Product should be stored at -20°C . Aliquot to avoid freeze/thaw cycles

STABILITY

Products are stable for one year from purchase when stored properly

REFERENCES

1. Castellano, A et al 'Cloning and expression of a neuronal calcium channel beta subunit' J. Biol. Chem. 1993, 268 (17), 12359-12366

PRODUCT SPECIFIC REFERENCES