



SZABO SCANDIC

Part of Europa Biosite

Produktinformation



Forschungsprodukte & Biochemikalien



Zellkultur & Verbrauchsmaterial



Diagnostik & molekulare Diagnostik



Laborgeräte & Service

Weitere Information auf den folgenden Seiten!
See the following pages for more information!



Lieferung & Zahlungsart

siehe unsere [Liefer- und Versandbedingungen](#)

Zuschläge

- Mindermengenzuschlag
- Trockeneiszuschlag
- Gefahrgutzuschlag
- Expressversand

SZABO-SCANDIC HandelsgmbH

Quellenstraße 110, A-1100 Wien

T. +43(0)1 489 3961-0

F. +43(0)1 489 3961-7

mail@szabo-scandic.com

www.szabo-scandic.com

[linkedin.com/company/szaboscandic](https://www.linkedin.com/company/szaboscandic)



Protein Phosphatase 5 (C Terminal). Rabbit Polyclonal Antibody

Serine/threonine-protein phosphatase 5 (EC 3.1.3.16) (PP5) (Protein phosphatase T) (PP-T) (PPT), PPP5C, PPP5

BACKGROUND

Protein phosphatase 5 (PP5) is a novel human protein serine/threonine phosphatase of molecular weight of 58 kDa. It is made up of a C-terminal phosphatase catalytic domain and an N-terminal domain, which has four repeats of 34 amino acids, three of which are tandemly arranged. The phosphatase domain contains all of the invariant motifs of the PP1/PP2A/PP2B gene family. However, it is not closely related to any other known member of this family of phosphatases. Thus it makes up a new subfamily of phosphatases. PP5 expressed in bacteria has been shown to dephosphorylate serine residues in proteins and is more sensitive than PP1 to the tumor promoter okadaic acid. PP5 appears to be localized to the nucleus suggesting that, like other nuclear tetratricopeptide (TPR)-containing proteins, it may play a role in the regulation of RNA biogenesis and mitosis.

ORDERING INFORMATION

CATALOG NUMBER

X1537P

SIZE

100 µg

FORM

Unconjugated

HOST/CLONE

Rabbit

FORMULATION

Provided as solution in phosphate buffered saline with 0.08% sodium azide

CONCENTRATION

See vial for concentration

ISOTYPE

IgG

APPLICATIONS

Western Blot

SPECIES REACTIVITY

Human

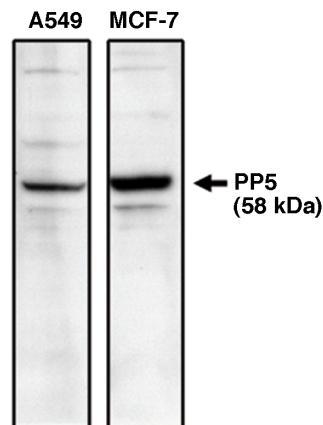
ACCESSION NUMBER

Human P53041

IMMUNOGEN

Synthetic peptide derived from the human protein phosphatase 5 protein.

Western blot analysis using PP5 specific antibody on A549 and MCF-7 cell lysates.



POSITIVE CONTROL/TISSUE EXPRESSION

A549 and MCF-7 cell lysates

COMMENTS

This antibody can be used for Western blotting (5-10 $\mu\text{g/ml}$). Other applications being evaluated. Optimal concentration should be evaluated by serial dilutions.

PURIFICATION

Ammonium Sulfate Precipitation

SHIP CONDITIONS

Ship at ambient temperature, freeze upon arrival

STORAGE CUSTOMER

Product should be stored at -20°C . Aliquot to avoid freeze/thaw cycles

STABILITY

Products are stable for one year from purchase when stored properly

REFERENCES

1. Chen, MX, et al. 'A novel human protein serine/threonine phosphatase, which possesses four tetratricopeptide repeat motifs and localizes to the nucleus.' EMBO J. 1994, 13, 4278-4290.
2. Zuo, Z., et al. 'Ser/Thr protein phosphatase type 5 (PP5) is a negative regulator of glucocorticoid receptor-mediated growth arrest.' Biochemistry 1999, 38, 8849-8857
3. Chinkers, M., et al. 'Protein phosphatase 5 in signal transduction.' Trends Endocrinol. Metab. 2001, 12, 28-32

PRODUCT SPECIFIC REFERENCES