



# SZABO SCANDIC

Part of Europa Biosite

## Produktinformation



Forschungsprodukte & Biochemikalien



Zellkultur & Verbrauchsmaterial



Diagnostik & molekulare Diagnostik



Laborgeräte & Service

Weitere Information auf den folgenden Seiten!  
See the following pages for more information!



### Lieferung & Zahlungsart

siehe unsere [Liefer- und Versandbedingungen](#)

### Zuschläge

- Mindermengenzuschlag
- Trockeneiszuschlag
- Gefahrgutzuschlag
- Expressversand

### SZABO-SCANDIC HandelsgmbH

Quellenstraße 110, A-1100 Wien

T. +43(0)1 489 3961-0

F. +43(0)1 489 3961-7

[mail@szabo-scandic.com](mailto:mail@szabo-scandic.com)

[www.szabo-scandic.com](http://www.szabo-scandic.com)

[linkedin.com/company/szaboscandic](https://www.linkedin.com/company/szaboscandic) 

**Phospho-cyclin dependent kinase 2. Rabbit Polyclonal Antibody**  
Anti-Cyclin-Dependent Kinase-2, Phosphorylated; p33<sup>cdk2</sup>

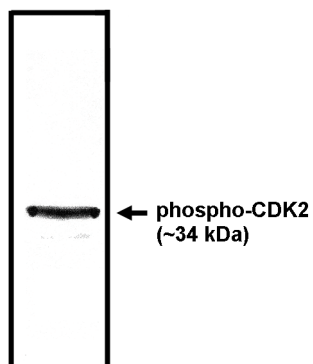
**BACKGROUND**

Cyclin-Dependent Kinase 2 (CDK2), also known as p33<sup>cdk2</sup> is expressed earlier in the cell cycle than is p34<sup>cdc2</sup>. Like p34<sup>cdc2</sup>, p33<sup>cdk2</sup> associates with cyclin A in human cells. However, kinase activity associated with cyclin A-cdc2 is found only in G2-phase. Cdk2 also complexes with cyclins E, D1, and D3. Cyclin E-cdk2 kinase is active in the G1- and S-phases of the cell cycle and is important (as does cyclin A-cdk2) for the progression from G1-to S-phase. The levels of cyclin A-cdk2 is maximal at the G1/S transition and both cdk2 and cyclin A are found associated with DNA in the initiation complex during replication. Rb protein acts as substrate for cdk2-cyclin E and/or cdk2-cyclin A in vivo. Cdk2 is activated and specifically localized to the nucleus during late G1-, S-, and G2-phase. This antibody recognizes only phosphorylated cdk2 protein.

**IMMUNOGEN**

Synthetic peptide derived from the phosphorylated human cdk2 protein.

Western blot analysis using anti-phospho-CDK2 antibody on baculovirus expressed cdk2 protein at a 1:2,000 dilution.



**ORDERING INFORMATION**

**CATALOG NUMBER**  
X1541P

**SIZE**  
20 µg  
**FORM**  
Unconjugated

**HOST/CLONE**  
Rabbit

**FORMULATION**  
Provided as solution in phosphate buffered saline with 0.08% sodium azide

**CONCENTRATION**  
See vial for concentration

**ISOTYPE**  
IgG

**APPLICATIONS**  
Western Blot, Immunoprecipitation

**SPECIES REACTIVITY**  
Human

**ACCESSION NUMBER**  
Human P24941

**POSITIVE CONTROL/TISSUE EXPRESSION**

CDK2 expressed in baclovirus

**COMMENTS**

Antibody can be used for Western blotting (1:2,000 dilution) and immunoprecipitation. Optimal concentration should be evaluated by serial dilutions.

**PURIFICATION**

Ammonium Sulfate Precipitation

**SHIP CONDITIONS**

Ship at ambient temperature, freeze upon arrival

**STORAGE CUSTOMER**

Product should be stored at -20°C. Aliquot to avoid freeze/thaw cycles

**STABILITY**

Products are stable for one year from purchase when stored properly

**REFERENCES**

1. Coates, S., et al. 'A new pathway for mitogen-dependent cdk2 regulation uncovered in p27(Kip1)-deficient cells.' *Curr. Biol.* 1999, 9, 163-173

2. Lacy, S. & Whyte, P. 'Identification of a p130 domain mediating interactions with cyclin A/cdk2 and cyclin E/cdk2 complexes.' *Oncogene* 1997, 14, 2395-2406

**PRODUCT SPECIFIC REFERENCES**