



# SZABO SCANDIC

Part of Europa Biosite

## Produktinformation



Forschungsprodukte & Biochemikalien



Zellkultur & Verbrauchsmaterial



Diagnostik & molekulare Diagnostik



Laborgeräte & Service

Weitere Information auf den folgenden Seiten!  
See the following pages for more information!



### Lieferung & Zahlungsart

siehe unsere [Liefer- und Versandbedingungen](#)

### Zuschläge

- Mindermengenzuschlag
- Trockeneiszuschlag
- Gefahrgutzuschlag
- Expressversand

### SZABO-SCANDIC HandelsgmbH

Quellenstraße 110, A-1100 Wien

T. +43(0)1 489 3961-0

F. +43(0)1 489 3961-7

[mail@szabo-scandic.com](mailto:mail@szabo-scandic.com)

[www.szabo-scandic.com](http://www.szabo-scandic.com)

[linkedin.com/company/szaboscandic](https://www.linkedin.com/company/szaboscandic) 

## TrpE. Mouse Monoclonal Antibody

### BACKGROUND

Specific for 37 kDa TrpE protein. TrpE is a commonly used tag in some protein expression systems. This antibody can be used for analysis of expression of proteins alone or in conjunction with protein specific antibodies. Can also be used as a negative control antibody as it does not react with any known mammalian protein.

### ORDERING INFORMATION

**CATALOG NUMBER**

X1556M

**SIZE**100  $\mu$ g**FORM**

Unconjugated

**HOST/CLONE**

Mouse Clone 17

**FORMULATION**

Provided as solution in phosphate buffered saline with 0.08% sodium azide

**CONCENTRATION**

See vial for concentration

**ISOTYPE**

IgG

**APPLICATIONS**

Western Blot

**SPECIES REACTIVITY**

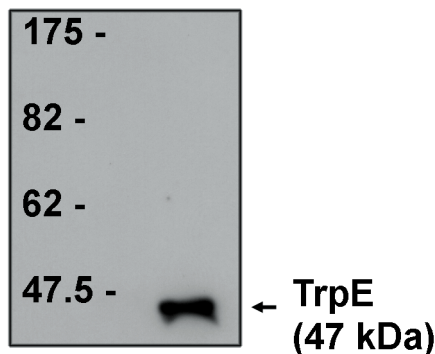
Ubiquitous

**ACCESSION NUMBER**

### IMMUNOGEN

Hybridoma produced by the fusion of splenocytes from mice immunized with full length recombinant TrpE protein and mouse myeloma cells.

Western blot analysis using TrpE antibody on purified TrpE protein at 1  $\mu$ g/ml.



**POSITIVE CONTROL/TISSUE EXPRESSION**

Not Available

**COMMENTS**

Antibody can be used for Western blotting of TrpE conjugated proteins (1-5  $\mu\text{g/ml}$ ). Optimal concentration should be evaluated by serial dilutions.

**PURIFICATION**

Protein A/G Chromatography

**SHIP CONDITIONS**

Ship at ambient temperature, freeze upon arrival

**STORAGE CUSTOMER**

Product should be stored at  $-20^{\circ}\text{C}$ . Aliquot to avoid freeze/thaw cycles

**STABILITY**

Products are stable for one year from purchase when stored properly

**REFERENCES**

1. Chen, P., et al. 'Use of TrpE fusion protein to identify antigenic domains within the BIV envelope protein.' J. Virol. Methods 1994: 47, 331-343
2. Mercy, M.R., et al. 'A new series of trpE vectors that enable high expression of nonfusion proteins in bacteria.' Protein Expr. Purif. 1992: 3, 57-64

**PRODUCT SPECIFIC REFERENCES**