



# SZABO SCANDIC

Part of Europa Biosite

## Produktinformation



Forschungsprodukte & Biochemikalien



Zellkultur & Verbrauchsmaterial



Diagnostik & molekulare Diagnostik



Laborgeräte & Service

Weitere Information auf den folgenden Seiten!  
See the following pages for more information!



### Lieferung & Zahlungsart

siehe unsere [Liefer- und Versandbedingungen](#)

### Zuschläge

- Mindermengenzuschlag
- Trockeneiszuschlag
- Gefahrgutzuschlag
- Expressversand

### SZABO-SCANDIC HandelsgmbH

Quellenstraße 110, A-1100 Wien

T. +43(0)1 489 3961-0

F. +43(0)1 489 3961-7

[mail@szabo-scandic.com](mailto:mail@szabo-scandic.com)

[www.szabo-scandic.com](http://www.szabo-scandic.com)

[linkedin.com/company/szaboscandic](https://www.linkedin.com/company/szaboscandic) 

**SURF1. Rabbit Polyclonal Antibody**  
Human Ssu72

**BACKGROUND**

Human Ssu72 is a highly conserved homologue of yeast Ssu72, a CTD phosphatase and a component of the polyadenylation/termination machinery. The human Ssu72 is located on Chromosome 1p36 and seems to represent a single gene. It was identified as a pRb binding factor and was also shown to interact with TFIIB and yeast PTA1. Rabbit polyclonal antibodies were raised against SSU72 fusion protein. The ABs recognize a single band of ~30 Kda on immunoblots of various human cell lines but do not work well on mouse tissues.

**ORDERING INFORMATION**

**CATALOG NUMBER**

X1562P

**SIZE**

100 µg

**FORM**

Unconjugated

**HOST/CLONE**

Rabbit

**FORMULATION**

Provided as solution in phosphate buffered saline with 0.08% sodium azide

**CONCENTRATION**

See vial for concentration

**ISOTYPE**

IgG

**APPLICATIONS**

Western Blot

**SPECIES REACTIVITY**

Human

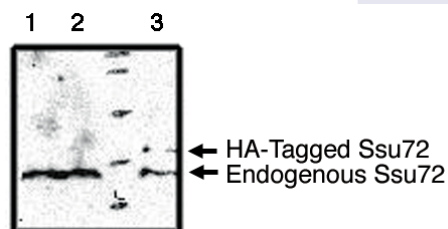
**ACCESSION NUMBER**

Human Q15526

**IMMUNOGEN**

Full length recombinant human Ssu72 protein

Western blot analysis using Ssu72 antibody on MCF-7 (1), Cos-7 (2) and Cos-7 cells transfected with HA-Tagged Ssu72 protein (3).



**POSITIVE CONTROL/TISSUE EXPRESSION**

MCF-7 and Cos-7 cells

**COMMENTS**

Antibody can be used for Western blot (1-5  $\mu$ g/ml). Optimal concentration should be evaluated by serial dilutions.

**PURIFICATION**

Ammonium Sulfate Precipitation

**SHIP CONDITIONS**

Ship at ambient temperature, freeze upon arrival

**STORAGE CUSTOMER**

Product should be stored at -20°C. Aliquot to avoid freeze/thaw cycles

**STABILITY**

Products are stable for one year from purchase when stored properly

**REFERENCES**

1. St-Pierre, B., et al. 'Conserved and specific functions of mammalian ssu72' *Nucleic Acids Res.* 2005, 33, 464-477
2. Krishnamurthy, S., et al. 'Ssu72 is an RNA polymerase II CTD phosphatase' *Mol. Cell* 2004, 14, 387-394
3. Steinmetz, E.J., Brow, DA. 'Ssu72 protein mediates both poly(A)-coupled and poly(A)-independent termination of RNA polymerase II transcription' *Mol Cell Biol* 2003, 23, 6339-6349

**PRODUCT SPECIFIC REFERENCES**