



SZABO SCANDIC

Part of Europa Biosite

Produktinformation



Forschungsprodukte & Biochemikalien



Zellkultur & Verbrauchsmaterial



Diagnostik & molekulare Diagnostik



Laborgeräte & Service

Weitere Information auf den folgenden Seiten!
See the following pages for more information!



Lieferung & Zahlungsart

siehe unsere [Liefer- und Versandbedingungen](#)

Zuschläge

- Mindermengenzuschlag
- Trockeneiszuschlag
- Gefahrgutzuschlag
- Expressversand

SZABO-SCANDIC HandelsgmbH

Quellenstraße 110, A-1100 Wien

T. +43(0)1 489 3961-0

F. +43(0)1 489 3961-7

mail@szabo-scandic.com

www.szabo-scandic.com

[linkedin.com/company/szaboscandic](https://www.linkedin.com/company/szaboscandic) 

Estrogen Receptor. Mouse Monoclonal Antibody

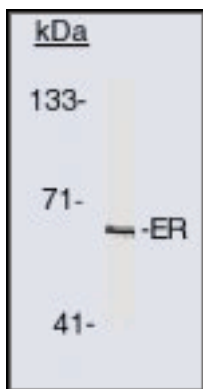
BACKGROUND

The estrogen receptor (ER) gene consists of more than 140kb of genomic DNA divided into 8 exons, being translated into a protein with six functionally discrete domains required for transcription activation function, binding to estrogen response element (ERE) constitutive dimerization, binding to heat shock proteins, and ligand recognition. The ER is an important regulator of growth and differentiation in the mammary gland. Presence of ER in breast tumors indicates an increased likelihood of response to anti-estrogen (e.g. tamoxifen) therapy.

IMMUNOGEN

Hybridoma produced by the fusion of splenocytes from mice immunized with the 35 kDa C-terminal fragment (aa 302-595) of human ER expressed in *E. coli* and mouse myeloma cells.

Western blot analysis using estrogen receptor antibody on human cells at 1-2 μ g/ml.



ORDERING INFORMATION

CATALOG NUMBER

X1567M

SIZE

100 μ g

FORM

Unconjugated

HOST/CLONE

Mouse Clone TE111.5D11

FORMULATION

Provided as solution in phosphate buffered saline with 0.08% sodium azide

CONCENTRATION

See vial for concentration

ISOTYPE

IgG1

APPLICATIONS

Western Blotting, Immunoprecipitation, Gel Supershift, Binding blocking, Chromatin Precipitation

SPECIES REACTIVITY

Human, Mouse, Rat, Sheep, Rabbit, Hamster, Cow, Pig, Dog, Chicken

ACCESSION NUMBER

Human P11474

POSITIVE CONTROL/TISSUE EXPRESSION

T47D Cells

COMMENTS

This antibody can be used gel supershift assays (neat concentration), immunoprecipitation on native and denatured lysate (2 μ g/mg of protein lysate), Western blotting (1-2 μ g/ml) and chromatin precipitation. Can also be used to block binding of estrogen to the estrogen receptor. Optimal concentration should be evaluated by serial dilutions.

PURIFICATION

Protein A/G Chromatography

SHIP CONDITIONS

Ship at ambient temperature, freeze upon arrival

STORAGE CUSTOMER

Product should be stored at -20°C. Aliquot to avoid freeze/thaw cycles

STABILITY

Products are stable for one year from purchase when stored properly

REFERENCES

1. Abbondanza, C. *et. al.* 'Characterization and epitope mapping of a new panel of monoclonal antibodies to estradiol receptor.' *Steroids*, 1993, 58, 4-12

PRODUCT SPECIFIC REFERENCES