



SZABO SCANDIC

Part of Europa Biosite

Produktinformation



Forschungsprodukte & Biochemikalien



Zellkultur & Verbrauchsmaterial



Diagnostik & molekulare Diagnostik



Laborgeräte & Service

Weitere Information auf den folgenden Seiten!
See the following pages for more information!



Lieferung & Zahlungsart

siehe unsere [Liefer- und Versandbedingungen](#)

Zuschläge

- Mindermengenzuschlag
- Trockeneiszuschlag
- Gefahrgutzuschlag
- Expressversand

SZABO-SCANDIC HandelsgmbH

Quellenstraße 110, A-1100 Wien

T. +43(0)1 489 3961-0

F. +43(0)1 489 3961-7

mail@szabo-scandic.com

www.szabo-scandic.com

[linkedin.com/company/szaboscandic](https://www.linkedin.com/company/szaboscandic) 

Lysophosphatidic Acid 2 (LPA2) Receptor (EDG4) CT. Rabbit Polyclonal Antibody

BACKGROUND

EDG4 belongs to a family of G-protein coupled receptors whose ligands are lysophospholipids. The ligand for EDG4 is lysophospholipid. There are 6 known members of the EDG receptor family and they are implicated in mediating growthrelated effects such as induction of cellular proliferation, alterations in differentiation and survival and suppression of apoptosis. They also evoke cellular effector functions that are dependent on cytoskeletal responses such as contraction, secretion, adhesion and chemotaxis. EDG receptors are developmentally regulated and differ in tissue distribution. They couple to multiple types of G proteins to signal through ras and MAP kinase, rho, phospholipase C and several protein tyrosine kinases. EDG4 is expressed in testes, ovarian tumor and leukocyte containing tissues.

ORDERING INFORMATION

CATALOG NUMBER

X1570P

SIZE

100 µg

FORM

Unconjugated

HOST/CLONE

Rabbit

FORMULATION

Provided as solution in phosphate buffered saline with 0.08% sodium azide

CONCENTRATION

See vial for concentration

ISOTYPE

IgG

APPLICATIONS

Western Blot

SPECIES REACTIVITY

Human

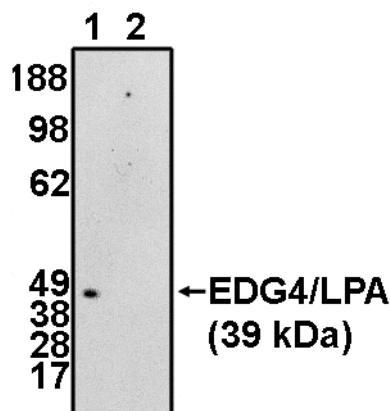
ACCESSION NUMBER

Human Q9HBW0

IMMUNOGEN

Antibody raised against a unique synthetic peptide derived from the N-terminal of the human EDG4 protein. Antigen sequence differs in mouse and rat by one amino acid.

Western blot analysis using EDG4/LPA2 (NT) antibody at 5 µg/ml on RH7777 cells transfected with EDG4/LPA2 protein in the absense (1) and presense (2) of blocking peptide.



POSITIVE CONTROL/TISSUE EXPRESSION

RH7777 cells transfected with EDG4 protein

COMMENTS

This antibody can be used for Western blotting (5-10 $\mu\text{g/ml}$). Western blot should be visualized using a high sensitivity secondary/substrate system (i.e. Pierce's SuperSignal West Femto Maximum Sensitivity Substrate). Optimal concentration should be evaluated by serial dilutions.

PURIFICATION

Ammonium Sulfate Precipitation

SHIP CONDITIONS

Ship at ambient temperature, freeze upon arrival

STORAGE CUSTOMER

Product should be stored at -20°C . Aliquot to avoid freeze/thaw cycles

STABILITY

Products are stable for one year from purchase when stored properly

REFERENCES

1. Goetzl EJ and An, S. Diversity of cellular receptors and functions for the lysophospholipid growth factors lysophosphatidic acid and sphingosine 1-phosphate. *FASEB J.* 1998, 12, 1589-98.
2. An, S., Goetzl, E.J., Lee, H. Signaling mechanisms and molecular characteristics of G protein-coupled receptors for lysophosphatidic acid and sphingosine 1-phosphate. *J. Cell Biochem. Suppl.* 1998, 30-31, 147-57.
3. Yun, C. Chris, et al. 'LPA2 receptor mediates mitogenic signals in human colon cancer cells.' *Am. J. Physiol Cell Physiol* 2005, 289, C2-C11

PRODUCT SPECIFIC REFERENCES

1. Yun, C. Chris, et al, 'LPA2 receptor mediates mitogenic signals in human colon cancer cells' *American Journal of Cell Physiology* 2005, 289, C2-C11
2. Shida, D., et al, 'Aberrant expression of lysophosphatidic acid (LPA) receptors in human colorectal cancer' *Laboratory Investigation* 2004, 84, 1352-1362