



SZABO SCANDIC

Part of Europa Biosite

Produktinformation



Forschungsprodukte & Biochemikalien



Zellkultur & Verbrauchsmaterial



Diagnostik & molekulare Diagnostik



Laborgeräte & Service

Weitere Information auf den folgenden Seiten!
See the following pages for more information!



Lieferung & Zahlungsart

siehe unsere [Liefer- und Versandbedingungen](#)

Zuschläge

- Mindermengenzuschlag
- Trockeneiszuschlag
- Gefahrgutzuschlag
- Expressversand

SZABO-SCANDIC HandelsgmbH

Quellenstraße 110, A-1100 Wien

T. +43(0)1 489 3961-0

F. +43(0)1 489 3961-7

mail@szabo-scandic.com

www.szabo-scandic.com

[linkedin.com/company/szaboscandic](https://www.linkedin.com/company/szaboscandic) 



G Protein b5-D1. Rabbit Polyclonal Antibody

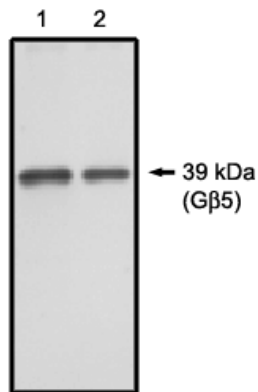
BACKGROUND

The Gbeta5 protein is a G protein subunit present predominantly in the central nervous system. This protein appears to be expressed in two forms, one found in the brain (39 kDa) and one found in the retina (44 kDa). It has also been found that Gb5 associates tightly with RGS7, a member of the superfamily of negative regulators of G protein signaling. These complexes have been localized to most regions of the brain, whereas Gβ1-4 exhibit no observable colocalization with RGS7, despite their widespread codistribution throughout similar neuronal networks. This antibody is specific for a peptide sequence within the D1 blade which is not found in the Gbeta's 1-4.

IMMUNOGEN

Unique peptide sequence derived from the D1 blade of the Gβ5 protein.

Western blot analysis using Gβ5 antibody on 20 ng (1) and 10 ng (2) purified Gβ5 protein.



ORDERING INFORMATION

CATALOG NUMBER
X1594P

SIZE
100 μg
FORM
Unconjugated

HOST/CLONE
Rabbit

FORMULATION
Provided as solution in phosphate buffered saline with 0.08% sodium azide

CONCENTRATION
See vial for concentration

ISOTYPE
IgG

APPLICATIONS
Western Blot

SPECIES REACTIVITY
Murine, Rat, Human

ACCESSION NUMBER
Human O14775

POSITIVE CONTROL/TISSUE EXPRESSION

Plasma membranes from rat cerebrum

COMMENTS

Antibody can be used for Western blotting (5-10 $\mu\text{g/ml}$). Optimal concentration should be evaluated by serial dilutions.

PURIFICATION

Ammonium Sulfate Precipitation

SHIP CONDITIONS

Ship at ambient temperature, freeze upon arrival

STORAGE CUSTOMER

Product should be stored at -20°C . Aliquot to avoid freeze/thaw cycles

STABILITY

Products are stable for one year from purchase when stored properly

REFERENCES

1. Liang, J.J., et al. 'RGS7 complex formation and colocalization with the Gbeta5 subunit in the adult rat and influence on Gbeta5gamma2-mediated PLCbeta signaling.' J. Neurosci. Res. 2000: 60, 58-64
2. Cabrera, J.L., et al. 'Identification of the Gbeta5-RGS7 protein complex in the retina.' Biochem Biophys Res Commun. 1998: 249, 898-902
3. Watson, A.J., et al. 'A novel form of the G protein beta subunit Gbeta5 is specifically expressed in the vertebrate retina.' J. Biol. Chem. 1996: 271, 28154-28160

PRODUCT SPECIFIC REFERENCES