



SZABO SCANDIC

Part of Europa Biosite

Produktinformation



Forschungsprodukte & Biochemikalien



Zellkultur & Verbrauchsmaterial



Diagnostik & molekulare Diagnostik



Laborgeräte & Service

Weitere Information auf den folgenden Seiten!
See the following pages for more information!



Lieferung & Zahlungsart

siehe unsere [Liefer- und Versandbedingungen](#)

Zuschläge

- Mindermengenzuschlag
- Trockeneiszuschlag
- Gefahrgutzuschlag
- Expressversand

SZABO-SCANDIC HandelsgmbH

Quellenstraße 110, A-1100 Wien

T. +43(0)1 489 3961-0

F. +43(0)1 489 3961-7

mail@szabo-scandic.com

www.szabo-scandic.com

[linkedin.com/company/szaboscandic](https://www.linkedin.com/company/szaboscandic) 

Gi alpha 1/2. Rabbit Polyclonal Antibody

BACKGROUND

GTP-binding proteins (G-proteins) play a critical role in signal transduction by coupling receptors to effectors. The intracellular consequences of G-protein activation include second messenger generation, protein phosphorylation, ion channel activation, gene induction, cell growth, and differentiation. Gi belongs to the pertussis toxin sensitive G-proteins. Gi consists of three different subtypes of α -subunits ($\alpha i1$, $\alpha i2$ and $\alpha i3$)

ORDERING INFORMATION

CATALOG NUMBER

X1595P

SIZE100 μ g**FORM**

Unconjugated

HOST/CLONE

Rabbit

FORMULATION

Provided as solution in phosphate buffered saline with 0.08% sodium azide

CONCENTRATION

See vial for concentration

ISOTYPE

IgG

APPLICATIONS

Western Blot

SPECIES REACTIVITY

Murine, Rat, Human, Bovine

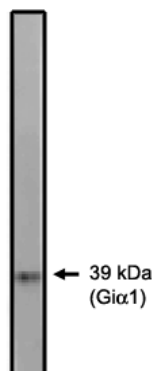
ACCESSION NUMBER

Human P04899

IMMUNOGEN

Peptide corresponding to amino acids 345-354 of $G_{i\alpha 1}$ and 346-355 of $G_{i\alpha 2}$.

Western blot analysis using $G_{i\alpha 1/2}$ antibody on 10 ng of purified $G_{i\alpha 1}$ protein.



POSITIVE CONTROL/TISSUE EXPRESSION

IMR-5 cells or brain

COMMENTS

Antibody can be used for Western blotting (5-10 $\mu\text{g/ml}$). Optimal concentration should be evaluated by serial dilutions.

PURIFICATION**SHIP CONDITIONS**

Ship at ambient temperature, freeze upon arrival

STORAGE CUSTOMER

Product should be stored at -20°C . Aliquot to avoid freeze/thaw cycles

STABILITY

Products are stable for one year from purchase when stored properly

REFERENCES

1. Li X, et al. Pertussis toxin-sensitive G protein alpha-subunits: production of monoclonal antibodies and detection of differential increases on differentiation of PC12 and LA-N-5 cells. J. Neurochem. 1995, 64, 1107-1117.

PRODUCT SPECIFIC REFERENCES