



SZABO SCANDIC

Part of Europa Biosite

Produktinformation



Forschungsprodukte & Biochemikalien



Zellkultur & Verbrauchsmaterial



Diagnostik & molekulare Diagnostik



Laborgeräte & Service

Weitere Information auf den folgenden Seiten!
See the following pages for more information!



Lieferung & Zahlungsart

siehe unsere [Liefer- und Versandbedingungen](#)

Zuschläge

- Mindermengenzuschlag
- Trockeneiszuschlag
- Gefahrgutzuschlag
- Expressversand

SZABO-SCANDIC HandelsgmbH

Quellenstraße 110, A-1100 Wien

T. +43(0)1 489 3961-0

F. +43(0)1 489 3961-7

mail@szabo-scandic.com

www.szabo-scandic.com

[linkedin.com/company/szaboscandic](https://www.linkedin.com/company/szaboscandic) 

OGR1/GPR68. Rabbit Polyclonal Antibody
GPR68; Ovarian Cancer G Protein-Coupled Receptor 1

BACKGROUND

OGR1 (originally identified as GPR68) is a high-affinity receptor for sphingosylphosphorylcholine (SPC). SPC is a member of a class of bioactive lipids which regulate cellular functions. These functions include cell proliferation and growth inhibition, smooth muscle contraction and wound healing. SPC also stimulated signalling pathways that induce tyrosine phosphorylation, activate MAP kinases and protein kinase C, modify ion channel activity and increase intracellular Ca^{2+} concentration. OGR1 is expressed in placenta, lung, liver, spleen, testis, small intestine and peripheral blood leukocytes. It is not found in thymus, ovary, colon, skeletal muscle, kidney or pancreas.

ORDERING INFORMATION

CATALOG NUMBER
X1600P

SIZE
100 μ g
FORM
Unconjugated

HOST/CLONE
Rabbit

FORMULATION
Provided as solution in phosphate buffered saline with 0.08% sodium azide

CONCENTRATION
See vial for concentration

ISOTYPE
IgG

APPLICATIONS
Western Blot, IHC, Neutralization

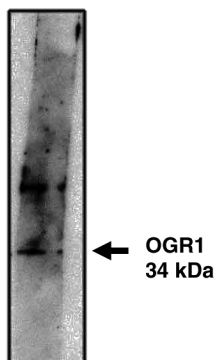
SPECIES REACTIVITY
Human

ACCESSION NUMBER
Human Q15743

IMMUNOGEN

Recombinant protein derived from human OGR1 (GPR68) protein

Western blot analysis using OGR1 antibody on cells transfected with OGR1 protein at 10 μ g/ml. Blot developed using Pierce's SuperSignal West Femto Maximum Sensitivity Substrate.



POSITIVE CONTROL/TISSUE EXPRESSION

OGR1 transfected cell lysate

COMMENTS

Antibody can be used for Western blotting (5-10 μ g/ml). Western blot should be visualized using a high sensitivity secondary/substrate system (i.e. Pierce's SuperSignal West Femto Maximum Sensitivity Substrate). Optimal concentration should be evaluated by serial dilutions.

PURIFICATION

Ammonium Sulfate Precipitation

SHIP CONDITIONS

Ship at ambient temperature, freeze upon arrival

STORAGE CUSTOMER

Product should be stored at -20°C. Aliquot to avoid freeze/thaw cycles

STABILITY

Products are stable for one year from purchase when stored properly

REFERENCES

1. Xu, Y., et al. 'Sphingosylphosphorylcholine is a ligand for ovarian cancer G-protein-coupled receptor 1.' Nature Cell Biol. 2000: 2, 261-267

PRODUCT SPECIFIC REFERENCES