



# SZABO SCANDIC

Part of Europa Biosite

## Produktinformation



Forschungsprodukte & Biochemikalien



Zellkultur & Verbrauchsmaterial



Diagnostik & molekulare Diagnostik



Laborgeräte & Service

Weitere Information auf den folgenden Seiten!  
See the following pages for more information!



### Lieferung & Zahlungsart

siehe unsere [Liefer- und Versandbedingungen](#)

### Zuschläge

- Mindermengenzuschlag
- Trockeneiszuschlag
- Gefahrgutzuschlag
- Expressversand

### SZABO-SCANDIC HandelsgmbH

Quellenstraße 110, A-1100 Wien

T. +43(0)1 489 3961-0

F. +43(0)1 489 3961-7

[mail@szabo-scandic.com](mailto:mail@szabo-scandic.com)

[www.szabo-scandic.com](http://www.szabo-scandic.com)

[linkedin.com/company/szaboscandic](https://www.linkedin.com/company/szaboscandic) 

**Sphingosine 1-Phosphate Lyase 1. Rabbit Antigen Immunoaffinity Purified Polyclonal**  
EC 4.1.2.27, SP-lyase, hSPL or Sphingosine-1-phosphate aldolase. Gene name: SGPL1 or KIAA1252

**BACKGROUND**

Sphingosine-1-phosphate lyase cleaves phosphorylated sphingoid bases, such as sphingosine-1-phosphate, into fatty aldehydes and phosphoethanolamine. Elevates stress-induced ceramide production and apoptosis. The catalytic activity of sphingosine 1-phosphate lyase converts sphingosine 1-phosphate to phosphoethanolamine and palmitaldehyde using Pyridoxal phosphate as a co-factor. Sphingosine 1-phosphate lyase is a type III membrane protein found in the endoplasmic reticulum. Sphingosine 1-phosphate lyase is found primarily in the liver and kidney. Sphingosine 1-phosphate lyase belongs to the group II decarboxylase family.

**ORDERING INFORMATION**

**CATALOG NUMBER**  
X1631P

**SIZE**  
10 Miniblots

**FORM**  
Unconjugated

**HOST/CLONE**  
Rabbit

**FORMULATION**  
Provided as ligand affinity purified antibody in phosphate buffered saline with 0.08% sodium azide

**CONCENTRATION**  
Lot specific, see vial label

**ISOTYPE**  
IgG

**APPLICATIONS**  
Western Blot

**SPECIES REACTIVITY**  
Human, Mouse, Rat, Bovine

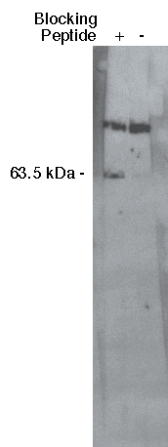
**ACCESSION NUMBER**

Human	O95470
Mouse	Q8R0X7
Rat	Q8CHN6

**IMMUNOGEN**

Synthetic peptide derived from the sphingosine 1-phosphate lyase 1 protein.

**Western blot analysis using S1P lyase 1 antibody at a dilution of 1:400 on MDBK cell lysate (Cat. No. X1007) using Exalpha's mouse anti-rabbit HRP secondary antibody (Cat. No. X1207M) at 1:75,000.**



**POSITIVE CONTROL/TISSUE EXPRESSION**

Madin-Darby Bovine Kidney (MDBK) cell lysate (Cat. No. X1007)

**COMMENTS**

Antibody can be used for Western blotting (1:400 dilution). Other applications not yet tested. Optimal concentration should be evaluated by serial dilutions.

**PURIFICATION**

Antigen Immunoaffinity Purification

**SHIP CONDITIONS**

Ship on gel ice, store at -20°C immediately upon arrival

**STORAGE CUSTOMER**

Product should be stored at -20°C. Aliquot to avoid freeze/thaw cycles

**STABILITY**

Products are stable for one year from purchase when stored properly

**REFERENCES**

1. Van Veldhoven P.P., et al; Human sphingosine-1-phosphate lyase: cDNA cloning, functional expression studies and mapping to chromosome 10q22. *Biochim. Biophys. Acta* 1487:128-134(2000).
2. Reiss U., et al; Sphingosine-phosphate lyase enhances stress-induced ceramide generation and apoptosis. *J. Biol. Chem.* 279:1281-1290(2004).
3. Nagase T., et al; Prediction of the coding sequences of unidentified human genes. XV. The complete sequences of 100 new cDNA clones from brain which code for large proteins in vitro.; *DNA Res.* 6:337-345(1999).
4. Strausberg R.L., et al; Generation and initial analysis of more than 15,000 full-length human and mouse cDNA sequences. *Proc. Natl. Acad. Sci. U.S.A.* 99:16899-16903(2002).

**PRODUCT SPECIFIC REFERENCES**

1. Katsuma, Susumu, et al, 'Signalling mechanisms in sphingosine 1-phosphate-promoted mesangial cell proliferation ' *Genes to Cells* 2002, 7, , 1217-1230