



SZABO SCANDIC

Part of Europa Biosite

Produktinformation



Forschungsprodukte & Biochemikalien



Zellkultur & Verbrauchsmaterial



Diagnostik & molekulare Diagnostik



Laborgeräte & Service

Weitere Information auf den folgenden Seiten!
See the following pages for more information!



Lieferung & Zahlungsart

siehe unsere [Liefer- und Versandbedingungen](#)

Zuschläge

- Mindermengenzuschlag
- Trockeneiszuschlag
- Gefahrgutzuschlag
- Expressversand

SZABO-SCANDIC HandelsgmbH

Quellenstraße 110, A-1100 Wien

T. +43(0)1 489 3961-0

F. +43(0)1 489 3961-7

mail@szabo-scandic.com

www.szabo-scandic.com

[linkedin.com/company/szaboscandic](https://www.linkedin.com/company/szaboscandic) 



Lipid Phosphate Phosphatase Related Protein 2 . Rabbit Antigen Immunoaffinity Purified Polyclonal
LPPRP2; Plasticity-Related Gene 4

BACKGROUND

Phospholipid-mediated signalling on neurons provokes diverse responses such as neurogenesis, pattern formation and neurite remodelling. A recently uncovered novel set of molecules in the mammalian brain, named plasticity-related genes (PRGs) mediate lipid phosphate phosphatase activity and provide evidence for their involvement in mechanisms of neuronal plasticity.

ORDERING INFORMATION

CATALOG NUMBER
X1647P

SIZE
10 Miniblots
FORM
Unconjugated

HOST/CLONE
Rabbit

FORMULATION
Provided as solution in phosphate buffered saline with 0.08% sodium azide

CONCENTRATION
Lot specific, see vial

ISOTYPE
IgG

APPLICATIONS
Western Blot, Enzyme Immunoassay

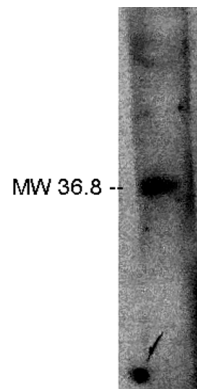
SPECIES REACTIVITY
Human

ACCESSION NUMBER
Human Q96GM1

IMMUNOGEN

Synthetic peptide derived from the LPPRP2 protein

Western blot analysis using LPPRP2 antibody on human brain lysate.



POSITIVE CONTROL/TISSUE EXPRESSION

Human brain lysate (Cat. No. X1633C)

COMMENTS

Antibody can be used for Western blotting (see vial for dilution) and EIA. Optimal concentration should be evaluated by serial dilutions.

PURIFICATION

Antigen Immunoaffinity Purification

SHIP CONDITIONS

Ship on dry ice, freeze upon arrival

STORAGE CUSTOMER

Product should be stored at -70°C. Aliquot to avoid freeze/thaw cycles

STABILITY

Products are stable for one year from purchase when stored properly

REFERENCES

- [1] Strausberg R.L., et al Generation and initial analysis of more than 15,000 full-length human and mouse cDNA sequences.; Proc. Natl. Acad. Sci. U.S.A. 99:16899-16903(2002).
- [2] Strausberg R.; Submitted (JUN-2001) to the EMBL/GenBank/DDBJ databases.
- [3] Morris A.J., Sigal Y.J., McDermott M., Sciorra V.A.; Submitted (MAY-2003) to the EMBL/GenBank/DDBJ databases.
- [4] Savaskan N.E., Brauer A.U., Nitsch R.; Molecular cloning and expression regulation of PRG-3, a new member of the plasticity-related gene family.; Eur. J. Neurosci. 19:212-220(2004).

PRODUCT SPECIFIC REFERENCES

1. Zhao, Yutong, et al, 'Lipid phosphate phosphatase-1 regulates lysophosphatidic acid-induced calcium release, NF- B activation and interleukin-8 secretion in human bronchial epithelial cells' Biochem Journal 2005, 385, , 493-502