



SZABO SCANDIC

Part of Europa Biosite

Produktinformation



Forschungsprodukte & Biochemikalien



Zellkultur & Verbrauchsmaterial



Diagnostik & molekulare Diagnostik



Laborgeräte & Service

Weitere Information auf den folgenden Seiten!
See the following pages for more information!



Lieferung & Zahlungsart

siehe unsere [Liefer- und Versandbedingungen](#)

Zuschläge

- Mindermengenzuschlag
- Trockeneiszuschlag
- Gefahrgutzuschlag
- Expressversand

SZABO-SCANDIC HandelsgmbH

Quellenstraße 110, A-1100 Wien

T. +43(0)1 489 3961-0

F. +43(0)1 489 3961-7

mail@szabo-scandic.com

www.szabo-scandic.com

[linkedin.com/company/szaboscandic](https://www.linkedin.com/company/szaboscandic) 



Lipid Phosphate Phosphohydrolase 2. Rabbit Antigen Immunoaffinity Purified Polyclonal
Pan Phosphatidic Acid Phosphatase 2C; Pan PPAP

BACKGROUND

Phosphatidic acid (PA), lysophosphatidic acid, ceramide 1-phosphate (C1P), and sphingosine 1-phosphate (S1P) are lipid mediators generated by phospholipases, sphingomyelinases, and lipid kinases. The major pathway for degradation of these lipids is dephosphorylation catalyzed by members of two classes (types 1 and 2) of phosphohydrolase activities (PAPs). cDNAs encoding two type 2 PAPs, PAP-2a and -2b, have been expressed by transient transfection and shown to catalyze hydrolysis of PA, C1P, and S1P.

ORDERING INFORMATION

CATALOG NUMBER
X1650P

SIZE
10 Miniblots
FORM
Unconjugated

HOST/CLONE
Rabbit

FORMULATION
Provided as solution in phosphate buffered saline with 0.08% sodium azide

CONCENTRATION
Lot specific, see vial

ISOTYPE
IgG

APPLICATIONS
Western Blot, Enzyme Immunoassay

SPECIES REACTIVITY
Human, Porcine

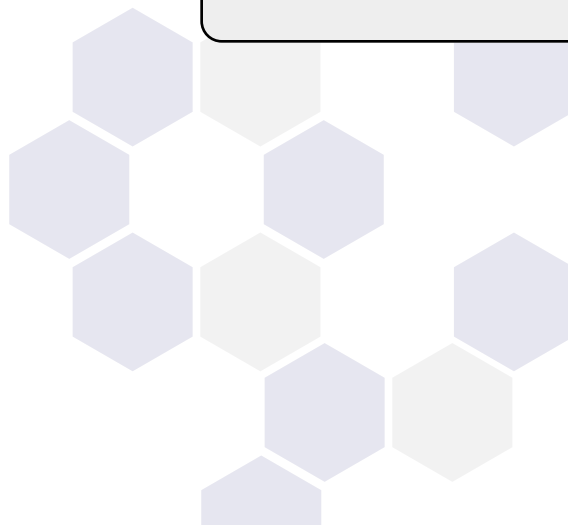
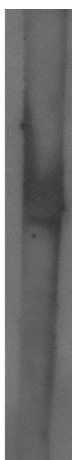
ACCESSION NUMBER
Human O43688

IMMUNOGEN

Synthetic peptide derived from the lipid phosphate phosphohydrolase 2 protein

Western blot analysis using Pan PPAP antibody on human brain lysate.

MW 32.5-



POSITIVE CONTROL/TISSUE EXPRESSION

Human brain lysate (Cat. No. X1633C)

COMMENTS

Antibody can be used for Western blotting (see vial for dilution) and EIA. Optimal concentration should be evaluated by serial dilutions.

PURIFICATION

Antigen Immunoaffinity Purification

SHIP CONDITIONS

Ship on dry ice, freeze upon arrival

STORAGE CUSTOMER

Product should be stored at -70°C. Aliquot to avoid freeze/thaw cycles

STABILITY

Products are stable for one year from purchase when stored properly

REFERENCES

- [1] Leung D.W., Tompkins C.K., White T.; Molecular cloning of two alternatively spliced forms of human phosphatidic acid phosphatase cDNAs that are differentially expressed in normal and tumor cells.; DNA Cell Biol. 17:377-385(1998).
- [2] Roberts R., Sciorra V.A., Morris A.J.; Human type 2 phosphatidic acid phosphohydrolases. Substrate specificity of the type 2a, 2b, and 2c enzymes and cell surface activity of the 2a isoform.; J. Biol. Chem. 273:22059-22067(1998).
- [3] Hooks S.B., Ragan S.P., Lynch K.R.; Identification of a novel human phosphatidic acid phosphatase type 2 isoform.; FEBS Lett. 427:188-192(1998).
- [4] Kalnine N., Chen X., Rolfs A., Halleck A., Hines L., Eisenstein S., Koundinya M., Raphael J., Moreira D., Kelley T., LaBaer J., Lin Y., Phelan M., Farmer A.; Cloning of human full-length CDSs in BD Creator(TM) system donor vector.; Submitted (MAY-2003) to the EMBL/GenBank/DBJ databases.
- [5] Strausberg R.L., et al Generation and initial analysis of more than 15,000 full-length human and mouse cDNA sequences.; Proc. Natl. Acad. Sci. U.S.A. 99:16899-16903(2002).

PRODUCT SPECIFIC REFERENCES