



SZABO SCANDIC

Part of Europa Biosite

Produktinformation



Forschungsprodukte & Biochemikalien



Zellkultur & Verbrauchsmaterial



Diagnostik & molekulare Diagnostik



Laborgeräte & Service

Weitere Information auf den folgenden Seiten!
See the following pages for more information!



Lieferung & Zahlungsart

siehe unsere [Liefer- und Versandbedingungen](#)

Zuschläge

- Mindermengenzuschlag
- Trockeneiszuschlag
- Gefahrgutzuschlag
- Expressversand

SZABO-SCANDIC HandelsgmbH

Quellenstraße 110, A-1100 Wien

T. +43(0)1 489 3961-0

F. +43(0)1 489 3961-7

mail@szabo-scandic.com

www.szabo-scandic.com

[linkedin.com/company/szaboscandic](https://www.linkedin.com/company/szaboscandic) 



Autotaxin . Rabbit Polyclonal Antibody

EctonucleotAutotaxin (ATX), a tumor cell motility- stimulating protein is an ecto/exo-enzyme with significant homology to the plasma cell membrane differentiation antigen PC-1. ATX is a 99kDa core protein and may run as a 125-kDa glycoprotein when isolated from the

BACKGROUND

Autotaxin (ATX), a tumor cell motility- stimulating protein is an ecto/exo-enzyme with significant homology to the plasma cell membrane differentiation antigen PC-1. ATX is a 99kDa core protein and may run as a 125-kDa glycoprotein when isolated from the human melanoma cell line (A2058). ATX, like PC-1 can hydrolyze the type I phosphodiesterase substrate p-nitrophenyl thymidine-5'-monophosphate. Autotaxin has a novel motility- regulating function for this class of ecto/exo-enzymes.

ORDERING INFORMATION

CATALOG NUMBER

X1653P

SIZE

100 µg

FORM

Unconjugated

HOST/CLONE

Rabbit

FORMULATION

Provided as solution in phosphate buffered saline with 0.08% sodium azide

CONCENTRATION

See vial for concentration

ISOTYPE

IgG

APPLICATIONS

Western Blot, Enzyme Immunoassay

SPECIES REACTIVITY

Human

ACCESSION NUMBER

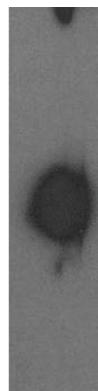
Human Q13822

IMMUNOGEN

Synthetic peptide derived from the autotaxin protein

Western blot analysis using autotaxin antibody on human brain lysate.

MW 99-



POSITIVE CONTROL/TISSUE EXPRESSION

Human brain lysate (Cat. No. X1633C)

COMMENTS

Antibody can be used for Western blotting (5-10 μ g/ml) and EIA. Optimal concentration should be evaluated by serial dilutions.

PURIFICATION

Ammonium Sulfate Precipitation

SHIP CONDITIONS

Ship at ambient temperature, freeze upon arrival

STORAGE CUSTOMER

Product should be stored at -20°C. Aliquot to avoid freeze/thaw cycles

STABILITY

Products are stable for one year from purchase when stored properly

REFERENCES

[1] Murata J., Lee H.Y., Clair T., Krutzsch H.C., Arestad A.A., Sobel M.E., Liotta L.A., Stracke M.L.; cDNA cloning of the human tumor motility-stimulating protein, autotaxin, reveals a homology with phosphodiesterases.; J. Biol. Chem. 269:30479-30484(1994).

[2] Lee H.Y., Murata J., Clair T., Polymeropoulos M.H., Torres R., Manrow R.E., Liotta L.A., Stracke M.L.; Cloning, chromosomal localization, and tissue expression of autotaxin from human teratocarcinoma cells.; Biochem. Biophys. Res. Commun. 218:714-719(1996).

[3] Kawagoe H., Soma O., Goji J., Nishimura N., Narita M., Inazawa J., Nakamura H., Sano K.; Molecular cloning and chromosomal assignment of the human brain-type phosphodiesterase I/nucleotide.; Genomics 30:380-384(1995).

[4] Strausberg R.L., et al Generation and initial analysis of more than 15,000 full-length human and mouse cDNA sequences.; Proc. Natl. Acad. Sci. U.S.A. 99:16899-16903(2002).

PRODUCT SPECIFIC REFERENCES