



# SZABO SCANDIC

Part of Europa Biosite

## Produktinformation



Forschungsprodukte & Biochemikalien



Zellkultur & Verbrauchsmaterial



Diagnostik & molekulare Diagnostik



Laborgeräte & Service

Weitere Information auf den folgenden Seiten!  
See the following pages for more information!



### Lieferung & Zahlungsart

siehe unsere [Liefer- und Versandbedingungen](#)

### Zuschläge

- Mindermengenzuschlag
- Trockeneiszuschlag
- Gefahrgutzuschlag
- Expressversand

### SZABO-SCANDIC HandelsgmbH

Quellenstraße 110, A-1100 Wien

T. +43(0)1 489 3961-0

F. +43(0)1 489 3961-7

[mail@szabo-scandic.com](mailto:mail@szabo-scandic.com)

[www.szabo-scandic.com](http://www.szabo-scandic.com)

[linkedin.com/company/szaboscandic](https://www.linkedin.com/company/szaboscandic) 

## Ceramide Glycosyltransferase. Rabbit Polyclonal Antibody

Glucosylceramide synthase, GCS, UDP glucose N-acylsphingosine D glucosyltransferase, GLCT-1, UDP glucose ceramide glucosyltransferase

### BACKGROUND

May serve as a flippase as well as a glucosyltransferase that transfers glucose to ceramide. It Catalyzes; UDP-glucose + N-acylsphingosine = UDP + D-glucosyl-N-acylsphingosine. Ceramide Glycosyltransferase is the first step in the Glycosphingolipid synthesis; first glycosylation step. Glucosylceramide synthase (GlcT) and lactosylceramide synthase (GalT) are key enzymes for the synthesis of major glycosphingolipids of vertebrates.

### ORDERING INFORMATION

**CATALOG NUMBER**

X1700P

**SIZE**

100 µg

**FORM**

Unconjugated

**HOST/CLONE**

Rabbit

**FORMULATION**

Provided as solution in phosphate buffered saline with 0.08% sodium azide

**CONCENTRATION**

See vial for concentration

**ISOTYPE**

N/A

**APPLICATIONS**

Western Blot, ELISA

**SPECIES REACTIVITY**

Human

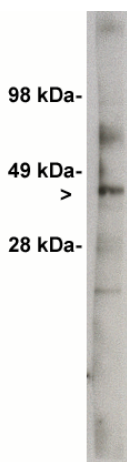
**ACCESSION NUMBER**

Human Q16739

### IMMUNOGEN

Synthetic peptide derived from human ceramide glycosyltransferase protein.

Western blot analysis using Ceramide Glycosyltransferase antibody (X1700P) on 7 µg of rat kidney lysate. Antibody used at 1 µg/ml. Visualized using Pierce West Femto substrate system. Secondary used at 1:75k dilution. Exposure for 60 seconds.



**POSITIVE CONTROL/TISSUE EXPRESSION**

Found in all tissues examined.

**COMMENTS**

Antibody can be used for Western blotting (5-10 $\mu$ g/ml) and ELISA. Other applications not yet tested. Optimal concentration should be evaluated by serial dilutions.

**PURIFICATION**

Ammonium Sulfate Precipitation

**SHIP CONDITIONS**

Ship at ambient temperature, freeze upon arrival

**STORAGE CUSTOMER**

Product should be stored at -20°C. Aliquot to avoid freeze/thaw cycles

**STABILITY**

Products are stable for one year from purchase when stored properly

**REFERENCES**

1. Expression cloning of a cDNA for human ceramide glucosyltransferase that catalyzes the first glycosylation step of glycosphingolipid synthesis.; Ichikawa S., Sakiyama H., Suzuki G., Hidari K.I.-P., Hirabayashi Y.; Proc. Natl. Acad. Sci. U.S.A. 93:4638-4643(1996).

2. van Vlerken, L.E., et al. 'Modulation of Intracellular Ceramide Using Polymeric Nanoparticles to Overcome Multidrug Resistance in Cancer.' Cancer Res., 67, 4843-4850, (2007).

**PRODUCT SPECIFIC REFERENCES**

1. D'Angelo, G., et al, 'Glycosphingolipid synthesis requires FAPP2 transfer of glucosylceramide.' Nature 2007, 449, , 62-67