



SZABO SCANDIC

Part of Europa Biosite

Produktinformation



Forschungsprodukte & Biochemikalien



Zellkultur & Verbrauchsmaterial



Diagnostik & molekulare Diagnostik



Laborgeräte & Service

Weitere Information auf den folgenden Seiten!
See the following pages for more information!



Lieferung & Zahlungsart

siehe unsere [Liefer- und Versandbedingungen](#)

Zuschläge

- Mindermengenzuschlag
- Trockeneiszuschlag
- Gefahrgutzuschlag
- Expressversand

SZABO-SCANDIC HandelsgmbH

Quellenstraße 110, A-1100 Wien

T. +43(0)1 489 3961-0

F. +43(0)1 489 3961-7

mail@szabo-scandic.com

www.szabo-scandic.com

[linkedin.com/company/szaboscandic](https://www.linkedin.com/company/szaboscandic) 

Sphingomyelin Synthase 1 (Peptide as antigen). Rabbit Polyclonal Antibody

Phosphatidylcholine:ceramide cholinephosphotransferase 1 Transmembrane protein 23, Sphingomyelin synthase 1, Mob protein

BACKGROUND

A bidirectional lipid cholinephosphotransferases capable of converting phosphatidylcholine (PC) and ceramide to sphingomyelin (SM) and diacylglycerol (DAG) and the inverse reaction. Direction is dependent on the relative concentrations of DAG and ceramide as phosphocholine acceptors. Directly and specifically recognizes the choline head group on the substrate. Also requires two fatty chains on the choline-P donor molecule in order to be recognized efficiently as a substrate. May not function strictly as a SM synthase. Inhibited by bacterial PC-phospholipase C inhibitor D609. Localized to Golgi apparatus; Golgi membrane; multi-pass membrane protein. Possibly present on Brain, heart, kidney, liver, muscle and stomach.

ORDERING INFORMATION

CATALOG NUMBER

X1701P

SIZE

100 μ g

FORM

Unconjugated

HOST/CLONE

Rabbit

FORMULATION

Purified IgG in phosphate buffered saline, pH 7.4

CONCENTRATION

See vial for concentration

ISOTYPE

APPLICATIONS

ELISA, Western Blot

SPECIES REACTIVITY

Human, Mouse

ACCESSION NUMBER

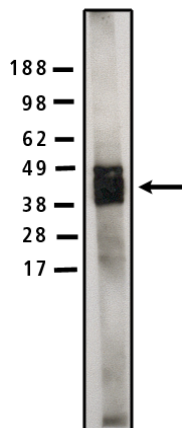
Human 49208

IMMUNOGEN

Synthetic peptide derived from the mouse sphingomyelin synthase 1 protein

Legend:

Western blot analysis using SMS1 antibody (Cat. No. X1701P) on human brain lysate (10 μ g/lane) at a concentration of 5 μ g/ml. Secondary antibody (Cat. No. X1207M) used at 1:75k dilution and visualized using Pierce West Femto substrate



POSITIVE CONTROL/TISSUE EXPRESSION

Brain, heart, kidney, liver, muscle and stomach.

COMMENTS

Antibody can be used for Western blotting (5-10 $\mu\text{g/ml}$). Optimal concentration should be evaluated by serial dilutions.

PURIFICATION**SHIP CONDITIONS**

Ship at ambient temperature, freeze upon arrival

STORAGE CUSTOMER

Product should be stored at -20°C . Aliquot to avoid freeze/thaw cycles

STABILITY

Products are stable for one year from purchase when stored properly

REFERENCES

1. Huitema K, van den Dikkenberg J, Brouwers JF, Holthuis JC Identification of a family of animal sphingomyelin synthases. EMBO J. 2004 Jan 14;23(1):33-44. Epub 2003 Dec 18.

PRODUCT SPECIFIC REFERENCES