



SZABO SCANDIC

Part of Europa Biosite

Produktinformation



Forschungsprodukte & Biochemikalien



Zellkultur & Verbrauchsmaterial



Diagnostik & molekulare Diagnostik



Laborgeräte & Service

Weitere Information auf den folgenden Seiten!
See the following pages for more information!



Lieferung & Zahlungsart

siehe unsere [Liefer- und Versandbedingungen](#)

Zuschläge

- Mindermengenzuschlag
- Trockeneiszuschlag
- Gefahrgutzuschlag
- Expressversand

SZABO-SCANDIC HandelsgmbH

Quellenstraße 110, A-1100 Wien

T. +43(0)1 489 3961-0

F. +43(0)1 489 3961-7

mail@szabo-scandic.com

www.szabo-scandic.com

[linkedin.com/company/szaboscandic](https://www.linkedin.com/company/szaboscandic) 

Sphingomyelin Synthase 2 (Peptide as antigen). Rabbit Polyclonal Antibody

Phosphatidylcholine:ceramide cholinephosphotransferase 2, Sphingomyelin synthase 2

BACKGROUND

Sphingomyelin (SM) is a major component of animal plasma membranes. Its production involves the transfer of phosphocholine from phosphatidylcholine and then onto ceramide. This also yields diacylglycerol as a side product. The reaction is catalysed by SM synthase, an important enzyme in the regulation of diacylglycerol and ceramide as anti- and proapoptotic stimuli. SM synthesis occurs in the lumen of the Golgi as well as on or at the cell surface. It is uncertain which SM enzyme forms are present at these different cellular locations. Human, mouse and *Caenorhabditis elegans* genomes each contain at least two different SM synthase (SMS) genes. Human SMS1 is localised to the Golgi, SMS2 resides primarily at the plasma membrane.

ORDERING INFORMATION

CATALOG NUMBER

X1703P

SIZE

100 µg

FORM

Unconjugated

HOST/CLONE

Rabbit

FORMULATION

Purified IgG in phosphate buffered saline, pH 7.4

CONCENTRATION

See vial for concentration

ISOTYPE

IgG

APPLICATIONS

Western Blot, ELISA

SPECIES REACTIVITY

Human

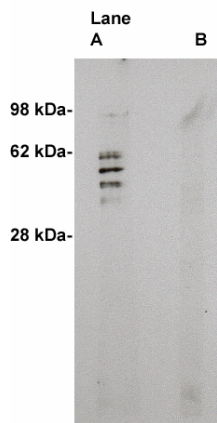
ACCESSION NUMBER

Human Q8NHU3

IMMUNOGEN

Synthetic peptide derived from the human sphingomyelin synthase 2 protein.

Western blot on human brain lysate (10 µg/lane) using Exalpha's X2059P antibody to Sphingomyelin Synthase 2 (0.5 µg/ml). Lane A] 1 µg/ml antibody alone, lane B] antibody plus 3 µg blocking peptide. Blot was developed with Pierce's Super Sytem West Femto - 1 minute exposure.



POSITIVE CONTROL/TISSUE EXPRESSION

Brain, heart, kidney, liver, muscle and stomach.

COMMENTS

Antibody can be used for Western blotting (5-10 μ g/ml). Optimal concentration should be evaluated by serial dilutions.

PURIFICATION

Ammonium Sulfate Precipitation

SHIP CONDITIONS

Ship at ambient temperature, freeze upon arrival

STORAGE CUSTOMER

Product should be stored at -20°C. Aliquot to avoid freeze/thaw cycles

STABILITY

Products are stable for one year from purchase when stored properly

REFERENCES

1. Huitema K, van den Dikkenberg J, Brouwers JF, Holthuis JC Identification of a family of animal sphingomyelin synthases. EMBO J. 2004 Jan 14;23(1):33-44. Epub 2003 Dec 18.

PRODUCT SPECIFIC REFERENCES