



SZABO SCANDIC

Part of Europa Biosite

Produktinformation



Forschungsprodukte & Biochemikalien



Zellkultur & Verbrauchsmaterial



Diagnostik & molekulare Diagnostik



Laborgeräte & Service

Weitere Information auf den folgenden Seiten!
See the following pages for more information!



Lieferung & Zahlungsart

siehe unsere [Liefer- und Versandbedingungen](#)

Zuschläge

- Mindermengenzuschlag
- Trockeneiszuschlag
- Gefahrgutzuschlag
- Expressversand

SZABO-SCANDIC HandelsgmbH

Quellenstraße 110, A-1100 Wien

T. +43(0)1 489 3961-0

F. +43(0)1 489 3961-7

mail@szabo-scandic.com

www.szabo-scandic.com

[linkedin.com/company/szaboscandic](https://www.linkedin.com/company/szaboscandic) 

NPDC-1. Mouse Monoclonal Antibody

BACKGROUND

The discovery of NPDC-1 (neuronal proliferation, differentiation and control protein 1) was the result of a study of genes that were preferentially expressed in immortalized neural precursor cell lines at the onset of contact inhibition of proliferation and subsequent differentiation. It was further found that transfection of transformed cells with NPDC-1 led to increased doubling times and suppression of many characteristics of transformation. NPDC-1 is differentially expressed in brain and lung and has been shown to interact directly with the transcription factor E2F-1 as well as D-type cyclins and cdk2. NPDC-1 has been identified as a modulator of transcriptional events mediated by retinoic acid and the protein level and activity of NPDC-1 have been shown to be regulated by phosphorylation mediated proteasomal degradation.

ORDERING INFORMATION

CATALOG NUMBER

X1727M

SIZE

100 μ g

FORM

Unconjugated

HOST/CLONE

Mouse Clone 16E4

FORMULATION

20 mM sodium phosphate, 150 mM sodium chloride, 50% glycerol, pH 7.5, 3mM sodium azide

CONCENTRATION

See vial for concentration

ISOTYPE

IgG1

APPLICATIONS

Western Blot

SPECIES REACTIVITY

Human, Mouse, Rat

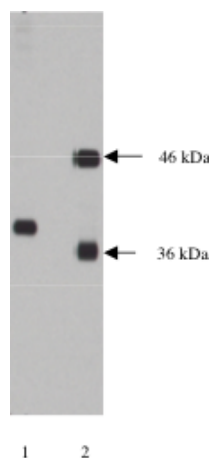
ACCESSION NUMBER

Human Q8WXX4

IMMUNOGEN

Hybridoma produced by the fusion of splenocytes from mice immunized with a synthetic peptide derived from human NPDC-1 protein and mouse myeloma cells.

Lane 1. Western blot using anti-NPDC-1 (Cat # X1727M) on 10 μ g lysate transfected with NPDC-1 protein at a dilution of 1 μ g/ml, detected with Supersignal West Pico Substrate, 15 second exposure. Lane 2 probed with anti-Rem and anti-alpha SNAP antibodies.



POSITIVE CONTROL/TISSUE EXPRESSION

Brain tissue lysate (mouse and rat tested, human not yet tested).

COMMENTS

Antibody can be used for Western blotting (1:1000 dilution). Optimal concentration should be evaluated by serial dilutions.

PURIFICATION**SHIP CONDITIONS**

Ship at ambient temperature, freeze upon arrival

STORAGE CUSTOMER

Product should be stored at -20°C. Aliquot to avoid freeze/thaw cycles

STABILITY

Products are stable for one year from purchase when stored properly

REFERENCES

1. Spencer, M.L., et al. 'NPDC-1, a novel regulator of neuronal proliferation, is degraded by the ubiquitin/proteasome system through a PEST degradation motif.' *J. Biol. Chem.* (2004), 279, 37069-37078
2. Evrard, C. & Rouget P. 'Subcellular localization of neural-specific NPDC-1 protein.' *J Neurosci Res* (2005), 79, 747-755
3. Sansal, I., et al. 'NPDC-1, a regulator of neural cell proliferation and differentiation, interacts with E2F-1, reduces its binding to DNA and modulates its transcriptional activity.' *Oncogene* (2000), 19, 5000-5009

PRODUCT SPECIFIC REFERENCES