



SZABO SCANDIC

Part of Europa Biosite

Produktinformation



Forschungsprodukte & Biochemikalien



Zellkultur & Verbrauchsmaterial



Diagnostik & molekulare Diagnostik



Laborgeräte & Service

Weitere Information auf den folgenden Seiten!
See the following pages for more information!



Lieferung & Zahlungsart

siehe unsere [Liefer- und Versandbedingungen](#)

Zuschläge

- Mindermengenzuschlag
- Trockeneiszuschlag
- Gefahrgutzuschlag
- Expressversand

SZABO-SCANDIC HandelsgmbH

Quellenstraße 110, A-1100 Wien

T. +43(0)1 489 3961-0

F. +43(0)1 489 3961-7

mail@szabo-scandic.com

www.szabo-scandic.com

[linkedin.com/company/szaboscandic](https://www.linkedin.com/company/szaboscandic) 

Caspase-2 Precursor (NT). Rabbit Antigen Immunoaffinity Purified Polyclonal
ICH-1, Nedd2 (NT)

BACKGROUND

Caspases are a family of cysteine proteases that can be divided into the apoptotic and inflammatory caspase subfamilies. Unlike the apoptotic caspases, members of the inflammatory subfamily are generally not involved in cell death but are associated with the immune response to microbial pathogens (reviewed in 1 and 2). Members of this subfamily include caspase-1, -4, -5, and -12 and can activate proinflammatory cytokines such as IL-1 and IL-18 (3,4). Although phylogenetically similar to this subfamily, Caspase-2 is thought to be involved in stress-induced apoptosis (5). Caspase-2 has two major isoforms; overexpression on the long form results in apoptosis while that of the short form suppresses cell death (6).

ORDERING INFORMATION

CATALOG NUMBER

X1783P

SIZE

100 µg

FORM

Affinity Purified

HOST/CLONE

Rabbit

FORMULATION

Provided as solution in phosphate buffered saline with 0.02% sodium azide

CONCENTRATION

See vial for concentration

ISOTYPE

IgG

APPLICATIONS

Western Blot, Immunohistochemistry

SPECIES REACTIVITY

Human, Mouse

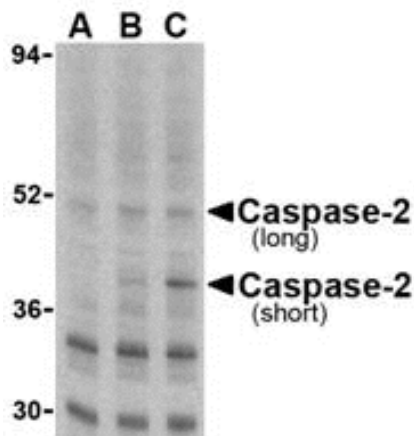
ACCESSION NUMBER

Human P42575

IMMUNOGEN

Rabbit polyclonal Caspase-2 antibody was raised against a 16 amino acid peptide from the amino-terminus of human Caspase-2.

Western blot analysis of caspase-2 in Ramos cells with caspase-2 antibody at (A) 0.5, (B) 1, and (C) 2 µg/ml.



POSITIVE CONTROL/TISSUE EXPRESSION

Expressed in larger amounts in the embryonic lung, liver and kidney than in the heart and brain. In the adults higher level expression is seen in the placenta, lung, kidney, pancreas than in the heart, brain, liver and skeletal muscle.

COMMENTS

Caspase-2 antibody can be used for the detection of caspase-2 by Western blot at 1 ug/ml. Depending on cell lines or tissues used, other cleavage products may be observed. Optimal concentration should be evaluated by serial dilutions.

PURIFICATION

Antigen Immunoaffinity Purification

SHIP CONDITIONS

Ship at ambient temperature, freeze upon arrival

STORAGE CUSTOMER

Product should be stored at -20°C. Aliquot to avoid freeze/thaw cycles

STABILITY

Products are stable for one year from purchase when stored properly

REFERENCES

- 1) Martinon F and Tschopp J. Inflammatory caspases: linking an intracellular innate immune system to autoinflammatory diseases. *Cell* 2004; 117:561-74
- 2) Zhivotovsky B and Orrenius S. Caspase-2 function in response to DNA damage. *Biochim. Biophys. Res. Comm.* 2005; 331:859-67.
- 3) Kuida K, Lippke JA, Ku G, et al. Altered cytokine export and apoptosis in mice deficient in interleukin-1 converting enzyme *Science* 1995; 267:2000-3
- 4) Gracie JA, Robertson SE, and McInnes IB. Interleukin-18. *J. Leukoc. Biol.* 2003; 73:213-224.

PRODUCT SPECIFIC REFERENCES