



SZABO SCANDIC

Part of Europa Biosite

Produktinformation



Forschungsprodukte & Biochemikalien



Zellkultur & Verbrauchsmaterial



Diagnostik & molekulare Diagnostik



Laborgeräte & Service

Weitere Information auf den folgenden Seiten!
See the following pages for more information!



Lieferung & Zahlungsart

siehe unsere [Liefer- und Versandbedingungen](#)

Zuschläge

- Mindermengenzuschlag
- Trockeneiszuschlag
- Gefahrgutzuschlag
- Expressversand

SZABO-SCANDIC HandelsgmbH

Quellenstraße 110, A-1100 Wien

T. +43(0)1 489 3961-0

F. +43(0)1 489 3961-7

mail@szabo-scandic.com

www.szabo-scandic.com

[linkedin.com/company/szaboscandic](https://www.linkedin.com/company/szaboscandic) 

Clusterin. Rabbit Polyclonal Antibody

Clusterin; Complement cytolysis inhibitor, CLI, Apolipoprotein J, ApoJ

BACKGROUND

Clusterin, also known as Apolipoprotein J (ApoJ), is a ubiquitous multifunctional glycoprotein that can interact with a broad spectrum of molecules such as complement components, various receptors, and the Alzheimer's b-amyloid peptide (1). Clusterin expression is increased in Alzheimer's disease brain tissue and clusterin-immunoreactive amyloid plaques are found associated with phospho-tau-positive dystrophic neurites (2) and it has been suggested that clusterin facilitates the conversion of diffuse b-amyloid deposits into amyloid and enhances tau phosphorylation in neurites around these plaques. Other reports show that clusterin expression is decreased in proliferating cells and is upregulated in quiescent and senescent cells, suggesting that it may also play a role in aging and tumorigenesis suppression (3). Clusterin exists in at least two distinct isoforms.

ORDERING INFORMATION

CATALOG NUMBER

X1788P

SIZE

100 µg

FORM

Unconjugated

HOST/CLONE

Rabbit

FORMULATION

Provided as solution in phosphate buffered saline with 0.02% sodium azide

CONCENTRATION

See vial for concentration

ISOTYPE

IgG

APPLICATIONS

Western Blot

SPECIES REACTIVITY

Human

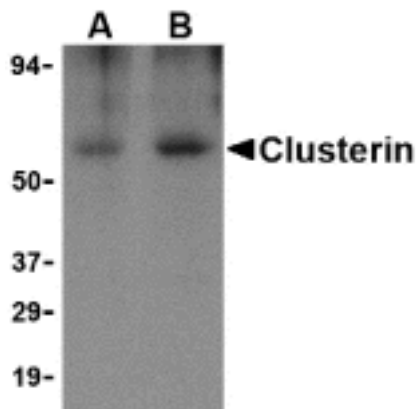
ACCESSION NUMBER

Human P10909

IMMUNOGEN

Rabbit polyclonal Clusterin antibody was raised recombinant human Clusterin isoform 1.

Western blot analysis of Clusterin in human brain tissue lysate with Clusterin body at (A) 0.5 and (B) 1 µg/ml.



POSITIVE CONTROL/TISSUE EXPRESSION

Human Brain Tissue Lysate used as positive control.

Clusterin is known to be expressed in a variety of tissues and it seems to be able to bind to cells, membranes and hydrophobic proteins.

COMMENTS

Clusterin antibody can be used for the detection of Clusterin by Western blot at 0.5 – 1 ug/ml.

PURIFICATION

Antigen Immunoaffinity Purification

SHIP CONDITIONS

Ship at ambient temperature, freeze upon arrival

STORAGE CUSTOMER

Product should be stored at -20°C. Aliquot to avoid freeze/thaw cycles

STABILITY

Products are stable for one year from purchase when stored properly

REFERENCES

- 1) Calero M, Rostagno A, Frangione B, et al. Clusterin and Alzheimer's disease. *Subcell. Biochem.* 2005; 38:273-98.
- 2) Martin-Rehrmann MD, Hoe HS, Capuani EM, et al. Association of apolipoprotein J-positive beta-amyloid plaques with dystrophic neurites in Alzheimer's disease brain. *Neurotox. Res.* 2005; 7:231-42
- 3) Trougakos IP and Gonos ES. Clusterin/Apolipoprotein J in human aging and cancer. *Int. J. Biochem. Cell Biol.* 2002; 34:1430-48.
- 4) Martinon F and Tschopp J. NLRs join TLRs as innate sensors of pathogens. *TRENDS Imm.* 2005; 26:447-54

PRODUCT SPECIFIC REFERENCES