



SZABO SCANDIC

Part of Europa Biosite

Produktinformation



Forschungsprodukte & Biochemikalien



Zellkultur & Verbrauchsmaterial



Diagnostik & molekulare Diagnostik



Laborgeräte & Service

Weitere Information auf den folgenden Seiten!
See the following pages for more information!



Lieferung & Zahlungsart

siehe unsere [Liefer- und Versandbedingungen](#)

Zuschläge

- Mindermengenzuschlag
- Trockeneiszuschlag
- Gefahrgutzuschlag
- Expressversand

SZABO-SCANDIC HandelsgmbH

Quellenstraße 110, A-1100 Wien

T. +43(0)1 489 3961-0

F. +43(0)1 489 3961-7

mail@szabo-scandic.com

www.szabo-scandic.com

[linkedin.com/company/szaboscandic](https://www.linkedin.com/company/szaboscandic) 

Collapsin response mediator protein 1 (CT). Rabbit Antigen Immunoaffinity Purified Polyclonal
Collapsin response mediator protein 1 / DRP-1 / dihydropyrimidinase-related protein 1

BACKGROUND

Collapsin-response mediator proteins (CRMPs) are highly expressed in the developing brain where they play major roles in axonal outgrowth, neurite differentiation, and apoptosis (1). Their continued expression in areas of high synaptic remodeling such as the cerebellum, hippocampus, and the olfactory system suggests that these proteins may also be involved in adult brain plasticity (2). CRMP-1 was initially identified as a dihydro-pyrimidinase expressed exclusively in brain (3); later studies have shown that it is involved with neurotrophin (NT) 3-induced neurite formation and outgrowth (4). CRMP-1 localization switches from axonal to somatodendritic when neurons reach functional maturity, suggesting that it is involved in early neuronal differentiation as well as in later processes related to the survival or death of the newly generated neurons (5).

ORDERING INFORMATION

CATALOG NUMBER

X1789P

SIZE

100 µg

FORM

Affinity Purified

HOST/CLONE

Rabbit

FORMULATION

Provided as solution in phosphate buffered saline with 0.02% sodium azide

CONCENTRATION

See vial for concentration

ISOTYPE

IgG

APPLICATIONS

Western Blot

SPECIES REACTIVITY

Human, Mouse, Rat

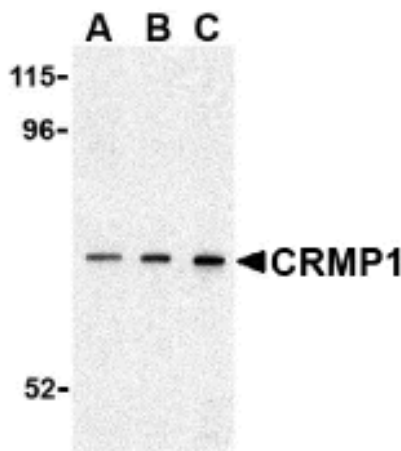
ACCESSION NUMBER

Human AAH07613

IMMUNOGEN

Rabbit polyclonal CRMP1 antibody was raised against a 15 amino acid peptide from near the carboxy terminus of human CRMP1.

Western blot analysis of CRMP1 in 3T3 cell lysate with CRMP1 antibody at (A) 0.5, (B) 1 and (C) 2 µg/ml.



POSITIVE CONTROL/TISSUE EXPRESSION

Tissue Specificity: Brain. Located in the cytoplasm

COMMENTS

CRMP1 antibody can be used for the detection of CRMP1 by Western blot at 0.5 - 1 μ g/ml. (Optimal dilution should be determined by user). 3T3 cell lysate can be used as positive control. CRMP1 antibody is human, mouse and rat reactive.

PURIFICATION

Antigen Immunoaffinity Purification

SHIP CONDITIONS

Ship at ambient temperature, freeze upon arrival

STORAGE CUSTOMER

Product should be stored at -20°C. Aliquot to avoid freeze/thaw cycles

STABILITY

Products are stable for one year from purchase when stored properly

REFERENCES

- 1) Charrier E, Reibel S, Rogemond V, et al. Collapsin response mediator proteins (CRMPs): involvement in nervous system development and adult neurodegenerative disorders. *Mol. Neurobiol.* 2003; 28:51-64.
- 2) Cameron HA and McKay RD. Adult neurogenesis produces a large pool of new granule cells in the dentate gyrus. *J. Comp. Neurol.* 2001; 435:406-417.
- 3) Hamajima N, Matsuda K, Sakata S, et al. A novel gene family defined by human dihydropyrimidinase and three related proteins with differential tissue distribution. *Gene.* 1996; 180:157-63.
- 4) Quach TT, Duchemin A-M, Rogemond V, et al. Involvement of collapsin response mediator proteins in the neurite extension induced by neurotrophins in dorsal root ganglion neurons. *Mol. Cell. Neurosci.* 2004; 25:433-43.

PRODUCT SPECIFIC REFERENCES

1. Nilsen, J., et al, Estradiol In Vivo Regulation of Brain Mitochondrial Proteome, *Journal of Neuroscience* 2007, 27, , 14069-14077