



# SZABO SCANDIC

Part of Europa Biosite

## Produktinformation



Forschungsprodukte & Biochemikalien



Zellkultur & Verbrauchsmaterial



Diagnostik & molekulare Diagnostik



Laborgeräte & Service

Weitere Information auf den folgenden Seiten!  
See the following pages for more information!



### Lieferung & Zahlungsart

siehe unsere [Liefer- und Versandbedingungen](#)

### Zuschläge

- Mindermengenzuschlag
- Trockeneiszuschlag
- Gefahrgutzuschlag
- Expressversand

### SZABO-SCANDIC HandelsgmbH

Quellenstraße 110, A-1100 Wien

T. +43(0)1 489 3961-0

F. +43(0)1 489 3961-7

[mail@szabo-scandic.com](mailto:mail@szabo-scandic.com)

[www.szabo-scandic.com](http://www.szabo-scandic.com)

[linkedin.com/company/szaboscandic](https://www.linkedin.com/company/szaboscandic) 

## Lymphocyte antigen 86 (IN)/MD-1. Rabbit Polyclonal Antibody

MD-1 (IN): Lymphocyte antigen 86

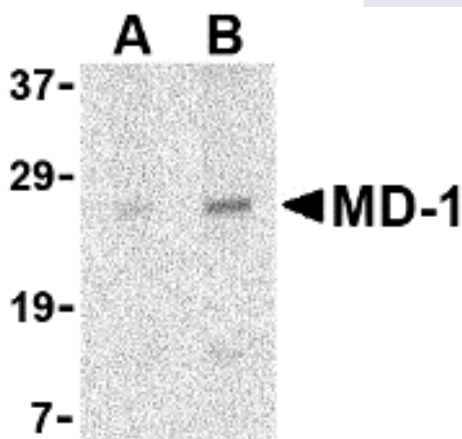
### BACKGROUND

Toll-like receptors (TLRs) are evolutionarily conserved pattern-recognition molecules that recognize different microbial products during infection and serve as an important link between the innate and adaptive immune responses. The signaling of these TLRs is kept under tight control by the expression of endogenous inhibiting proteins such as RP105, a recently identified homolog of TLR4. This protein, in association with MD-1, interacts with and inhibits the TLR4/MD-2 signaling pathway. While MD-2 can directly bind to LPS, one of the activating molecules of TLR4, the function of MD-1 is less well-known. It has been suggested however, that the RP105/MD-1 complex influences antibody production mediated by both TLR4/MD-2 and TLR2 receptor complexes.

### IMMUNOGEN

Rabbit polyclonal MD-1 antibody was raised against a 15 amino acid peptide from near the center of human MD-1.

Western blot analysis of MD-1 in Daudi cell lysate with MD-1 antibody at (A) 1 and (B) 2  $\mu\text{g/ml}$ .



### ORDERING INFORMATION

#### CATALOG NUMBER

X1801P

#### SIZE

100  $\mu\text{g}$

#### FORM

Unconjugated

#### HOST/CLONE

Rabbit

#### FORMULATION

Provided as solution in phosphate buffered saline with 0.02% sodium azide

#### CONCENTRATION

See vial for concentration

#### ISOTYPE

IgG

#### APPLICATIONS

Western Blot

#### SPECIES REACTIVITY

Human, Mouse, Rat

#### ACCESSION NUMBER

Human O95711

**POSITIVE CONTROL/TISSUE EXPRESSION**

May cooperate with CD180 and TLR4 to mediate the innate immune response to bacterial lipopolysaccharide (LPS) and cytokine production. Important for efficient CD180 cell surface expression. Highly expressed in B-cells, monocytes and tonsil.<sup>5</sup>

**COMMENTS**

MD-1 antibody can be used for the detection of MD-1 by Western blot at 1 – 2 ug/ml

**PURIFICATION**

Antigen Immunoaffinity Purification

**SHIP CONDITIONS**

Ship at ambient temperature, freeze upon arrival

**STORAGE CUSTOMER**

Product should be stored at -20°C. Aliquot to avoid freeze/thaw cycles

**STABILITY**

Products are stable for one year from purchase when stored properly

**REFERENCES**

- 1) Takeda K, Kaisho T, and Akira S. Toll-like receptors. *Annu. Rev. Immunol.* 2003; 21:335-76.
- 2) Divanovic S, Trompette A, Atabani SF, et al. Inhibition of TLR-4/MD-2 signaling by RP105/MD-1. *J. Endotoxin Res.* 2005; 11:363-8.
- 3) Tsuneyoshi N, Fukudome K, Kohara J, et al. The functional and structural properties of MD-2 required for liposaccharide binding are absent in MD-1. *J. Immunol.* 2005; 174:340-4.
- 4) Nagai Y, Kobayashi T, Motoi Y, et al. The radioprotective 105/MD-1 complex links TLR2 and TLR4/MD-2 in antibody response to microbial membranes. *J. Immunol.* 2005; 174:7043-9.
- 5) UniProtKB/Swiss-Prot entry O95711, <http://www.expasy.org/uniprot/O95711>, accessed January 29, 2007

**PRODUCT SPECIFIC REFERENCES**