



SZABO SCANDIC

Part of Europa Biosite

Produktinformation



Forschungsprodukte & Biochemikalien



Zellkultur & Verbrauchsmaterial



Diagnostik & molekulare Diagnostik



Laborgeräte & Service

Weitere Information auf den folgenden Seiten!
See the following pages for more information!



Lieferung & Zahlungsart

siehe unsere [Liefer- und Versandbedingungen](#)

Zuschläge

- Mindermengenzuschlag
- Trockeneiszuschlag
- Gefahrgutzuschlag
- Expressversand

SZABO-SCANDIC HandelsgmbH

Quellenstraße 110, A-1100 Wien

T. +43(0)1 489 3961-0

F. +43(0)1 489 3961-7

mail@szabo-scandic.com

www.szabo-scandic.com

[linkedin.com/company/szaboscandic](https://www.linkedin.com/company/szaboscandic) 



Lymphocyte antigen 96/MD-2 (IN). Rabbit Polyclonal Antibody
ESOP-1

BACKGROUND

MD-2 is a member of the Toll/interleukin-1 receptor (TIR) family, a group of proteins that include the Toll-like receptors (TLRs) (1-3). TLRs are signaling molecules that recognize different pathogen-associated molecular patterns (PAMPs) and serve as an important link between the innate and adaptive immune responses (4). TLR4, the major signaling receptor for lipopolysaccharide (LPS), requires the binding of MD-2 to its extracellular region for maximal response to LPS (5,6). The specificity of this response is determined by the species of MD-2; e.g., human MD-2 can cause mouse TLR4 to react to LPS analogs that are normally antagonistic to human but not mouse TLR4 (7).

ORDERING INFORMATION

CATALOG NUMBER
X1802P

SIZE
100 µg

FORM
Unconjugated

HOST/CLONE
Rabbit

FORMULATION
Provided as solution in phosphate buffered saline with 0.02% sodium azide

CONCENTRATION
See vial for concentration

ISOTYPE
IgG

APPLICATIONS
Western Blot, Immunohistochemistry (Paraffin sections)

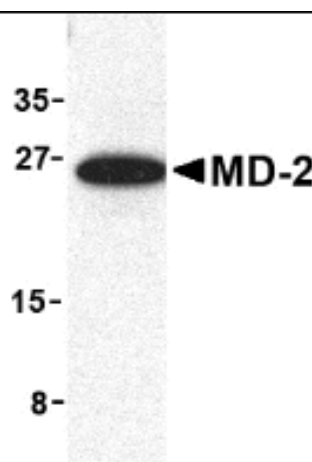
SPECIES REACTIVITY
Human, Mouse, Rat

ACCESSION NUMBER
Human Q9Y6Y9

IMMUNOGEN

Rabbit polyclonal MD-2 antibody was raised against a peptide corresponding to amino acids near the middle region of human MD-2.

Western blot analysis of MD-2 in mouse spleen cell lysate with MD-2 antibody at 1 µg/ml.



POSITIVE CONTROL/TISSUE EXPRESSION

Found in the liver and spleen, the secreted protein Lymphocyte antigen 96/MD-2 cooperates with TLR4 in the innate immune response to bacterial lipopolysaccharide (LPS), and with TLR2 in the response to cell wall components from Gram-positive and Gram-negative bacteria.

COMMENTS

MD-2 (IN) antibody can be used for detection of MD-2 by Western blot at 0.5 to ug/ml.

PURIFICATION

Antigen Immunoaffinity Purification

SHIP CONDITIONS

Ship at ambient temperature, freeze upon arrival

STORAGE CUSTOMER

Product should be stored at -20°C. Aliquot to avoid freeze/thaw cycles

STABILITY

Products are stable for one year from purchase when stored properly

REFERENCES

- 1) O'Neill LAJ, Fitzgerald FA, and Bowie AG. The Toll-IL-1 receptor adaptor family grows to five members. Trends in Imm. 2003; 24:286-9.
- 2) Vogel SN, Fitzgerald KA, and Fenton MJ. TLRs: differential adapter utilization by toll-like receptors mediates TLR-specific patterns of gene expression. Mol. Interv. 2003; 3:466-77.
- 3) Makeda K, Kaisho T, and Akira S. Toll-like receptors. Annu. Rev. Immunol. 2003; 21:335-76.
- 4) Janeway CA Jr and Medzhitov R. Innate immune recognition. Annu. Rev. Immunol. 2002; 20:197-216.
- 5) UniProtKB/Swiss-Prot entry Q9Y6Y9, <http://www.expasy.org/uniprot/Q9Y6Y9>, Accessed January 9, 2007.

PRODUCT SPECIFIC REFERENCES