



SZABO SCANDIC

Part of Europa Biosite

Produktinformation



Forschungsprodukte & Biochemikalien



Zellkultur & Verbrauchsmaterial



Diagnostik & molekulare Diagnostik



Laborgeräte & Service

Weitere Information auf den folgenden Seiten!
See the following pages for more information!



Lieferung & Zahlungsart

siehe unsere [Liefer- und Versandbedingungen](#)

Zuschläge

- Mindermengenzuschlag
- Trockeneiszuschlag
- Gefahrgutzuschlag
- Expressversand

SZABO-SCANDIC HandelsgmbH

Quellenstraße 110, A-1100 Wien

T. +43(0)1 489 3961-0

F. +43(0)1 489 3961-7

mail@szabo-scandic.com

www.szabo-scandic.com

[linkedin.com/company/szaboscandic](https://www.linkedin.com/company/szaboscandic) 

Toll Interleukin 1 receptor adaptor protein (TIRAP) (CT). Rabbit Polyclonal Antibody
MyD88 adapter-like protein, Adaptor protein Wyatt

BACKGROUND

Toll-like receptors (TLRs) are signaling molecules that recognize different microbial products during infection and serve as an important link between the innate and adaptive immune responses (1-3). These proteins act through adaptor molecules such as TIRAP and MyD88 to activate various kinases and transcription factors (4,5). In TIRAP-deficient mice, TLR signaling in response to TLR2 ligands (using either TLR1 and TLR6 as co-receptors) is totally abolished, suggesting that MyD88 and TIRAP work together and are both required for TLR2 signaling (6). Furthermore, these mice are also resistant to the toxic effects of LPS and show defects in NF- κ B and MAP kinase activation, suggesting that TIRAP is also involved in TLR4 signaling (6,7) **Cat.No. 3157

ORDERING INFORMATION

CATALOG NUMBER

X1803P

SIZE

100 μ g

FORM

Unconjugated

HOST/CLONE

Rabbit

FORMULATION

Provided as solution in phosphate buffered saline with 0.02% sodium azide

CONCENTRATION

See vial for concentration

ISOTYPE

IgG

APPLICATIONS

Western Blot, Immunohistochemistry (paraffin)

SPECIES REACTIVITY

Human, Mouse, Rat

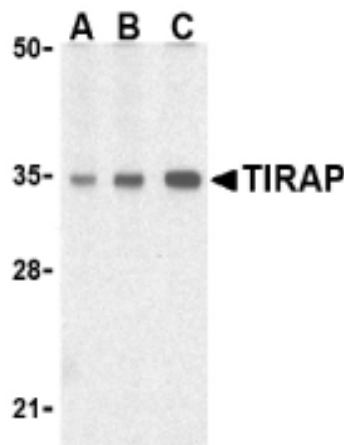
ACCESSION NUMBER

Human Q99JY1

IMMUNOGEN

Rabbit polyclonal TIRAP antibody was raised against a peptide corresponding to 15 amino acids near the C-terminus of mouse TIRAP.

Western blot analysis of TIRAP in human heart cell lysates with TIRAP antibody at (A) 0.5, (B) 1, and (C) 2 μ g/ml.



POSITIVE CONTROL/TISSUE EXPRESSION

Found in the cytoplasm and highly expressed in liver, kidney, spleen, skeletal muscle and heart. Also detected in peripheral blood leukocytes, lung, placenta, small intestine, thymus, colon and brain.

COMMENTS

TIRAP (CT) antibody can be used for detection of TIRAP by Western blot at 0.5 to 2 ug/ml.

PURIFICATION

Antigen Immunoaffinity Purification

SHIP CONDITIONS

Ship at ambient temperature, do not freeze, refrigerate upon arrival

STORAGE CUSTOMER

Product should be stored at -20°C. Aliquot to avoid freeze/thaw cycles

STABILITY

Products are stable for one year from purchase when stored properly

REFERENCES

- 1) Vogel SN, Fitzgerald KA, and Fenton MJ. TLRs: differential adapter utilization by toll-like receptors mediates TLR-specific patterns of gene expression. *Mol. Interv.* 2003; 3:466-77.
- 2) Takeda K, Kaisho T, and Akira S. Toll-like receptors. *Annu. Rev. Immunol.* 2003; 21:335-76.
- 3) Janeway CA Jr and Medzhitov R. Innate immune recognition. *Annu. Rev. Immunol.* 2002; 20:197-216.
- 4) O'Neill LAJ, Fitzgerald FA, and Bowie AG. The Toll-IL-1 receptor adaptor family grows to five members. *Trends in Imm.* 2003; 24:286-9.
- 5) UniProtKB/Swiss-Prot entry Q99JY1 <http://expasy.org/uniprot/Q99JY1>, Accessed January 29, 2007.

PRODUCT SPECIFIC REFERENCES