



# SZABO SCANDIC

Part of Europa Biosite

## Produktinformation



Forschungsprodukte & Biochemikalien



Zellkultur & Verbrauchsmaterial



Diagnostik & molekulare Diagnostik



Laborgeräte & Service

Weitere Information auf den folgenden Seiten!  
See the following pages for more information!



### Lieferung & Zahlungsart

siehe unsere [Liefer- und Versandbedingungen](#)

### Zuschläge

- Mindermengenzuschlag
- Trockeneiszuschlag
- Gefahrgutzuschlag
- Expressversand

### SZABO-SCANDIC HandelsgmbH

Quellenstraße 110, A-1100 Wien

T. +43(0)1 489 3961-0

F. +43(0)1 489 3961-7

[mail@szabo-scandic.com](mailto:mail@szabo-scandic.com)

[www.szabo-scandic.com](http://www.szabo-scandic.com)

[linkedin.com/company/szaboscandic](https://www.linkedin.com/company/szaboscandic) 

**Toll Interleukin 1 receptor adaptor protein (TIRAP) (IN). Rabbit Polyclonal Antibody**  
MyD88 adapter-like protein, Adaptor protein Wyatt

**BACKGROUND**

Toll-like receptors (TLRs) are signaling molecules that recognize different microbial products during infection and serve as an important link between the innate and adaptive immune responses (1-3). These proteins act through adaptor molecules such as TIRAP and MyD88 to activate various kinases and transcription factors (4,5). In TIRAP-deficient mice, TLR signaling in response to TLR2 ligands (using either TLR1 and TLR6 as co-receptors) is totally abolished, suggesting that MyD88 and TIRAP work together and are both required for TLR2 signaling (6). Furthermore, these mice are also resistant to the toxic effects of LPS and show defects in NF- $\kappa$ B and MAP kinase activation, suggesting that TIRAP is also involved in TLR4 signaling (6,7)

**ORDERING INFORMATION**

**CATALOG NUMBER**  
X1804P

**SIZE**  
100  $\mu$ g  
**FORM**  
Unconjugated

**HOST/CLONE**  
Rabbit

**FORMULATION**  
Provided as solution in phosphate buffered saline with 0.02% sodium azide

**CONCENTRATION**  
See vial for concentration

**ISOTYPE**  
IgG

**APPLICATIONS**  
Western Blot

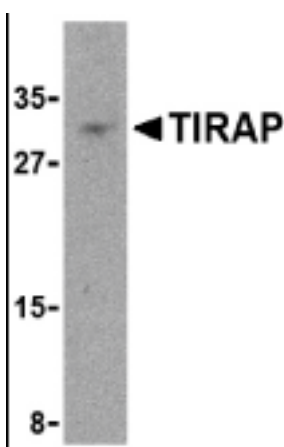
**SPECIES REACTIVITY**  
Human

**ACCESSION NUMBER**  
Human Q99JY1

**IMMUNOGEN**

Rabbit polyclonal TIRAP antibody was raised against a peptide corresponding to amino acids near the middle of human TIRAP.

Western blot analysis of TIRAP in MCF-7 cell lysate with TIRAP antibody (IN) at 4  $\mu$ g/ml.



**POSITIVE CONTROL/TISSUE EXPRESSION**

Found in the cytoplasm and highly expressed in liver, kidney, spleen, skeletal muscle and heart. Also detected in peripheral blood leukocytes, lung, placenta, small intestine, thymus, colon and brain.

**COMMENTS**

TIRAP (IN) antibody can be used for detection of TIRAP by Western blot at 4 ug/ml.

**PURIFICATION**

Antigen Immunoaffinity Purification

**SHIP CONDITIONS**

Ship at ambient temperature, freeze upon arrival

**STORAGE CUSTOMER**

Product should be stored at -20°C. Aliquot to avoid freeze/thaw cycles

**STABILITY**

Products are stable for one year from purchase when stored properly

**REFERENCES**

- 1) Vogel SN, Fitzgerald KA, and Fenton MJ. TLRs: differential adapter utilization by toll-like receptors mediates TLR-specific patterns of gene expression. *Mol. Interv.* 2003; 3:466-77.
- 2) Takeda K, Kaisho T, and Akira S. Toll-like receptors. *Annu. Rev. Immunol.* 2003; 21:335-76.
- 3) Janeway CA Jr and Medzhitov R. Innate immune recognition. *Annu. Rev. Immunol.* 2002; 20:197-216.
- 4) O'Neill LAJ, Fitzgerald FA, and Bowie AG. The Toll-IL-1 receptor adaptor family grows to five members. *Trends in Imm.* 2003; 24:286-9.
- 5) UniProtKB/Swiss-Prot entry Q99JY1, <http://expasy.org/uniprot/Q99JY1>, Accessed January 29, 2007.

**PRODUCT SPECIFIC REFERENCES**