



SZABO SCANDIC

Part of Europa Biosite

Produktinformation



Forschungsprodukte & Biochemikalien



Zellkultur & Verbrauchsmaterial



Diagnostik & molekulare Diagnostik



Laborgeräte & Service

Weitere Information auf den folgenden Seiten!
See the following pages for more information!



Lieferung & Zahlungsart

siehe unsere [Liefer- und Versandbedingungen](#)

Zuschläge

- Mindermengenzuschlag
- Trockeneiszuschlag
- Gefahrgutzuschlag
- Expressversand

SZABO-SCANDIC HandelsgmbH

Quellenstraße 110, A-1100 Wien

T. +43(0)1 489 3961-0

F. +43(0)1 489 3961-7

mail@szabo-scandic.com

www.szabo-scandic.com

[linkedin.com/company/szaboscandic](https://www.linkedin.com/company/szaboscandic) 

Toll-like Receptor Adaptor Protein (TIRP) (CT). Rabbit Polyclonal Antibody
TICAM2 protein, TIRAP3a, TIR-containing adapter molecule-2, Putative NFkB activating protein

BACKGROUND

TIRP is a member of the Toll/interleukin-1 receptor (TIR) family, a group of proteins that include the Toll-like receptors (TLRs) (1-3). TLRs are signaling molecules that recognize different pathogen-associated molecular patterns (PAMPs) and serve as an important link between the innate and adaptive immune responses (4). TIRP, along with other molecules such as TRIF, MAL, and MyD88, serves as an adaptor protein that allows for the interaction and activation of the IL-1R-associated kinase (IRAK) family, the subsequent activation of TNF receptor associated factor (TRAF)-6, and ultimately the activation of NF- κ B (5). Expression of TIRP appears to be essential for TLR4 signalling (6). **Cat.No. 3206

ORDERING INFORMATION

CATALOG NUMBER

X1806P

SIZE

100 μ g

FORM

Unconjugated

HOST/CLONE

Rabbit

FORMULATION

CONCENTRATION

See vial for concentration

ISOTYPE

IgG

APPLICATIONS

Western Blot, Immunohistochemistry (Paraffin)

SPECIES REACTIVITY

Human

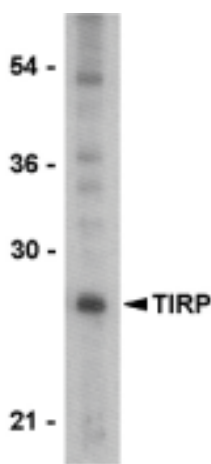
ACCESSION NUMBER

Human Q86XR7

IMMUNOGEN

Rabbit polyclonal TIRP antibody was raised against a peptide corresponding to amino acids at the C-terminus of human TIRP.

Western blot analysis of TIRP in PC-3 cell lysate with TIRP antibody at 1 μ g/ml.



POSITIVE CONTROL/TISSUE EXPRESSION

Found in the lung⁵ and kidney

COMMENTS

TIRP (CT) antibody can be used for detection of TIRP by Western blot at 0.5 to 2 µg/ml.

PURIFICATION

Antigen Immunoaffinity Purification

SHIP CONDITIONS

Ship at ambient temperature, freeze upon arrival

STORAGE CUSTOMER

Product should be stored at -20°C. Aliquot to avoid freeze/thaw cycles

STABILITY

Products are stable for one year from purchase when stored properly

REFERENCES

- 1) O'Neill LAJ, Fitzgerald FA, and Bowie AG. The Toll-IL-1 receptor adaptor family grows to five members. Trends in Imm. 2003;24:286-9.
- 2) Vogel SN, Fitzgerald KA, and Fenton MJ. TLRs: differential adapter utilization by toll-like receptors mediates TLR-specific patterns of gene expression. Mol. Interv. 2003;3:466-77.
- 3) Takeda K, Kaisho T, and Akira S. Toll-like receptors. Annu. Rev. Immunol. 2003;21:335-76.
- 4) Janeway CA Jr and Medzhitov R. Innate immune recognition. Annu. Rev. Immunol. 2002;20:197-216.
- 5) UniProtKB/TrEMBL entry Q86XR7, <http://expasy.org/uniprot/Q86XR7>, Accessed January 30, 2007

PRODUCT SPECIFIC REFERENCES