



SZABO SCANDIC

Part of Europa Biosite

Produktinformation



Forschungsprodukte & Biochemikalien



Zellkultur & Verbrauchsmaterial



Diagnostik & molekulare Diagnostik



Laborgeräte & Service

Weitere Information auf den folgenden Seiten!
See the following pages for more information!



Lieferung & Zahlungsart

siehe unsere [Liefer- und Versandbedingungen](#)

Zuschläge

- Mindermengenzuschlag
- Trockeneiszuschlag
- Gefahrgutzuschlag
- Expressversand

SZABO-SCANDIC HandelsgmbH

Quellenstraße 110, A-1100 Wien

T. +43(0)1 489 3961-0

F. +43(0)1 489 3961-7

mail@szabo-scandic.com

www.szabo-scandic.com

[linkedin.com/company/szaboscandic](https://www.linkedin.com/company/szaboscandic) 

Toll-like receptor 1 (TLR1) (NT). Rabbit Polyclonal Antibody
Toll-like receptor 1 (NT)

BACKGROUND

Toll-like receptors (TLRs) are evolutionarily conserved pattern-recognition molecules resembling the toll proteins that mediate antimicrobial responses in *Drosophila*. These proteins recognize different microbial products during infection and serve as an important link between the innate and adaptive immune responses (1-3). The TLRs act through adaptor molecules such as MyD88 and TIRAP to activate various kinases and transcription factors (4,5) so the organism can respond to potential infection. TLR1 is co-expressed with TLR2 on myeloid cells of the innate immune systems in lymphoid tissue such as monocytes and dendritic cells (6) where they form heterodimers that can recognize triacylated lipoproteins (7).

ORDERING INFORMATION

CATALOG NUMBER

X1808P

SIZE

100 µg

FORM

Unconjugated

HOST/CLONE

Rabbit

FORMULATION

Provided as solution in phosphate buffered saline with 0.02% sodium azide

CONCENTRATION

See vial for concentration

ISOTYPE

IgG

APPLICATIONS

Western Blot, Immunohistochemistry (Paraffin)

SPECIES REACTIVITY

Human, Mouse

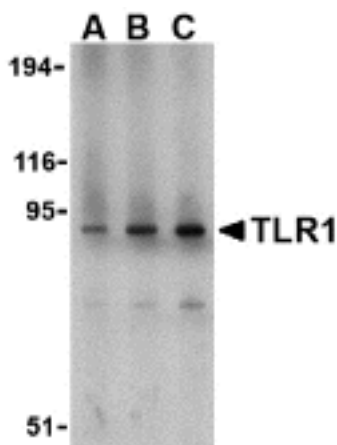
ACCESSION NUMBER

Human vQ6F164

IMMUNOGEN

Rabbit polyclonal TLR1 antibody was raised against a peptide corresponding to 16 amino acids near the amino terminus of human TLR1.

Western blot analysis of TLR1 in mouse spleen lysate with TLR1 antibody at (A) 1, (B) 2, and (C) 4 µg/ml.



POSITIVE CONTROL/TISSUE EXPRESSION

Positive Control: Mouse Spleen Tissue Lysate

COMMENTS

TLR1 antibody can be used for detection of TLR1 by Western blot at 1 to 2 ug/ml, and in IHC at 10 ug/ml.

PURIFICATION

Antigen Immunoaffinity Purification

SHIP CONDITIONS

Ship at ambient temperature, freeze upon arrival

STORAGE CUSTOMER

Product should be stored at -20°C. Aliquot to avoid freeze/thaw cycles

STABILITY

Products are stable for one year from purchase when stored properly

REFERENCES

- 1) Vogel SN, Fitzgerald KA, and Fenton MJ. TLRs: differential adapter utilization by toll-like receptors mediates TLR-specific patterns of gene expression. *Mol. Interv.* 2003; 3:466-77.
- 2) Takeda K, Kaisho T, and Akira S. Toll-like receptors. *Annu. Rev. Immunol.* 2003; 21:335-76.
- 3) Janeway CA Jr. and Medzhitov R. Innate immune recognition. *Annu. Rev. Immunol.* 2002; 20:197-216.
- 4) O'Neill LAJ, Fitzgerald FA, and Bowie AG. The Toll-IL-1 receptor adaptor family grows to five members. *Trends in Imm.* 2003; 24:286-9.

PRODUCT SPECIFIC REFERENCES