



# SZABO SCANDIC

Part of Europa Biosite

## Produktinformation



Forschungsprodukte & Biochemikalien



Zellkultur & Verbrauchsmaterial



Diagnostik & molekulare Diagnostik



Laborgeräte & Service

Weitere Information auf den folgenden Seiten!  
See the following pages for more information!



### Lieferung & Zahlungsart

siehe unsere [Liefer- und Versandbedingungen](#)

### Zuschläge

- Mindermengenzuschlag
- Trockeneiszuschlag
- Gefahrgutzuschlag
- Expressversand

### SZABO-SCANDIC HandelsgmbH

Quellenstraße 110, A-1100 Wien

T. +43(0)1 489 3961-0

F. +43(0)1 489 3961-7

[mail@szabo-scandic.com](mailto:mail@szabo-scandic.com)

[www.szabo-scandic.com](http://www.szabo-scandic.com)

[linkedin.com/company/szaboscandic](https://www.linkedin.com/company/szaboscandic) 



**Toll-like receptor 2 (TLR2) (NT). Rabbit Polyclonal Antibody**  
TIRAP (CT), MAL, TIR domain containing adaptor protein

**BACKGROUND**

Toll-like receptors (TLRs) are signaling molecules that recognize different microbial products during infection and serve as an important link between the innate and adaptive immune responses (1-3). These proteins act through adaptor molecules such as MyD88 and TIRAP to activate various kinases and transcription factors such as Protein Kinase C (PKC) &#945;/&#946; and NF-&#954;B (4-6). TLR2 can form heterodimers with either TLR1 or TLR6, and as a heterodimer can recognize a variety of bacterial and mycoplasma lipoproteins respectively (reviewed in 7).

**ORDERING INFORMATION**

**CATALOG NUMBER**  
X1809P

**SIZE**  
100 µg

**FORM**  
Unconjugated

**HOST/CLONE**  
Rabbit

**FORMULATION**  
Provided as solution in phosphate buffered saline with 0.02% sodium azide

**CONCENTRATION**  
See vial for concentration

**ISOTYPE**  
IgG

**APPLICATIONS**  
Western Blot, Immunohistochemistry

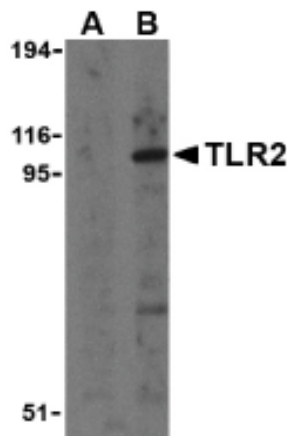
**SPECIES REACTIVITY**  
Human, Mouse

**ACCESSION NUMBER**  
Human O6060

**IMMUNOGEN**

Rabbit polyclonal TLR2 antibody was raised against a peptide corresponding to 14 amino acids near the amino terminus of human TLR2.

Western blot analysis of TLR2 in A20 cell lysates with TLR2 antibody at 1 µg/ml in the presence (A) and absence (B) of its blocking peptide



**POSITIVE CONTROL/TISSUE EXPRESSION**

Located in the membrane, TLR2 is highly expressed in peripheral blood leukocytes, in particular in monocytes, in bone marrow, lymph node and in spleen. Also detected in lung and in fetal liver. Levels are low in other tissues.<sup>8</sup>

**COMMENTS**

TLR2 (NT) antibody can be used for detection of TLR2 by Western blot at 0.5 to ug/ml. Despite its predicted molecular weight, TLR2 runs at ~100 kDa in SDS-PAGE. This polyclonal antibody can also detect TLR2 by immunohistochemistry at 2ug/ml.

**PURIFICATION**

Antigen Immunoaffinity Purification

**SHIP CONDITIONS**

Ship at ambient temperature, freeze upon arrival

**STORAGE CUSTOMER**

Product should be stored at -20°C. Aliquot to avoid freeze/thaw cycles

**STABILITY**

Products are stable for one year from purchase when stored properly

**REFERENCES**

- 1) Vogel SN, Fitzgerald KA, and Fenton MJ. TLRs: differential adapter utilization by toll-like receptors mediates TLR-specific patterns of gene expression. *Mol. Interv.* 2003; 3:466-77.
- 2) Takeda K, Kaisho T, and Akira S. Toll-like receptors. *Annu. Rev. Immunol.* 2003; 21:335-76.
- 3) Janeway CA Jr. and Medzhitov R. Innate immune recognition. *Annu. Rev. Immunol.* 2002; 20:197-216.
- 4) O'Neill LAJ, Fitzgerald FA, and Bowie AG. The Toll-IL-1 receptor adaptor family grows to five members. *Trends in Imm.* 2003; 24:286-9.
- 5) McGettrick AF and O'Neill LAJ. The expanding family of MyD88-like adaptors in Toll-like receptor signal transduction. *Mol Imm.* 2004; 41:577-82.
- 6) Asehnoune K, Strassheim D, Mitra S, et al. Involvement of PKCalpha/beta in TLR4 and TLR2 dependent activation of NF-kappaB. *Cell Signal.* 2005; 17:385-94.
- 7) Wetzler LM. The role of Toll-like receptor 2 in microbial disease and immunity. *Vaccine* 2003; 21 Suppl 2:55-60.
- 8) UniProtKB/Swiss-Prot entry O60603, <http://www.expasy.org/uniprot/O60603>, Accessed February 8, 2007.

**PRODUCT SPECIFIC REFERENCES**