



# SZABO SCANDIC

Part of Europa Biosite

## Produktinformation



Forschungsprodukte & Biochemikalien



Zellkultur & Verbrauchsmaterial



Diagnostik & molekulare Diagnostik



Laborgeräte & Service

Weitere Information auf den folgenden Seiten!  
See the following pages for more information!



### Lieferung & Zahlungsart

siehe unsere [Liefer- und Versandbedingungen](#)

### Zuschläge

- Mindermengenzuschlag
- Trockeneiszuschlag
- Gefahrgutzuschlag
- Expressversand

### SZABO-SCANDIC HandelsgmbH

Quellenstraße 110, A-1100 Wien

T. +43(0)1 489 3961-0

F. +43(0)1 489 3961-7

[mail@szabo-scandic.com](mailto:mail@szabo-scandic.com)

[www.szabo-scandic.com](http://www.szabo-scandic.com)

[linkedin.com/company/szaboscandic](https://www.linkedin.com/company/szaboscandic) 



**Toll-like receptor 3 (TLR3) (NT). Rabbit Polyclonal Antibody**  
TLR3 (NT): Toll-like receptor 3, CD283 antigen

**BACKGROUND**

Toll-like receptors (TLRs) are evolutionarily conserved pattern-recognition molecules resembling the toll proteins that mediate antimicrobial responses in *Drosophila*. These proteins recognize different microbial products during infection and serve as an important link between the innate and adaptive immune responses (1,2). The TLRs act through adaptor molecules such as MyD88 and TIRAP to activate various kinases and transcription factors (3) so the organism can respond to potential infection. TLR3 is known to recognize viral double-stranded (ds) RNA, a molecular pattern associated with viral infection (4). Recently it has been shown to recognize viruses such as Influenza A (5) and West Nile Virus and can mediate entry of at least West Nile Virus (6).

**ORDERING INFORMATION**

**CATALOG NUMBER**

X1811P

**SIZE**

100 µg

**FORM**

Unconjugated

**HOST/CLONE**

Rabbit

**FORMULATION**

Provided as solution in phosphate buffered saline with 0.02% sodium azide

**CONCENTRATION**

See vial for concentration

**ISOTYPE**

IgG

**APPLICATIONS**

Western Blot, Immunohistochemistry (Paraffin)

**SPECIES REACTIVITY**

Human, Mouse

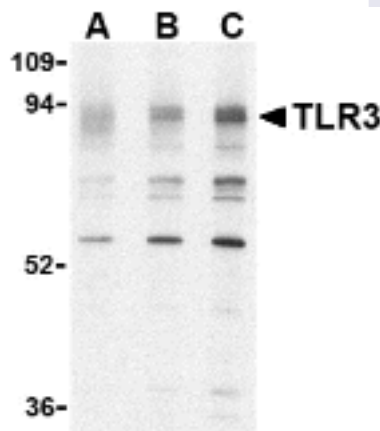
**ACCESSION NUMBER**

Human O15455

**IMMUNOGEN**

Rabbit polyclonal TLR3 antibody was raised against a peptide corresponding to 15 amino acids near the amino terminus of human TLR3.

Western blot analysis of TLR3 in K562 cell lysate with TLR3 antibody at (A) 0.5, (B) 1 and (C) 2 µg/ml.



**POSITIVE CONTROL/TISSUE EXPRESSION**

Located in the membrane and expressed at high level in placenta and pancreas. Also detected in CD11c+ immature dendritic cells. Only expressed in dendritic cells and not in other leukocytes, including monocyte precursors.<sup>7</sup>

**COMMENTS**

TLR3 antibody can be used for detection of TLR3 by Western blot at 1 to 2 ug/ml. K562 cell lysate can be used as a positive control. TLR3 antibody is human and mouse reactive. This product is for research use only.

**PURIFICATION**

Antigen Immunoaffinity Purification

**SHIP CONDITIONS**

Ship at ambient temperature, freeze upon arrival

**STORAGE CUSTOMER**

Product should be stored at -20°C. Aliquot to avoid freeze/thaw cycles

**STABILITY**

Products are stable for one year from purchase when stored properly

**REFERENCES**

- 1) Takeda K, Kaisho T, and Akira S. Toll-like receptors. *Annu. Rev. Immunol.* 2003; 21:335-76.
- 2) Janeway CA Jr. and Medzhitov R. Innate immune recognition. *Annu. Rev. Immunol.* 2002; 20:197-216.
- 3) McGettrick AF and O'Neill LAJ. The expanding family of MyD88-like adaptors in Toll-like receptor signal transduction. *Mol. Imm.* 2004; 41:577-82.
- 4) Alexopoulou L, Holt AC, Medzhitov R, et al. Recognition of double-stranded RNA and activation of NF-kappaB by Toll-like receptor 3. *Nature* 2001; 413:732-8.
- 5) Guillot L, Le Goffic R, Bloch S, et al. Involvement of toll-like receptor 3 in the immune response of lung epithelial cells to double-stranded RNA and influenza A virus. *J. Biol. Chem.* 2005; 280:5571-80.
- 6) Wang T, Town T, Alexopoulou L, et al. Toll-like receptor 3 mediates West Nile virus entry into the brain causing lethal encephalitis. *Nat. Med.* 2004; 10:1366-73.
- 7) UniProtKB/Swiss-Prot entry O15455, <http://www.expasy.org/uniprot/O15455>, Accessed February 2, 2007.

**PRODUCT SPECIFIC REFERENCES**