



SZABO SCANDIC

Part of Europa Biosite

Produktinformation



Forschungsprodukte & Biochemikalien



Zellkultur & Verbrauchsmaterial



Diagnostik & molekulare Diagnostik



Laborgeräte & Service

Weitere Information auf den folgenden Seiten!
See the following pages for more information!



Lieferung & Zahlungsart

siehe unsere [Liefer- und Versandbedingungen](#)

Zuschläge

- Mindermengenzuschlag
- Trockeneiszuschlag
- Gefahrgutzuschlag
- Expressversand

SZABO-SCANDIC HandelsgmbH

Quellenstraße 110, A-1100 Wien

T. +43(0)1 489 3961-0

F. +43(0)1 489 3961-7

mail@szabo-scandic.com

www.szabo-scandic.com

[linkedin.com/company/szaboscandic](https://www.linkedin.com/company/szaboscandic) 

Toll-like receptor 4 (TLR4) (NT). Rabbit Polyclonal Antibody
hToll, CD284 antigen

BACKGROUND

Toll-like receptors (TLRs) are signaling molecules that recognize different microbial products during infection and serve as an important link between the innate and adaptive immune responses (1-3). These proteins act through adaptor molecules such as MyD88 and TIRAP to activate various kinases and transcription factors such as Protein Kinase C (PKC) α/β and NF-κB (4-6). Studies with TLR4-deficient mice indicate that the main ligand for TLR is lipopolysaccharide. Consequently, these mice also showed increased susceptibility to Gram-negative sepsis (7).

ORDERING INFORMATION

CATALOG NUMBER

X1812P

SIZE

100 µg

FORM

Unconjugated

HOST/CLONE

Rabbit

FORMULATION

Provided as solution in phosphate buffered saline with 0.02% sodium azide

CONCENTRATION

See vial for concentration

ISOTYPE

IgG

APPLICATIONS

Western Blot, Immunohistochemistry, Immunofluorescence, Immunocytochemistry (Paraffin)

SPECIES REACTIVITY

Human

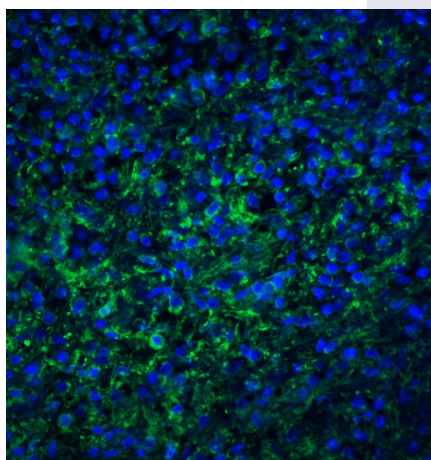
ACCESSION NUMBER

Human O00206

IMMUNOGEN

Rabbit polyclonal TLR4 antibody was raised against a peptide corresponding to 15 amino acids near the amino-terminus of human TLR4.

Immunofluorescence of TLR4 in human spleen tissue section using TLR4 antibody at 20 µg/ml.



POSITIVE CONTROL/TISSUE EXPRESSION

Located in the membrane and highly expressed in placenta, spleen and peripheral blood leukocytes. Detected in monocytes, macrophages, dendritic cells and several types of T-cells

COMMENTS

TLR4 antibody can be used for detection of TLR4 by Western blot at 2 to 5 ug/ml, immunohistochemistry (2-3 µg/ml), immunofluorescence (20 µg/ml) and immunocytochemistry (2-3 µg/ml).

PURIFICATION

Antigen Immunoaffinity Purification

SHIP CONDITIONS

Ship at ambient temperature, freeze upon arrival

STORAGE CUSTOMER

Product should be stored at -20°C. Aliquot to avoid freeze/thaw cycles

STABILITY

Products are stable for one year from purchase when stored properly

REFERENCES

- 1) Vogel SN, Fitzgerald KA, and Fenton MJ. TLRs: differential adapter utilization by toll-like receptors mediates TLR-specific patterns of gene expression. *Mol. Interv.* 2003; 3:466-77.
- 2) Takeda K, Kaisho T, and Akira S. Toll-like receptors. *Annu. Rev. Immunol.* 2003; 21:335-76.
- 3) Janeway CA Jr. and Medzhitov R. Innate immune recognition. *Annu. Rev. Immunol.* 2002; 20:197-216.
- 4) O'Neill LAJ, Fitzgerald FA, and Bowie AG. The Toll-IL-1 receptor adaptor family grows to five members. *Trends in Imm.* 2003; 24:286-9.
- 5) McGettrick AF and O'Neill LAJ. The expanding family of MyD88-like adaptors in Toll-like receptor signal transduction. *Mol Imm.* 2004; 41:577-82.
- 6) Asehnoune K, Strassheim D, Mitra S, et al. Involvement of PKCalpha/beta in TLR4 and TLR2 dependent activation of NF-kappaB. *Cell Signal.* 2005; 17:385-94.
- 7) Poltorak A, He X, Smirnova I, et al. Defective LPS signaling in C3H/HeJ and C57BL/10ScCr mice: mutations in Tlr4 gene. *Science* 1998; 282:2085-8. (RD1005)
- 8) UniProtKB/Swiss-Prot entry O00206, <http://www.expasy.org/uniprot/O00206>, Accessed February 5, 2007.

PRODUCT SPECIFIC REFERENCES