



# SZABO SCANDIC

Part of Europa Biosite

## Produktinformation



Forschungsprodukte & Biochemikalien



Zellkultur & Verbrauchsmaterial



Diagnostik & molekulare Diagnostik



Laborgeräte & Service

Weitere Information auf den folgenden Seiten!  
See the following pages for more information!



### Lieferung & Zahlungsart

siehe unsere [Liefer- und Versandbedingungen](#)

### Zuschläge

- Mindermengenzuschlag
- Trockeneiszuschlag
- Gefahrgutzuschlag
- Expressversand

### SZABO-SCANDIC HandelsgmbH

Quellenstraße 110, A-1100 Wien

T. +43(0)1 489 3961-0

F. +43(0)1 489 3961-7

[mail@szabo-scandic.com](mailto:mail@szabo-scandic.com)

[www.szabo-scandic.com](http://www.szabo-scandic.com)

[linkedin.com/company/szaboscandic](https://www.linkedin.com/company/szaboscandic) 

**Toll-like receptor 5 (TLR5) (CT). Rabbit Polyclonal Antibody**  
TLR5 (CT): Toll-like receptor 5

**BACKGROUND**

Toll-like receptors (TLRs) are evolutionarily conserved pattern-recognition molecules resembling the toll proteins that mediate antimicrobial responses in *Drosophila*. These proteins recognize different microbial products during infection and serve as an important link between the innate and adaptive immune responses (1,2). The TLRs act through adaptor molecules such as MyD88 and TIRAP to activate various kinases and transcription factors (3) so the organism can respond to potential infection. TLR5 recognizes flagellin from both Gram-positive and Gram-negative bacteria and will cause the activation of NF- $\kappa$ B, leading to the activation of TNF-alpha; and other cytokines (4). A common TLR5 stop codon polymorphism that disrupts TLR5 signaling is associated with susceptibility to Legionnaires' disease and demonstrates the importance of TLR5 in the innate immune response (5).

**ORDERING INFORMATION**

**CATALOG NUMBER**

X1813P

**SIZE**

100  $\mu$ g

**FORM**

Unconjugated

**HOST/CLONE**

Rabbit

**FORMULATION**

Provided as solution in phosphate buffered saline with 0.02% sodium azide

**CONCENTRATION**

See vial for concentration

**ISOTYPE**

IgG

**APPLICATIONS**

Western Blot, Immunocytochemistry (Paraffin)

**SPECIES REACTIVITY**

Human, Mouse

**ACCESSION NUMBER**

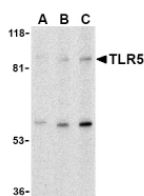
Human O60602

**IMMUNOGEN**

Rabbit polyclonal TLR5 antibody was raised against a peptide corresponding to 15 amino acids near the carboxy terminus of human TLR5.

Western blot (left) analysis of TLR5 in THP-1 cell lysate with TLR5 antibody at (A) 0.5, (B) 1 and (C) 2  $\mu$ g/ml.

Immunocytochemical staining of THP-1 cells using TLR5 (CT) antibody at 10  $\mu$ g/ml.



**POSITIVE CONTROL/TISSUE EXPRESSION**

Found in the membrane, TLR5 is highly expressed in ovary and in peripheral blood leukocytes, especially in monocytes, less in CD11c+ immature dendritic cells. Also detected in prostate and testis.<sup>6</sup>

**COMMENTS**

TLR5 antibody can be used for detection of TLR5 by Western blot at 1 to 2 µg/ml. Can also be used for immunocytochemistry at 10 µg/ml.

**PURIFICATION**

Antigen Immunoaffinity Purification

**SHIP CONDITIONS**

Ship at ambient temperature, freeze upon arrival

**STORAGE CUSTOMER**

Product should be stored at -20°C. Aliquot to avoid freeze/thaw cycles

**STABILITY**

Products are stable for one year from purchase when stored properly

**REFERENCES**

- 1) Takeda K, Kaisho T, and Akira S. Toll-like receptors. *Annu. Rev. Immunol.* 2003; 21:335-76.
- 2) Janeway CA Jr. and Medzhitov R. Innate immune recognition. *Annu. Rev. Immunol.* 2002; 20:197-216.
- 3) McGettrick AF and O'Neill LAJ. The expanding family of MyD88-like adaptors in Toll-like receptor signal transduction. *Mol. Imm.* 2004; 41:577-82.
- 4) Hayashi F, Smith KD, Ozinsky A, et al. The innate immune response to bacterial flagellin is mediated by Toll-like receptor
- 5) *Nature* 2001; 410:1099-103. 5. Hawn TR, Verbon A, Lettinga KD, et al. A common dominant TLR5 stop codon polymorphism abolishes flagellin signaling and is associated with susceptibility to legionnaires' disease. *J. Exp. Med.* 2003; 198:1563-72.
- 6) UniProtKB/Swiss-Prot entry O60602, <http://ca.expasy.org/uniprot/O60602>, Accessed February 7, 2007.

**PRODUCT SPECIFIC REFERENCES**