



SZABO SCANDIC

Part of Europa Biosite

Produktinformation



Forschungsprodukte & Biochemikalien



Zellkultur & Verbrauchsmaterial



Diagnostik & molekulare Diagnostik



Laborgeräte & Service

Weitere Information auf den folgenden Seiten!
See the following pages for more information!



Lieferung & Zahlungsart

siehe unsere [Liefer- und Versandbedingungen](#)

Zuschläge

- Mindermengenzuschlag
- Trockeneiszuschlag
- Gefahrgutzuschlag
- Expressversand

SZABO-SCANDIC HandelsgmbH

Quellenstraße 110, A-1100 Wien

T. +43(0)1 489 3961-0

F. +43(0)1 489 3961-7

mail@szabo-scandic.com

www.szabo-scandic.com

[linkedin.com/company/szaboscandic](https://www.linkedin.com/company/szaboscandic) 

Toll-like receptor 5 (TLR5) (IN). Rabbit Polyclonal Antibody
TLR5 (IN): Toll-like receptor 5

BACKGROUND

Toll-like receptors (TLRs) are evolutionarily conserved pattern-recognition molecules resembling the toll proteins that mediate antimicrobial responses in *Drosophila*. These proteins recognize different microbial products during infection and serve as an important link between the innate and adaptive immune responses (1,2). The TLRs act through adaptor molecules such as MyD88 and TIRAP to activate various kinases and transcription factors (3) so the organism can respond to potential infection. TLR5 recognizes flagellin from both Gram-positive and Gram-negative bacteria and will cause the activation of NF- κ B, leading to the activation of TNF- α and other cytokines (4). A common TLR5 stop codon polymorphism that disrupts TLR5 signaling is associated with susceptibility to Legionnaires' disease and demonstrates the importance of TLR5 in the innate immune response (5).

ORDERING INFORMATION

CATALOG NUMBER

X1814P

SIZE

100 μ g

FORM

Unconjugated

HOST/CLONE

Rabbit

FORMULATION

Provided as solution in phosphate buffered saline with 0.02% sodium azide

CONCENTRATION

See vial for concentration

ISOTYPE

IgG

APPLICATIONS

Western Blot

SPECIES REACTIVITY

Human, Mouse, Rat

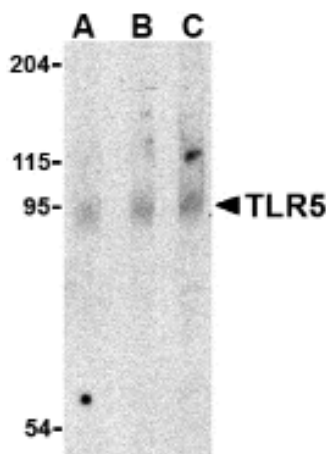
ACCESSION NUMBER

Human O60602

IMMUNOGEN

Rabbit polyclonal TLR5 antibody was raised against a peptide corresponding to 16 amino acids near the center of human TLR5.

Western blot analysis of TLR5 in rat brain cell lysate with TLR5 antibody at (A) 0.5, (B) 1 and (C) 2 μ g/ml.



POSITIVE CONTROL/TISSUE EXPRESSION

Found in the membrane, TLR5 is highly expressed in ovary and in peripheral blood leukocytes, especially in monocytes, less in CD11c+ immature dendritic cells. Also detected in prostate and testis.⁶

COMMENTS

TLR5 antibody can be used for detection of TLR5 by Western blot at 1 to 2 ug/ml.

PURIFICATION

Antigen Immunoaffinity Purification

SHIP CONDITIONS

Ship at ambient temperature, freeze upon arrival

STORAGE CUSTOMER

Product should be stored at -20°C. Aliquot to avoid freeze/thaw cycles

STABILITY

Products are stable for one year from purchase when stored properly

REFERENCES

- 1) Takeda K, Kaisho T, and Akira S. Toll-like receptors. *Annu. Rev. Immunol.* 2003; 21:335-76.
- 2) Janeway CA Jr. and Medzhitov R. Innate immune recognition. *Annu. Rev. Immunol.* 2002; 20:197-216.
- 3) McGettrick AF and O'Neill LAJ. The expanding family of MyD88-like adaptors in Toll-like receptor signal transduction. *Mol. Imm.* 2004; 41:577-82.
- 4.) Hayashi F, Smith KD, Ozinsky A, et al. The innate immune response to bacterial flagellin is mediated by Toll-like receptor 5. *Nature* 2001; 410:1099-103.
- 5) Hawn TR, Verbon A, Lettinga KD, et al. A common dominant TLR5 stop codon polymorphism abolishes flagellin signaling and is associated with susceptibility to legionnaires' disease. *J. Exp. Med.* 2003; 198:1563-72.

PRODUCT SPECIFIC REFERENCES