



SZABO SCANDIC

Part of Europa Biosite

Produktinformation



Forschungsprodukte & Biochemikalien



Zellkultur & Verbrauchsmaterial



Diagnostik & molekulare Diagnostik



Laborgeräte & Service

Weitere Information auf den folgenden Seiten!
See the following pages for more information!



Lieferung & Zahlungsart

siehe unsere [Liefer- und Versandbedingungen](#)

Zuschläge

- Mindermengenzuschlag
- Trockeneiszuschlag
- Gefahrgutzuschlag
- Expressversand

SZABO-SCANDIC HandelsgmbH

Quellenstraße 110, A-1100 Wien

T. +43(0)1 489 3961-0

F. +43(0)1 489 3961-7

mail@szabo-scandic.com

www.szabo-scandic.com

[linkedin.com/company/szaboscandic](https://www.linkedin.com/company/szaboscandic) 



Toll-like receptor 6 (TLR6) (IN). Rabbit Polyclonal Antibody

TLR6 (IN): Toll-like receptor 6, CD286 antigen

BACKGROUND

Toll-like receptors (TLRs) are evolutionarily conserved pattern-recognition molecules resembling the toll proteins that mediate antimicrobial responses in *Drosophila*. These proteins recognize different microbial products during infection and serve as an important link between the innate and adaptive immune responses (1,2). The TLRs act through adaptor molecules such as MyD88 and TIRAP to activate various kinases and transcription factors (3) so the organism can respond to potential infection. TLR6 was first identified as a close homolog of TLR1, sharing 69% sequence identity (4). Like TLR1, TLR6 can form heterodimers with TLR2, and these TLR6:TLR2 dimers coordinate macrophage activation by Gram-positive bacteria and the yeast cell wall particle zymosan (5). Activation of these complexes not only initiates pro-inflammatory cascades, but also can lead to apoptotic responses (6)

ORDERING INFORMATION

CATALOG NUMBER

X1815P

SIZE

100 μ g

FORM

Unconjugated

HOST/CLONE

Rabbit

FORMULATION

Provided as solution in phosphate buffered saline with 0.02% sodium azide

CONCENTRATION

See vial for concentration

ISOTYPE

IgG

APPLICATIONS

Western Blot

SPECIES REACTIVITY

Human

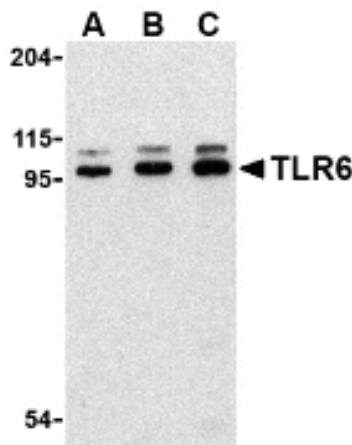
ACCESSION NUMBER

Human Q9Y2C9

IMMUNOGEN

Rabbit polyclonal TLR6 antibody was raised against a peptide corresponding to 13 amino acids near the center of human TLR6.

Western blot analysis of TLR6 in Jurkat cell lysate with TLR6 antibody at (A) 0.5, (B) 1 and (C) 2 μ g/ml.



POSITIVE CONTROL/TISSUE EXPRESSION

Located in the membrane, TLR6 is detected in monocytes, CD11c+ immature dendritic cells, plasmacytoid pre-dendritic cells and dermal microvessel endothelial cells.⁷

COMMENTS

TLR6 antibody can be used for detection of TLR6 by Western blot at 0.5 to 1 ug/ml.

PURIFICATION

Antigen Immunoaffinity Purification

SHIP CONDITIONS

Ship at ambient temperature, freeze upon arrival

STORAGE CUSTOMER

Product should be stored at -20°C. Aliquot to avoid freeze/thaw cycles

STABILITY

Products are stable for one year from purchase when stored properly

REFERENCES

- 1) Takeda K, Kaisho T, and Akira S. Toll-like receptors. *Annu. Rev. Immunol.* 2003; 21:335-76.
- 2) Janeway CA Jr. and Medzhitov R. Innate immune recognition. *Annu. Rev. Immunol.* 2002; 20:197-216.
- 3) McGettrick AF and O'Neill LAJ. The expanding family of MyD88-like adaptors in Toll-like receptor signal transduction. *Mol. Imm.* 2004; 41:577-82.
- 4) Takeuchi O, Kawai T, Sanjo H, et al. TLR6: A novel member of an expanding Toll-like receptor family. *Gene* 1999; 231:59-65.
- 5) Ozinsky A, Underhill DM, Fontenot JD, et al. The repertoire for pattern recognition of pathogens by the innate immune system is defined by cooperation between toll-like receptors. *Proc. Natl. Acad. Sci. USA* 2000; 97:13766-71.
- 6) Into T, Kiura K, Yasuda M, et al. Stimulation of human Tolllike receptor (TLR) 2 and TLR6 with membrane lipoproteins of *Mycoplasma fermentans* induces apoptotic cell death after NF-kappa B activation. *Cell Microbiol.* 2004; 6:187-99. (WD1105)
- 7) UniProtKB/Swiss-Prot entry Q9Y2C9, <http://www.expasy.org/uniprot/Q9Y2C9>, Accessed 2/9/2007.

PRODUCT SPECIFIC REFERENCES