



SZABO SCANDIC

Part of Europa Biosite

Produktinformation



Forschungsprodukte & Biochemikalien



Zellkultur & Verbrauchsmaterial



Diagnostik & molekulare Diagnostik



Laborgeräte & Service

Weitere Information auf den folgenden Seiten!
See the following pages for more information!



Lieferung & Zahlungsart

siehe unsere [Liefer- und Versandbedingungen](#)

Zuschläge

- Mindermengenzuschlag
- Trockeneiszuschlag
- Gefahrgutzuschlag
- Expressversand

SZABO-SCANDIC HandelsgmbH

Quellenstraße 110, A-1100 Wien

T. +43(0)1 489 3961-0

F. +43(0)1 489 3961-7

mail@szabo-scandic.com

www.szabo-scandic.com

[linkedin.com/company/szaboscandic](https://www.linkedin.com/company/szaboscandic) 

Toll-like receptor 7 (TLR7) (IN). Rabbit Polyclonal Antibody

BACKGROUND

Toll-like receptors (TLRs) are signaling molecules that recognize different microbial products during infection and serve as an important link between the innate and adaptive immune responses (1-3). These proteins act through adaptor molecules such as MyD88 and TIRAP to activate various kinases and transcription factors (4,5). TLR7, like TLRs 3, 8, and 9, is localized in intracellular acidic compartments such as the phagolysosome (6) and will recognize some single-stranded RNA viruses such as vesicular stomatitis virus (VSV) and influenza virus (7). Activation of TLR7 by VSV results in stimulation of the immune response including IFNA secretion, suggesting the importance of TLR7 in virus recognition.

ORDERING INFORMATION

CATALOG NUMBER

X1817P

SIZE

100 µg

FORM

Unconjugated

HOST/CLONE

Rabbit

FORMULATION

Provided as solution in phosphate buffered saline with 0.02% sodium azide

CONCENTRATION

See vial for concentration

ISOTYPE

IgG

APPLICATIONS

Western Blot, Immunocytochemistry

SPECIES REACTIVITY

Human, Mouse

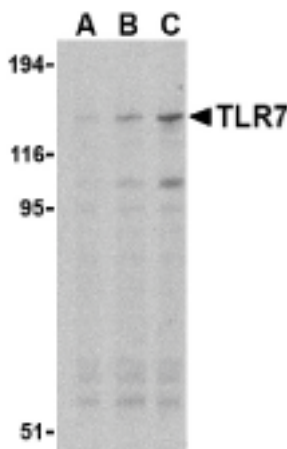
ACCESSION NUMBER

Human Q9NYK1

IMMUNOGEN

Rabbit polyclonal TLR7 antibody was raised against a peptide corresponding to 14 amino acids near the middle of mouse TLR7.

Western blot analysis of TLR7 in Daudi cell lysates with TLR7 antibody at (A) 0.5, (B) 1, and (C) 2 µg/ml.



POSITIVE CONTROL/TISSUE EXPRESSION

Positive Control-Daudi Cell Lysate

Located in the membrane, TLR7 is detected in brain, placenta, spleen, stomach, small intestine, lung and in plasmacytoid pre-dendritic cells.

COMMENTS

TLR7 (IN) antibody can be used for detection of TLR7 by Western blot at 0.5 to 2 ug/ml.

PURIFICATION

Antigen Immunoaffinity Purification

SHIP CONDITIONS

Ship at ambient temperature, freeze upon arrival

STORAGE CUSTOMER

Product should be stored at -20°C. Aliquot to avoid freeze/thaw cycles

STABILITY

Products are stable for one year from purchase when stored properly

REFERENCES

- 1) Vogel SN, Fitzgerald KA, and Fenton MJ. TLRs: differential adapter utilization by toll-like receptors mediates TLR-specific patterns of gene expression. *Mol. Interv.* 2003; 3:466-77.
- 2) Takeda K, Kaisho T, and Akira S. Toll-like receptors. *Annu. Rev. Immunol.* 2003; 21:335-76.
- 3) Janeway CA Jr. and Medzhitov R. Innate immune recognition. *Annu. Rev. Immunol.* 2002; 20:197-216.
- 4) O'Neill LAJ, Fitzgerald FA, and Bowie AG. The Toll-IL-1 receptor adaptor family grows to five members. *Trends in Imm.* 2003; 24:286-9.
- 5) McGettrick AF and O'Neill LAJ. The expanding family of MyD88-like adaptors in Toll-like receptor signal transduction. *Mol Imm.* 2004; 41:577-82.
- 6) Nishiya T and DeFranco AL. Ligand-regulated chimeric receptor approach reveals distinctive subcellular localization and signaling properties of the Toll-like receptors. *J. Biol. Chem.* 2004; 279:19008-17.
- 7) Lund JM, Alexopoulou L, Sato A, et al. Recognition of single-stranded RNA viruses by Toll-like receptor 7. *Nature* 2002; 420:329-333.
- 8) UniProtKB/Swiss-Prot entry Q9NYK1, <http://www.expasy.org/uniprot/Q9NYK1>, Accessed February 9, 2007.

PRODUCT SPECIFIC REFERENCES