



SZABO SCANDIC

Part of Europa Biosite

Produktinformation



Forschungsprodukte & Biochemikalien



Zellkultur & Verbrauchsmaterial



Diagnostik & molekulare Diagnostik



Laborgeräte & Service

Weitere Information auf den folgenden Seiten!
See the following pages for more information!



Lieferung & Zahlungsart

siehe unsere [Liefer- und Versandbedingungen](#)

Zuschläge

- Mindermengenzuschlag
- Trockeneiszuschlag
- Gefahrgutzuschlag
- Expressversand

SZABO-SCANDIC HandelsgmbH

Quellenstraße 110, A-1100 Wien

T. +43(0)1 489 3961-0

F. +43(0)1 489 3961-7

mail@szabo-scandic.com

www.szabo-scandic.com

[linkedin.com/company/szaboscandic](https://www.linkedin.com/company/szaboscandic) 



Toll-like receptor 9 (TLR9) (CT). Rabbit Polyclonal Antibody
TLR9 (CT): Toll-like receptor 9, CD289 antigen

BACKGROUND

Toll-like receptors (TLRs) are evolutionarily conserved pattern-recognition molecules resembling the toll proteins that mediate antimicrobial responses in *Drosophila*. These proteins recognize different microbial products during infection and serve as an important link between the innate and adaptive immune responses (1,2). TLR9 forms a subfamily along with TLR7 and TLR8 that recognize viral RNA and CpG DNA sequences (3) and are localized in intracellular acidic compartments such as the phagolysosome (4). Unlike other TLRs which act through adaptor molecules such as TOLLIP, TIRAP, TRIF, and MyD88 to activate various kinases and transcription factors to respond to potential infection (5), TLR9 is strictly dependent on MyD88 (3).

ORDERING INFORMATION

CATALOG NUMBER

X1819P

SIZE

100 µg

FORM

Unconjugated

HOST/CLONE

Rabbit

FORMULATION

Provided as solution in phosphate buffered saline with 0.02% sodium azide

CONCENTRATION

See vial for concentration

ISOTYPE

IgG

APPLICATIONS

Western Blot, Immunohistochemistry (Paraffin)

SPECIES REACTIVITY

Human, Mouse

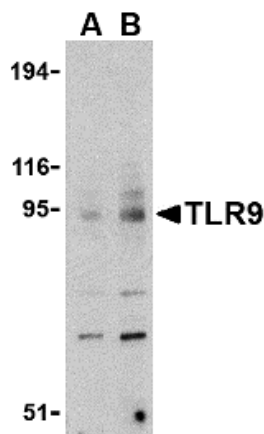
ACCESSION NUMBER

Human Q9NR96

IMMUNOGEN

Rabbit polyclonal TLR9 antibody was raised against a peptide corresponding to 16 amino acids near the carboxy terminus of human TLR9.

Western blot analysis of TLR9 Cat # X1819P in mouse spleen cell lysate with TLR9 antibody at (A) 0.5 (B) 1 µg/ml



POSITIVE CONTROL/TISSUE EXPRESSION

Positive Control: Mouse Spleen Tissue Lysate

Located in the membrane, and highly expressed in spleen, lymph node, tonsil and peripheral blood leukocytes, especially in plasmacytoid pre-dendritic cells. Levels are much lower in monocytes and CD11c+ immature dendritic cells. Also detected in lung and liver.

COMMENTS

TLR9 antibody can be used for detection of TLR9 by Western blot at 1 to 2 ug/ml and in IHC at 2 µg/ml

PURIFICATION

Antigen Immunoaffinity Purification

SHIP CONDITIONS

Ship at ambient temperature, freeze upon arrival

STORAGE CUSTOMER

Product should be stored at -20°C. Aliquot to avoid freeze/thaw cycles

STABILITY

Products are stable for one year from purchase when stored properly

REFERENCES

1. Takeda K, Kaisho T, and Akira S. Toll-like receptors. *Annu. Rev. Immunol.* 2003; 21:335-76.
2. Janeway CA Jr. and Medzhitov R. Innate immune recognition. *Annu. Rev. Immunol.* 2002; 20:197-216.
3. Wagner H. The immunobiology of the TLR9 subfamily. *Trends Immunol.* 2004; 381-6.
4. Nishiya T and DeFranco AL. Ligand-regulated chimeric receptor approach reveals distinctive subcellular localization and signaling properties of the Toll-like receptors. *J. Biol. Chem.* 2004; 279:19008-17.
5. McGettrick AF and O'Neill LAJ. The expanding family of MyD88-like adaptors in Toll-like receptor signal transduction. *Mol Imm.* 2004; 41:577-82.

PRODUCT SPECIFIC REFERENCES