



# SZABO SCANDIC

Part of Europa Biosite

## Produktinformation



Forschungsprodukte & Biochemikalien



Zellkultur & Verbrauchsmaterial



Diagnostik & molekulare Diagnostik



Laborgeräte & Service

Weitere Information auf den folgenden Seiten!  
See the following pages for more information!



### Lieferung & Zahlungsart

siehe unsere [Liefer- und Versandbedingungen](#)

### Zuschläge

- Mindermengenzuschlag
- Trockeneiszuschlag
- Gefahrgutzuschlag
- Expressversand

### SZABO-SCANDIC HandelsgmbH

Quellenstraße 110, A-1100 Wien

T. +43(0)1 489 3961-0

F. +43(0)1 489 3961-7

[mail@szabo-scandic.com](mailto:mail@szabo-scandic.com)

[www.szabo-scandic.com](http://www.szabo-scandic.com)

[linkedin.com/company/szaboscandic](https://www.linkedin.com/company/szaboscandic) 

**Toll-like receptor 10 (TLR10) (IN). Rabbit Polyclonal Antibody**  
CD290

**BACKGROUND**

Toll-like receptors (TLRs) are signaling molecules that recognize different microbial products during infection and serve as an important link between the innate and adaptive immune responses. These proteins act through adaptor molecules such as MyD88 and TIRAP to activate various kinases and transcription factors. TLR10 is highly homologous to TLRs 1 and 6 and is most highly expressed in lymphoid tissues. Most recently genetic variation in TLR10 has been associated with contributing to asthma risk. It should be noted that TLR10 exists in mice only as a pseudogene

**ORDERING INFORMATION**

**CATALOG NUMBER**

X1821P

**SIZE**

100 µg

**FORM**

Unconjugated

**HOST/CLONE**

Rabbit

**FORMULATION**

Provided as solution in phosphate buffered saline with 0.02% sodium azide

**CONCENTRATION**

See vial for concentration

**ISOTYPE**

IgG

**APPLICATIONS**

Western Blot

**SPECIES REACTIVITY**

Human

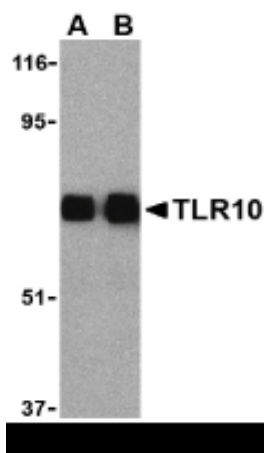
**ACCESSION NUMBER**

Human AAQ8866

**IMMUNOGEN**

Rabbit polyclonal TLR10 antibody was raised against a peptide corresponding to 14 amino acids near the middle of human TLR10.

Western blot analysis of TLR10 in human lymph node cell lysates with TLR10 antibody (IN) at (A) 0.5 and (B) 1 µg/m



**POSITIVE CONTROL/TISSUE EXPRESSION**

Highly expressed in spleen, lymph node, thymus, tonsil and at lower levels in lung. Highly expressed in promyelocytic HL-60 cells and in B-cell lines.

**COMMENTS**

TLR10 (IN) antibody can be used for detection of TLR10 by Western blot at 0.5 to 1 ug/ml. Despite its predicted size of ~90 kDa, a band corresponding to TLR10 is observed at ~75 kDa in immunoblot assays.

**PURIFICATION**

Antigen Immunoaffinity Purification

**SHIP CONDITIONS**

Ship at ambient temperature, freeze upon arrival

**STORAGE CUSTOMER**

Product should be stored at -20°C. Aliquot to avoid freeze/thaw cycles

**STABILITY**

Products are stable for one year from purchase when stored properly

**REFERENCES**

- 1) Vogel SN, Fitzgerald KA, and Fenton MJ. TLRs: differential adapter utilization by toll-like receptors mediates TLR-specific patterns of gene expression..Mol. Interv. 2003; 3:466-77.
- 2) Takeda K, Kaisho T, and Akira S. Toll-like receptors. Annu. Rev. Immunol. 2003; 21:335-76.
- 3) Janeway CA Jr. and Medzhitov R. Innate immune recognition. Annu. Rev. Immunol. 2002; 20:197-216
- 4) O'Neill LAJ, Fitzgerald FA, and Bowie AG. The Toll-IL-1 receptor adaptor family grows to five members. Trends in Imm. 2003; 24:286-9.</i>

**PRODUCT SPECIFIC REFERENCES**