



SZABO SCANDIC

Part of Europa Biosite

Produktinformation



Forschungsprodukte & Biochemikalien



Zellkultur & Verbrauchsmaterial



Diagnostik & molekulare Diagnostik



Laborgeräte & Service

Weitere Information auf den folgenden Seiten!
See the following pages for more information!



Lieferung & Zahlungsart

siehe unsere [Liefer- und Versandbedingungen](#)

Zuschläge

- Mindermengenzuschlag
- Trockeneiszuschlag
- Gefahrgutzuschlag
- Expressversand

SZABO-SCANDIC HandelsgmbH

Quellenstraße 110, A-1100 Wien

T. +43(0)1 489 3961-0

F. +43(0)1 489 3961-7

mail@szabo-scandic.com

www.szabo-scandic.com

[linkedin.com/company/szaboscandic](https://www.linkedin.com/company/szaboscandic) 

Toll interacting protein (TOLLIP/TOLIP) ((IN)). Rabbit Polyclonal Antibody
TOLLIP (IN): Toll interacting protein

BACKGROUND

Toll-like receptors (TLRs) are evolutionarily conserved pattern-recognition molecules resembling the toll proteins that mediate antimicrobial responses in *Drosophila*. These proteins recognize different microbial products during infection and serve as an important link between the innate and adaptive immune responses (1,2). The TLRs act through adaptor molecules to activate various kinases and transcription factors (3) so the organism can respond to potential infection. These adaptor molecules include TOLLIP, MyD88, and TRIF. TOLLIP associates directly with TLR2 and TLR 4, acting as an inhibitor to TLR activation (4). This negative regulation of TLR signaling may serve to limit the production of proinflammatory mediators during infection and inflammation.

ORDERING INFORMATION

CATALOG NUMBER

X1825P

SIZE

100 µg

FORM

Unconjugated

HOST/CLONE

Rabbit

FORMULATION

Provided as solution in phosphate buffered saline with 0.02% sodium azide

CONCENTRATION

See vial for concentration

ISOTYPE

IgG

APPLICATIONS

Western Blot, Immunohistochemistry (Paraffin)

SPECIES REACTIVITY

Human, Mouse, Rat

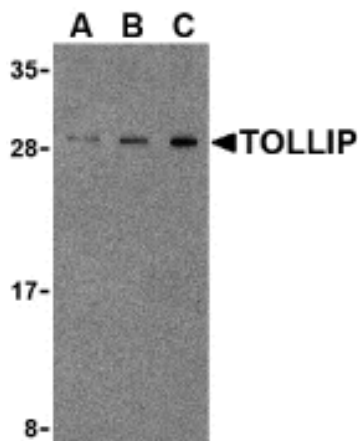
ACCESSION NUMBER

Human Q9H0E2

IMMUNOGEN

Rabbit polyclonal TOLLIP antibody was raised against a 16 amino acid peptide from near the center of human TOLLIP.

Western blot analysis of TOLLIP in rat brain cell lysate with TOLLIP antibody at (A) 0.5, (B) 1 and (C) 2µg/ml.



POSITIVE CONTROL/TISSUE EXPRESSION

Positive Control-Rat Brain Lysate

Located in the cytoplasm and phosphorylated by IRAK1 upon stimulation by IL-1 or microbial products.⁵

COMMENTS

TOLLIP antibody can be used for the detection of TOLLIP by Western blot at 1 μg/ml.

PURIFICATION

Antigen Immunoaffinity Purification

SHIP CONDITIONS

Ship at ambient temperature, freeze upon arrival

STORAGE CUSTOMER

Product should be stored at -20°C. Aliquot to avoid freeze/thaw cycles

STABILITY

Products are stable for one year from purchase when stored properly

REFERENCES

- 1) Takeda K, Kaisho T, and Akira S. Toll-like receptors. *Annu. Rev. Immunol.* 2003; 21:335-76.
- 2) Janeway CA Jr. and Medzhitov R. Innate immune recognition. *Annu. Rev. Immunol.* 2002; 20:197-216.
- 3) McGettrick AF and O'Neill LAJ. The expanding family of MyD88-like adaptors in Toll-like receptor signal transduction. *Mol. Imm.* 2004; 41:577-82.
- 4) Zhang G and Ghosh S. Negative regulation of Toll-like receptor-mediated signaling by Tollip. *J. Biol. Chem.* 2002; 277:7059-65.
5. UniProtKB/Swiss-Prot entry Q9H0E2. <http://cn.expasy.org/uniprot/Q9H0E2>, Accessed on February 28, 2007.

PRODUCT SPECIFIC REFERENCES