



# SZABO SCANDIC

Part of Europa Biosite

## Produktinformation



Forschungsprodukte & Biochemikalien



Zellkultur & Verbrauchsmaterial



Diagnostik & molekulare Diagnostik



Laborgeräte & Service

Weitere Information auf den folgenden Seiten!  
See the following pages for more information!



### Lieferung & Zahlungsart

siehe unsere [Liefer- und Versandbedingungen](#)

### Zuschläge

- Mindermengenzuschlag
- Trockeneiszuschlag
- Gefahrgutzuschlag
- Expressversand

### SZABO-SCANDIC HandelsgmbH

Quellenstraße 110, A-1100 Wien

T. +43(0)1 489 3961-0

F. +43(0)1 489 3961-7

[mail@szabo-scandic.com](mailto:mail@szabo-scandic.com)

[www.szabo-scandic.com](http://www.szabo-scandic.com)

[linkedin.com/company/szaboscandic](https://www.linkedin.com/company/szaboscandic) 

**UEV1A. Rabbit Polyclonal Antibody**

**BACKGROUND**

Ubiquitin-conjugating enzyme E2 (UEV1) was initially discovered as a protein similar in sequence and structure to the E2 ubiquitin-conjugating enzymes but lacking their enzymatic activity (1). There are at least two variants and multiple isoforms of UEV1. In particular, UEV1A (Ubiquitin-conjugating enzyme E2 variant 1 isoform A) has recently been shown to be an important component of the Toll-like receptor and IL-1R signaling pathway (reviewed in 2). Signals from these pathways are relayed by a number of downstream molecules such as MyD88 and tumor necrosis factor receptor associated factor (TRAF6), ultimately activating various kinases and transcription factors (2,3). UEV1A is part of a dimeric ubiquitin-conjugating enzyme complex also containing Ubc13 (ubiquitin-conjugating enzyme 13) that together with TRAF6 activates TAK1, a member of the mitogen-activated protein kinase kinase kinase family (4-6). The Ubc13-UEV1A complex also mediates the Lys-63 ubiquitination of TRAF-6, and this ubiquitination is essential for TAK1 activation (5).

**ORDERING INFORMATION**

**CATALOG NUMBER**  
X1829P

**SIZE**

100 µg

**FORM**

Unconjugated

**HOST/CLONE**

Rabbit

**FORMULATION**

Provided as solution in phosphate buffered saline with 0.02% sodium azide

**CONCENTRATION**

See vial for concentration

**ISOTYPE**

IgG

**APPLICATIONS**

Western Blot

**SPECIES REACTIVITY**

Human, Mouse, Rat

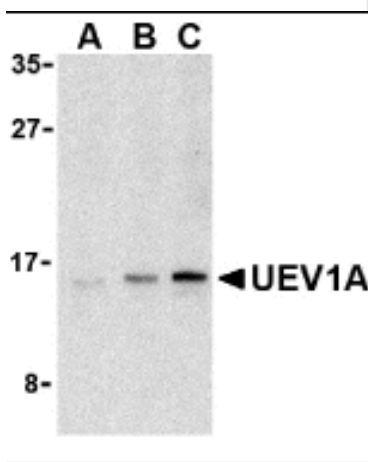
**ACCESSION NUMBER**

Human Q13404-2

**IMMUNOGEN**

Rabbit polyclonal UEV1A antibody was raised against a peptide corresponding to 15 amino acids near the C-terminus of human UEV1A.

Western blot analysis of UEV1A in Jurkat cell lysates with UEV1A antibody at (A) 1, (B) 2, and (C) 4 µg/ml



**POSITIVE CONTROL/TISSUE EXPRESSION**

Postive Control: Jurkat Cell Lysate.

UE1A is one of seven named isoforms of UEV1. UEV1A is located in the nucleus, while iosforms 3 and 5 are found in the membrane<sup>7</sup>

**COMMENTS**

UEV1A antibody can be used for detection of UEV1A by Western blot at 1 to 2 ug/ml. Anti-UEV1A may also recognize other isoforms of UEV1A.

**PURIFICATION**

Antigen Immunoaffiinity Purification

**SHIP CONDITIONS**

Ship at ambient temperature, freeze upon arrival

**STORAGE CUSTOMER**

Product should be stored at -20°C. Aliquot to avoid freeze/thaw cycles

**STABILITY**

Products are stable for one year from purchase when stored properly

**REFERENCES**

- 1) Sancho E, Vila MR, Sanchez-Pulido L, et al. Role of UEV-1, an inactive variant of the E2 ubiquitin-conjugating enzymes, in in vitro differentiation and cell cycle behavior of HT-29-M6 intestinal mucosecretory cells. *Mol. Cell Biol.* 1998; 18:576-89.
- 2) Akira S and Takeda K. Toll-like receptor Signalling. *Nat. Rev. Immunol.* 2004; 4:499-511
- 3) Vogel SN, Fitzgerald KA, and Fenton MJ. TLRs: differential adapter utilization by toll-like receptors mediates TLR-specific patterns of gene expression. *Mol. Interv.* 2003; 3:466-77
- 4) Deng L, Wang C, Spencer E, et al. Activation of the I&#954;B kinase complex by TRAF6 requires a dimeric ubiquitin-conjugating enzyme complex and a unique polyubiquitin chain. *Cell* 2000; 103:351-61.
- 5) Wang C, Deng L, Hong M, et al. TAK1 is a ubiquitindependent kinase of MKK and IKK. *Nature* 2001; 412:346-51.
- 6) Yamaguchi K, Shirakabe K, Shibuya H, et al. Identification of a member of the MAPKKK family as a potential mediator of TGF- $\beta$  signal transduction. *Science* 1995; 270:2008-11.
- 7) Alternative product of entry: Q13404, <http://www.expasy.org/uniprot/Q13404-2>, Accessed Febraury 27, 2007

**PRODUCT SPECIFIC REFERENCES**