



# SZABO SCANDIC

Part of Europa Biosite

## Produktinformation



Forschungsprodukte & Biochemikalien



Zellkultur & Verbrauchsmaterial



Diagnostik & molekulare Diagnostik



Laborgeräte & Service

Weitere Information auf den folgenden Seiten!  
See the following pages for more information!



### Lieferung & Zahlungsart

siehe unsere [Liefer- und Versandbedingungen](#)

### Zuschläge

- Mindermengenzuschlag
- Trockeneiszuschlag
- Gefahrgutzuschlag
- Expressversand

### SZABO-SCANDIC HandelsgmbH

Quellenstraße 110, A-1100 Wien

T. +43(0)1 489 3961-0

F. +43(0)1 489 3961-7

[mail@szabo-scandic.com](mailto:mail@szabo-scandic.com)

[www.szabo-scandic.com](http://www.szabo-scandic.com)

[linkedin.com/company/szaboscandic](https://www.linkedin.com/company/szaboscandic) 

Sphingosine Kinase 1, Long Form, Rat Reactive. Rabbit Antigen Immunoaffinity Purified Polyclonal

**BACKGROUND**

Rat sphingosine kinase 1 catalyzes the phosphorylation of sphingosine to form sphingosine 1-phosphate (spp)(sphingosine + ATP = sphingosine 1-phosphate + ADP), a lipid mediator with both intra- and extracellular functions. also acts on d-erythro-sphingosine and to a lesser extent sphinganine, but not other lipids, such as d,l-threo-dihydrosphingosine, n, n-dimethylsphingosine, diacylglycerol, ceramide, or phosphatidylinositol. The long form of sphingosine kinase 1, an N-terminal extension, is responsible for FcεRI-mediated calcium mobilization and may play a role in other ligand mediated signaling events.

**ORDERING INFORMATION**

**CATALOG NUMBER**  
X1848P

**SIZE**  
10 Miniblots

**FORM**  
Unconjugated

**HOST/CLONE**  
Rabbit

**FORMULATION**  
Provided as ligand affinity purified antibody in phosphate buffered saline with 0.08% sodium azide

**CONCENTRATION**  
Lot specific, see vial

**ISOTYPE**  
N/A

**APPLICATIONS**  
Western Blot

**SPECIES REACTIVITY**  
Rat

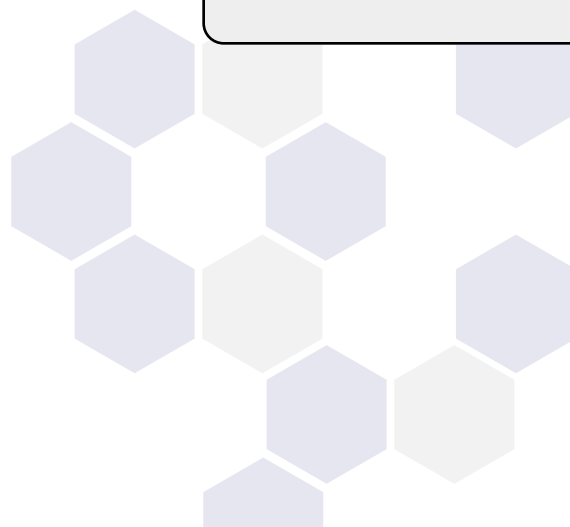
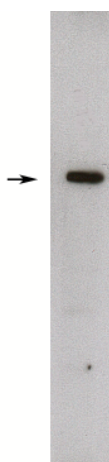
**ACCESSION NUMBER**

Rat	NM_133386
Rat	Q1HGK5
Human	Q9NYA1

**IMMUNOGEN**

Synthetic peptide derived from the rat sphingosine kinase 1, long form, protein.

Western blot of rat kidney lysate (10 ug/lane), detection of endogenous Sphingosine kinase 1, long form using X1848P (1 ug/ml), HRP anti-rabbit was used at 1:75k, and developed with Pierce's Super Signal West Femto.



**POSITIVE CONTROL/TISSUE EXPRESSION**

Antibody has been tested on rat kidney lysate.

**COMMENTS**

Antibody can be used for Western blotting (1-5 µg/ml). Optimal concentration should be evaluated by serial dilutions.

**PURIFICATION**

Antigen Immunoaffinity Purification

**SHIP CONDITIONS**

Ship on dry ice, freeze upon arrival

**STORAGE CUSTOMER**

Product should be stored at -70°C. Aliquot to avoid freeze/thaw cycles

**STABILITY**

Products are stable for one year from purchase when stored properly

**REFERENCES**

1. Kihara A, Ikeda M, Kariya Y, Lee EY, Lee YM, Igarashi Y, Sphingosine-1-phosphate lyase is involved in the differentiation of F9 embryonal carcinoma cells to primitive endoderm. *J. Biol. Chem.* 278 (2003) 14578-14585
2. Choi OH, Kim JH, Kinet JP, Calcium mobilization via sphingosine kinase in signalling by the FcεRI antigen receptor. *Nature* 380 (1996) 634-636
3. Olivera A, Kohama T, Edsall L, Nava V, Cuvillier O, Poulton S, Spiegel S, Sphingosine kinase expression increases intracellular sphingosine-1-phosphate and promotes cell growth and survival. *J. Cell Biol.* 147 (1999) 545-558
4. Chun J, Goetzl EJ, Hla T, Igarashi Y, Lynch KR, Moolenaar W, Pyne S, Tigyi G, International union of pharmacology. XXXIV. Lysophospholipid receptor nomenclature. *Pharmacol. Rev.* 54 (2002) 265-269
5. Hla T, Signaling and biological actions of sphingosine 1-phosphate. *Pharmacol. Res.* 47 (2003) 401-407
6. Gregorius K, Mouritsen S, Elsner HI, Hydrocoating: a new method for coupling biomolecules to solid phases. *J. Immunol. Methods*, 181 (1995) 65-73
7. Zhang JH, Chung TDY, Oldenburg KR, A simple statistical parameter for use in evaluation and validation of high throughput screening assays. *J. Biomol. Screening*, 4 (1999) 67-73
8. Ohotski, J., et al. Expression of sphingosine 1-phosphate receptor 4 and sphingosine kinase 1 is associated with outcome in oestrogen receptor-negative breast cancer. *Br. J. Can.* (2012), 106, 1453-1459

**PRODUCT SPECIFIC REFERENCES**