



SZABO SCANDIC

Part of Europa Biosite

Produktinformation



Forschungsprodukte & Biochemikalien



Zellkultur & Verbrauchsmaterial



Diagnostik & molekulare Diagnostik



Laborgeräte & Service

Weitere Information auf den folgenden Seiten!
See the following pages for more information!



Lieferung & Zahlungsart

siehe unsere [Liefer- und Versandbedingungen](#)

Zuschläge

- Mindermengenzuschlag
- Trockeneiszuschlag
- Gefahrgutzuschlag
- Expressversand

SZABO-SCANDIC HandelsgmbH

Quellenstraße 110, A-1100 Wien

T. +43(0)1 489 3961-0

F. +43(0)1 489 3961-7

mail@szabo-scandic.com

www.szabo-scandic.com

[linkedin.com/company/szaboscandic](https://www.linkedin.com/company/szaboscandic) 



phospho-Sphingosine Kinase 1, (pS225), Mouse Reactive. Rabbit Antigen Immunoaffinity Purified Polyclonal

BACKGROUND

Activation of Sphingosine kinase (Sphk) increases the bioactive lipid, sphingosine 1-phosphate (S1P) and has been observed in a variety of cancer cells. Phosphorylation of sphingosine by sphingosine kinase (Sphk) is the rate-limiting step in the cellular synthesis of S1P. A principle activation event is the phosphorylation of serine 225 of sphingosine kinase 1. Inhibition of Sphk1 phosphorylation and hence, Sphk activity is an important target for the development of drugs for cancer, inflammation, cardioprotection as well as a many other indications.

ORDERING INFORMATION

CATALOG NUMBER
X1849P

SIZE
10 Miniblots

FORM
Affinity Purified

HOST/CLONE
Rabbit

FORMULATION
Provided as solution in phosphate buffered saline with 0.08% sodium azide

CONCENTRATION
Lot Specific

ISOTYPE
IgG

APPLICATIONS
Western Blot

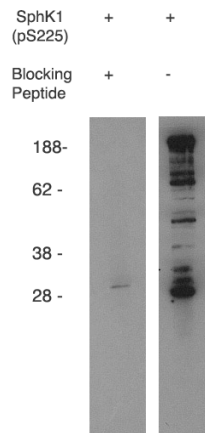
SPECIES REACTIVITY
Mouse

ACCESSION NUMBER
Mouse Q8CI15

IMMUNOGEN

A synthetic peptide incorporating the serine 225 phosphorylation site of mouse sphingosine kinase 1

Western blot using anti-mouse SphK1 (pS225) (Cat. No. X1849P) on mouse B-cell lysate. Antibody used at 1 μ g/ml with phosphorylated blocking peptide (Cat. No. X1877B) (lane A) and without (lane B).



POSITIVE CONTROL/TISSUE EXPRESSION

COMMENTS

Antibody can be used for Western blotting (1-5 μ g/ml). Antibody shows some cross reactivity (~10% by ELISA) with other phosphoserine containing proteins. Optimal concentration should be evaluated by serial dilutions.

PURIFICATION

Antigen Immunoaffinity Purification

SHIP CONDITIONS

Ship on gel ice, store at -20°C immediately upon arrival

STORAGE CUSTOMER

Product should be stored at -20°C. Aliquot to avoid freeze/thaw cycles

STABILITY

Products are stable for one year from purchase when stored properly

REFERENCES

1. Kihara A, Ikeda M, Kariya Y, Lee EY, Lee YM, Igarashi Y, Sphingosine-1-phosphate lyase is involved in the differentiation of F9 embryonal carcinoma cells to primitive endoderm. *J. Biol. Chem.* 278 (2003) 14578-14585
2. Choi OH, Kim JH, Kinet JP, Calcium mobilization via sphingosine kinase in signalling by the Fc ϵ R1 antigen receptor. *Nature* 380 (1996) 634-636
3. Olivera A, Kohama T, Edsall L, Nava V, Cuvillier O, Poulton S, Spiegel S, Sphingosine kinase expression increases intracellular sphingosine-1-phosphate and promotes cell growth and survival. *J. Cell Biol.* 147 (1999) 545-558
4. Chun J, Goetzl EJ, Hla T, Igarashi Y, Lynch KR, Moolenaar W, Pyne S, Tigyi G, International union of pharmacology. XXXIV. Lysophospholipid receptor nomenclature. *Pharmacol. Rev.* 54 (2002) 265-269
5. Hla T, Signaling and biological actions of sphingosine 1-phosphate. *Pharmacol. Res.* 47 (2003) 401-407
6. Gregorius K, Mouritsen S, Elsner HI, Hydrocoating: a new method for coupling biomolecules to solid phases. *J. Immunol. Methods*, 181 (1995) 65-73
7. Zhang JH, Chung TDY, Oldenburg KR, A simple statistical parameter for use in evaluation and validation of high throughput screening assays. *J. Biomol. Screening*, 4 (1999) 67-73
8. Ohotski, J., et al. Expression of sphingosine 1-phosphate receptor 4 and sphingosine kinase 1 is associated with outcome in oestrogen receptor-negative breast cancer. *Br. J. Can.* (2012), 106, 1453-1459

PRODUCT SPECIFIC REFERENCES