



SZABO SCANDIC

Part of Europa Biosite

Produktinformation



Forschungsprodukte & Biochemikalien



Zellkultur & Verbrauchsmaterial



Diagnostik & molekulare Diagnostik



Laborgeräte & Service

Weitere Information auf den folgenden Seiten!
See the following pages for more information!



Lieferung & Zahlungsart

siehe unsere [Liefer- und Versandbedingungen](#)

Zuschläge

- Mindermengenzuschlag
- Trockeneiszuschlag
- Gefahrgutzuschlag
- Expressversand

SZABO-SCANDIC HandelsgmbH

Quellenstraße 110, A-1100 Wien

T. +43(0)1 489 3961-0

F. +43(0)1 489 3961-7

mail@szabo-scandic.com

www.szabo-scandic.com

[linkedin.com/company/szaboscandic](https://www.linkedin.com/company/szaboscandic) 

Notum. Rabbit Polyclonal Antibody
Pectinacetylerase homolog, Wingful (Wf)

BACKGROUND

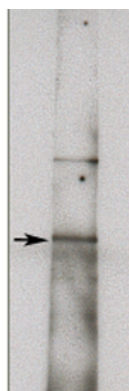
Genetic studies in *Drosophila* have revealed a novel secreted antagonist for Wingless (Wg) signaling, referred to as Notum/Wingful (Wf). Wf/Notum encodes a protein of 430 amino acid residues, which is related to plant pectin acetylsterases of the α/β -hydrolase superfamily. The main target of Notum action appears to be cell surface proteoglycans Dally and/or Dally-like (Dlp). Notum governs the extracellular Wg morphogen distribution via Dally and Dlp. Also, like some vertebrate Wnt antagonists, notum expression is activated by Wg signaling, revealing the existence of a feedback control mechanism in which Wg modifies its own gradient distribution. In vertebrate, proteoglycans related to Dally and Dlp likely play important roles in Wnt signaling which encodes a glypican that is required for Wnt-11 signaling. A single ortholog of Notum exists in the mouse and the human genome, implying that a similar regulatory mechanism may exist in vertebrates.

IMMUNOGEN

Recombinant full-length notum protein from mouse.

Western blot of HepG2 cell lysate (11 μ g/lane) using X1856P (10 μ g/ml). Blots were developed with anti Rabbit HRP (Cat no. X1207M) 1:100k and using Pierce Super Signal West Femto (Cat. no. P1856189).

98 kDa-
62 kDa-



ORDERING INFORMATION

CATALOG NUMBER
X1856P

SIZE
100 μ g
FORM
Unconjugated

HOST/CLONE
Rabbit

FORMULATION
Provided as solution in phosphate buffered saline with 0.08% sodium azide

CONCENTRATION
See vial for concentration

ISOTYPE
IgG

APPLICATIONS
Western Blot, Immunohistochemistry

SPECIES REACTIVITY
Human, Mouse

ACCESSION NUMBER

Mouse Q8R116
Human Q6P988

POSITIVE CONTROL/TISSUE EXPRESSION

HepG2 cell lysate

COMMENTS

Antibody can be used for Western blotting (5-10 μ g/ml). Optimal concentration should be evaluated by serial dilutions.

PURIFICATION

Ammonium Sulfate Precipitation

SHIP CONDITIONS

Ship at ambient temperature, freeze upon arrival

STORAGE CUSTOMER

Product should be stored at -20°C. Aliquot to avoid freeze/thaw cycles

STABILITY

Products are stable for one year from purchase when stored properly

REFERENCES

1. Kozmik, Z., et al. 'Characterization of mammalian orthologues of the *Drosophila* *osa* gene: cDNA cloning, expression, chromosomal localization, and direct physical interaction with Brahma chromatin-remodeling complex.' *Genomics*, 2001, 73, 140-148
2. Riese, J., et al. 'LEF-1, a nuclear factor coordinating signaling inputs from wingless and decapentaplegic.' *Cell*, 1997, 88, 777-787
3. Giraldez, A.J., et al. 'HSPG modification by the secreted enzyme Notum shapes the Wingless morphogen gradient.' *Dev. Cell*, 2002, 2, 667-676

PRODUCT SPECIFIC REFERENCES