



# SZABO SCANDIC

Part of Europa Biosite

## Produktinformation



Forschungsprodukte & Biochemikalien



Zellkultur & Verbrauchsmaterial



Diagnostik & molekulare Diagnostik



Laborgeräte & Service

Weitere Information auf den folgenden Seiten!  
See the following pages for more information!



### Lieferung & Zahlungsart

siehe unsere [Liefer- und Versandbedingungen](#)

### Zuschläge

- Mindermengenzuschlag
- Trockeneiszuschlag
- Gefahrgutzuschlag
- Expressversand

### SZABO-SCANDIC HandelsgmbH

Quellenstraße 110, A-1100 Wien

T. +43(0)1 489 3961-0

F. +43(0)1 489 3961-7

[mail@szabo-scandic.com](mailto:mail@szabo-scandic.com)

[www.szabo-scandic.com](http://www.szabo-scandic.com)

[linkedin.com/company/szaboscandic](https://www.linkedin.com/company/szaboscandic) 

**Sulf2. Rabbit Polyclonal Antibody**  
Extracellular Sulfatase-2

**BACKGROUND**

Sulf-2 exhibits arylsulfatase activity and highly specific endoglucosamine-6-sulfatase activity. It can remove sulfate from the C-6 position of glucosamine within specific subregions of intact heparin. Mammalian Sulfs are endoproteolytically processed and secreted into the extracellular space of transfected cells, where they exhibit both arylsulfatase activity and highly specific endoglucosamine-6-sulfatase activity against intact heparin. Though the molecular weight of full length human Sulf2 is 100455 Da (870 amino acids), the endogenous Sulf2 is found by western blot to be present at molecular weights of 24.4, 33.7 and 51-60 kDa. Higher molecular weight species may be found depending on tissue and/or cell type.

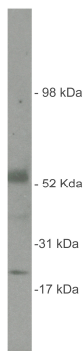
Analysis of human tumor tissue and tumor cell lines suggests that HSulf-1 is misregulated in cancers. HSulf-1 is found in a variety of normal tissues but is down-regulated in tumor cell lines originating from ovarian, breast, pancreatic, renal, and hepatocellular carcinoma.

Tumors formed by cells expressing Sulf demonstrate enhanced extracellular matrix deposition. The 6-O-sulfation of heparan sulfate of myeloma tumor cells may be a critical factor in determining and regulating the in vivo growth of this cancer.

**IMMUNOGEN**

Synthetic peptide derived from the human Sulf2 protein.

Western blot using Exalpa's antigen immunoaffinity purified anti-human Sulf2 antibody (0.15 ug/ml) on human brain lysate (20 ug/lane) and developed using goat anti rabbit HRP (1:30,000)Pierce's Super Signal West Femto.



**ORDERING INFORMATION**

**CATALOG NUMBER**  
X1858P

**SIZE**  
100 µg  
**FORM**  
Unconjugated

**HOST/CLONE**  
Rabbit

**FORMULATION**  
Provided as solution in phosphate buffered saline with 0.08% sodium azide

**CONCENTRATION**  
See vial for concentration

**ISOTYPE**  
IgG

**APPLICATIONS**  
Western Blot

**SPECIES REACTIVITY**  
Human

**ACCESSION NUMBER**  
Human Q8IWU5

**POSITIVE CONTROL/TISSUE EXPRESSION**

Antibody tested on human brain lysate

**COMMENTS**

Antibody can be used for Western blotting (0.05-0.1  $\mu\text{g/ml}$ ). Optimal concentration should be evaluated by serial dilutions.

**PURIFICATION**

Ammonium Sulfate Precipitation

**SHIP CONDITIONS**

Ship at ambient temperature, freeze upon arrival

**STORAGE CUSTOMER**

Product should be stored at  $-20^{\circ}\text{C}$ . Aliquot to avoid freeze/thaw cycles

**STABILITY**

Products are stable for one year from purchase when stored properly

**REFERENCES**

1. Lum, D.H., et al. 'Gene trap disruption of the mouse heparan sulfate 6-O-endosulfatase gene, Sulf2.' Mol. Cell. Biol. 2007, 27, 678-688

**PRODUCT SPECIFIC REFERENCES**