



SZABO SCANDIC

Part of Europa Biosite

Produktinformation



Forschungsprodukte & Biochemikalien



Zellkultur & Verbrauchsmaterial



Diagnostik & molekulare Diagnostik



Laborgeräte & Service

Weitere Information auf den folgenden Seiten!
See the following pages for more information!



Lieferung & Zahlungsart

siehe unsere [Liefer- und Versandbedingungen](#)

Zuschläge

- Mindermengenzuschlag
- Trockeneiszuschlag
- Gefahrgutzuschlag
- Expressversand

SZABO-SCANDIC HandelsgmbH

Quellenstraße 110, A-1100 Wien

T. +43(0)1 489 3961-0

F. +43(0)1 489 3961-7

mail@szabo-scandic.com

www.szabo-scandic.com

[linkedin.com/company/szaboscandic](https://www.linkedin.com/company/szaboscandic) 



Sulf2. Rabbit Antigen Immunoaffinity Purified Polyclonal
Extracellular Sulfatase-2

BACKGROUND

Sulf-2 exhibits arylsulfatase activity and highly specific endoglucosamine-6-sulfatase activity. It can remove sulfate from the C-6 position of glucosamine within specific subregions of intact heparin. Mammalian Sulfs are endoproteolytically processed and secreted into the extracellular space of transfected cells, where they exhibit both arylsulfatase activity and highly specific endoglucosamine-6-sulfatase activity against intact heparin. Though the molecular weight of full length human Sulf2 is 100455 Da (870 amino acids), the endogenous Sulf2 is found by western blot to be present at molecular weights of 24.4, 33.7 and 51-60 kDa. Higher molecular weight species may be found depending on tissue and/or cell type.

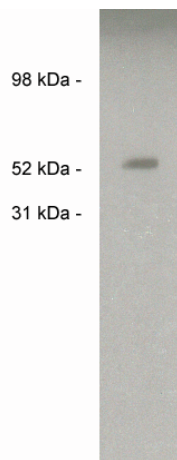
Analysis of human tumor tissue and tumor cell lines suggests that HSulf-1 is misregulated in cancers. HSulf-1 is found in a variety of normal tissues but is down-regulated in tumor cell lines originating from ovarian, breast, pancreatic, renal, and hepatocellular carcinoma.

Tumors formed by cells expressing Sulf demonstrate enhanced extracellular matrix deposition. The 6-O-sulfation of heparan sulfate of myeloma tumor cells may be a critical factor in determining and regulating the in vivo growth of this cancer.

IMMUNOGEN

Synthetic peptide derived from the human Sulf2 protein.

Western blot of endogenous Sulf2 in human brain lysate (10 ug/lane) using X1858P (0.05 ug/ml). Developed with anti-rabbit HRP (1:5k) and Pierce's Super Signal West Femto.



ORDERING INFORMATION

CATALOG NUMBER
X1865P

SIZE

50 µg

FORM

Affinity Purified

HOST/CLONE

Rabbit

FORMULATION

Provided as ligand affinity purified antibody in phosphate buffered saline with 0.08% sodium azide

CONCENTRATION

Lot specific, see vial for details

ISOTYPE

IgG

APPLICATIONS

Western Blot

SPECIES REACTIVITY

Human

ACCESSION NUMBER

Human Q8IWU5

POSITIVE CONTROL/TISSUE EXPRESSION

Antibody tested on human brain lysate

COMMENTS

Antibody can be used for Western blotting (0.05-0.1 $\mu\text{g/ml}$). Optimal concentration should be evaluated by serial dilutions.

PURIFICATION

Antigen Immunoaffinity Purification

SHIP CONDITIONS

Ship on dry ice, freeze upon arrival

STORAGE CUSTOMER

Product should be stored at -70°C . Aliquot to avoid freeze/thaw cycles

STABILITY

Products are stable for one year from purchase when stored properly

REFERENCES

1. Lum, D.H., et al. 'Gene trap disruption of the mouse heparan sulfate 6-O-endosulfatase gene, Sulf2.' Mol. Cell. Biol. 2007, 27, 678-688

PRODUCT SPECIFIC REFERENCES