



# SZABO SCANDIC

Part of Europa Biosite

## Produktinformation



Forschungsprodukte & Biochemikalien



Zellkultur & Verbrauchsmaterial



Diagnostik & molekulare Diagnostik



Laborgeräte & Service

Weitere Information auf den folgenden Seiten!  
See the following pages for more information!



### Lieferung & Zahlungsart

siehe unsere [Liefer- und Versandbedingungen](#)

### Zuschläge

- Mindermengenzuschlag
- Trockeneiszuschlag
- Gefahrgutzuschlag
- Expressversand

### SZABO-SCANDIC HandelsgmbH

Quellenstraße 110, A-1100 Wien

T. +43(0)1 489 3961-0

F. +43(0)1 489 3961-7

[mail@szabo-scandic.com](mailto:mail@szabo-scandic.com)

[www.szabo-scandic.com](http://www.szabo-scandic.com)

[linkedin.com/company/szaboscandic](https://www.linkedin.com/company/szaboscandic) 

Sphingosine Kinase 1, Long Form, Rat. Rabbit Polyclonal Antibody

**BACKGROUND**

Rat sphingosine kinase 1 catalyzes the phosphorylation of sphingosine to form sphingosine 1-phosphate (spp)(sphingosine + ATP = sphingosine 1-phosphate + ADP), a lipid mediator with both intra- and extracellular functions. also acts on d-erythro-sphingosine and to a lesser extent sphinganine, but not other lipids, such as d,l-threo-dihydrosphingosine, n, n-dimethylsphingosine, diacylglycerol, ceramide, or phosphatidylinositol. The long form of sphingosine kinase 1, an N-terminal extension, is responsible for FcεRI-mediated calcium mobilization and may play a role in other ligand mediated signaling events.

**ORDERING INFORMATION**

**CATALOG NUMBER**  
X2038P

**SIZE**

100 µg

**FORM**

Unconjugated

**HOST/CLONE**

Rabbit

**FORMULATION**

Provided as solution in phosphate buffered saline with 0.08% sodium azide

**CONCENTRATION**

See vial for concentration

**ISOTYPE**

IgG

**APPLICATIONS**

Western Blot

**SPECIES REACTIVITY**

Rat

**ACCESSION NUMBER**

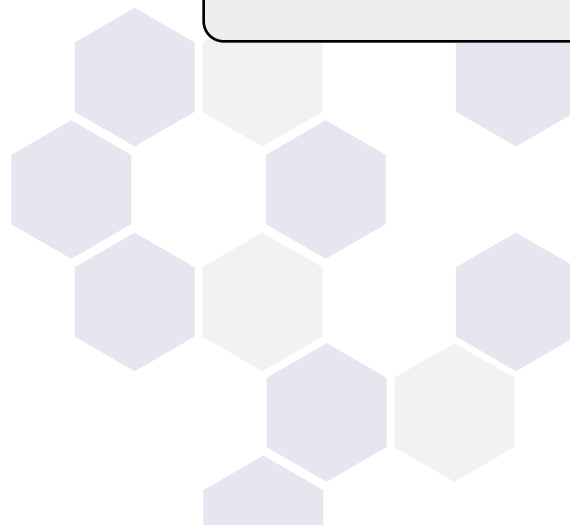
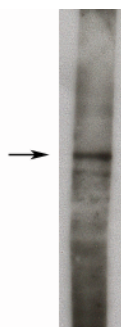
Rat NM\_133386

Rat Q1HGK5

**IMMUNOGEN**

Synthetic peptide derived from the rat sphingosine kinase 1, long form, protein.

Western blot of rat kidney lysate (10 µg/lane), detection of endogenous Sphingosine kinase 1, long form using X2038P (3 µg/ml), HRP anti-rabbit was used at 1:75k, and developed with Pierce's Super Signal West Femto.



**POSITIVE CONTROL/TISSUE EXPRESSION**

**COMMENTS**

Antibody suitable for Western blots (1-5  $\mu\text{g/ml}$ ). Optimal concentration should be evaluated by serial dilutions.

**PURIFICATION**

Ammonium Sulfate Precipitation

**SHIP CONDITIONS**

Ship at ambient temperature, freeze upon arrival

**STORAGE CUSTOMER**

Product should be stored at  $-20^{\circ}\text{C}$ . Aliquot to avoid freeze/thaw cycles

**STABILITY**

Products are stable for one year from purchase when stored properly

**REFERENCES**

1. Venkataraman, K., et al. 'Extracellular export of sphingosine kinase-1a contributes to the vascular S1P gradient.' *Biochem. J.*, 2006, 397, 461-471
2. Ohotski, J., et al. Expression of sphingosine 1-phosphate receptor 4 and sphingosine kinase 1 is associated with outcome in oestrogen receptor-negative breast cancer. *Br. J. Can.* (2012), 106, 1453-1459

**PRODUCT SPECIFIC REFERENCES**