



# SZABO SCANDIC

Part of Europa Biosite

## Produktinformation



Forschungsprodukte & Biochemikalien



Zellkultur & Verbrauchsmaterial



Diagnostik & molekulare Diagnostik



Laborgeräte & Service

Weitere Information auf den folgenden Seiten!  
See the following pages for more information!



### Lieferung & Zahlungsart

siehe unsere [Liefer- und Versandbedingungen](#)

### Zuschläge

- Mindermengenzuschlag
- Trockeneiszuschlag
- Gefahrgutzuschlag
- Expressversand

### SZABO-SCANDIC HandelsgmbH

Quellenstraße 110, A-1100 Wien

T. +43(0)1 489 3961-0

F. +43(0)1 489 3961-7

[mail@szabo-scandic.com](mailto:mail@szabo-scandic.com)

[www.szabo-scandic.com](http://www.szabo-scandic.com)

[linkedin.com/company/szaboscandic](https://www.linkedin.com/company/szaboscandic) 

**Cytochrome P450 2A6. Mouse Monoclonal Antibody**  
CYP2A6; CYP450 2A6 (EC 1.14.14.1), CYP1A6, Coumarin 7-hydroxylase

**BACKGROUND**

The cytochrome P450 proteins (CYPs) are monooxygenases that catalyze many reactions involved in drug metabolism and synthesis of cholesterol, steroids and other lipids. P450 enzymes are classified into subfamilies based on their sequence similarities. CYP2A6 is a liver enzyme that metabolizes a number of drugs and a variety of procarcinogens, though it is primarily responsible for the metabolism of nicotine, the major addictive agent in tobacco. CYP2A6 inactivates nicotine to cotinine, and then cotinine to 3-hydroxycotinine. Differences in CYP2A6 genotypes are related to nicotine dependence, and may influence smoking habits and withdrawal symptoms in individuals that are quitting smoking. This suggests that an individualized smoking cessation program may be designed based on CYP2A6 genotypes.

**ORDERING INFORMATION**

**CATALOG NUMBER**  
X2045M

**SIZE**

200 µg

**FORM**

Unconjugated

**HOST/CLONE**

Mouse Clone F16 P2 D8

**FORMULATION**

Provided as solution in phosphate buffered saline with 0.08% sodium azide

**CONCENTRATION**

See vial for concentration

**ISOTYPE**

IgG1

**APPLICATIONS**

ELISA, Immunohistochemistry, Western Blot

**SPECIES REACTIVITY**

Human

**ACCESSION NUMBER**

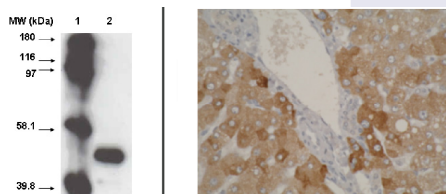
Human P05177

**IMMUNOGEN**

Hybridoma produced by the fusion of splenocytes from BALB/c mice immunized with Synthetic peptide conjugated to ovalbumin derived from the C-terminus of CYP2A6 and mouse myeloma Ag8563 cells. Antigen identical in CYP2A6, 2A7 and 2A13.

Left: Western blot using CYP2A6 antibody (Cat. No. X2045M) on recombinant cytochrome p450 at 1 µg/ml.

Right: Staining using CYP2A6 antibody on normal human liver tissue at 1 µg/ml.



**POSITIVE CONTROL/TISSUE EXPRESSION**

Normal human liver tissue.

**COMMENTS**

Antibody can be used for Western blotting (1-2  $\mu\text{g/ml}$ ), immunofluorescence and immunohistochemistry (formalin-fixed, paraffin-embedded tissues). ELISA titer to be determined by end-user. Optimal concentration should be evaluated by serial dilutions.

**PURIFICATION**

Protein A/G Chromatography

**SHIP CONDITIONS**

Ship at ambient temperature, freeze upon arrival

**STORAGE CUSTOMER**

Product should be stored at  $-20^{\circ}\text{C}$ . Aliquot to avoid freeze/thaw cycles

**STABILITY**

Products are stable for one year from purchase when stored properly

**REFERENCES**

1. Kumarakulasingham M, et al. (2005). Cytochrome p450 profile of colorectal cancer: identification of markers of prognosis. Clin Cancer Res. May 15;11(10):3758-65
2. Swan, G.E. (2005). Nicotine metabolism: the impact of CYP2A6 on estimate of additive genetic influence. Pharmacogenet. Genomics 15(2);115-125
3. Higashi, E., et al. (2007). Inhibitory effects of neurotransmitters and steroids on human CYP2A6. Drug Metab Dispos. 35(4); 508-514
4. Audrain-McGovern, J., et al. (2007). The role of CYP2A6 in the emergence of nicotine dependence in adolescents. 119(1);264-274

**PRODUCT SPECIFIC REFERENCES**